

LOC/DME I-OMO 111.55	APP CRS 095°	Rwy Idg 9000
Chan 52 (Y)		TDZE 1000
		Apt Elev 1026

ILS or LOC RWY 10

HARTSFIELD-JACKSON ATLANTA INTL (ATL)

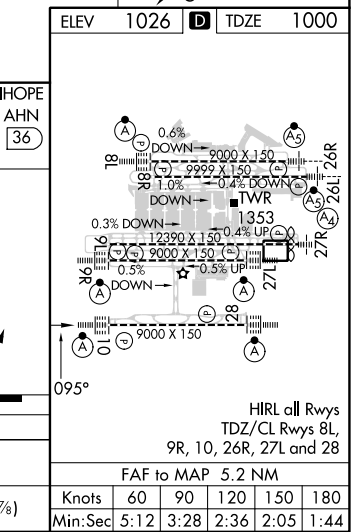
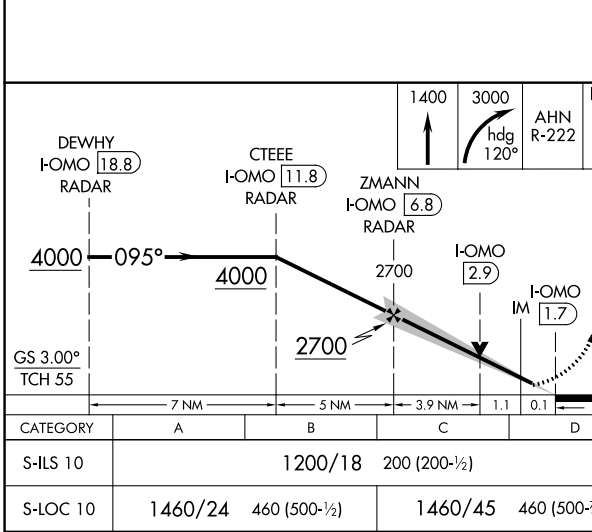
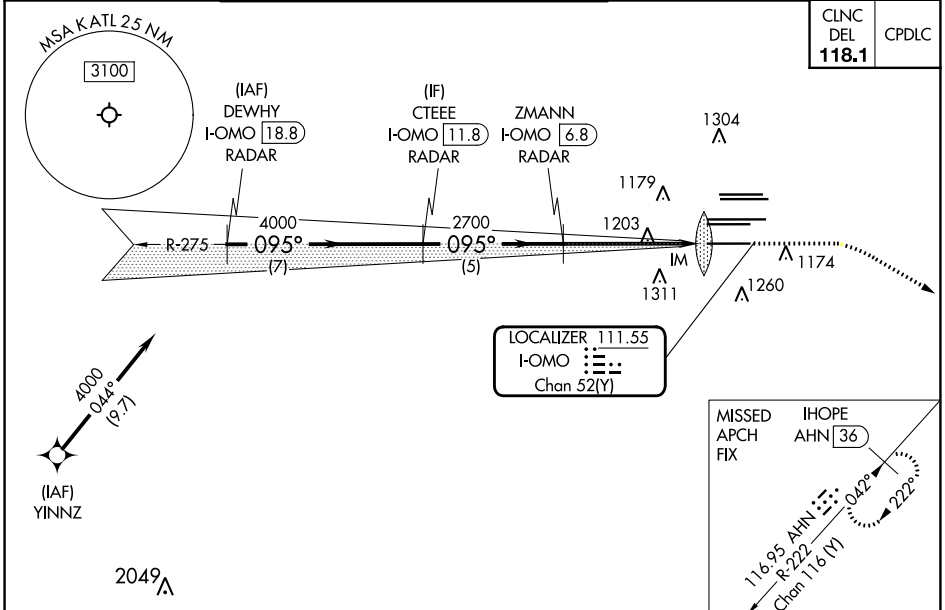
DME or RADAR required. RNP APCH - GPS from YINNZ.

Simultaneous approach authorized with Rwy 9L or 8R or 8L, or Rwy 9L and 8L. Localizer not suitable for electronic rollout guidance.

ALSF-2

MISSED APPROACH: Climb to 1400 then dimbing right turn to 3000 on heading 120° and AHN R-222 to IHOPE/AHN 36 DME and hold.

D-ATIS ARR 119.65	ATLANTA APP CON 127.9 379.9	ATLANTA TOWER 8L-26R 8R-26L 9L-27R 9R-27L 10-28 RWYs 119.1 125.325 123.85 119.3 119.5 254.4	ALL RWYs 121.9 121.75 121.65 254.4	GND CON 8L-26R,8R-26L 9L-27R,9R-27L 10-28 RWYs 121.9 121.75 121.65 254.4
-----------------------------	--	--	---	---



SE-4, 16 MAY 2024 to 13 JUN 2024

SE-4, 16 MAY 2024 to 13 JUN 2024