

ATLANTA, GEORGIA

AL-26 (FAA)

24137

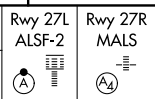
LOC/DME I-FSQ <b>108.5</b> Chan 22	APP CRS <b>275°</b>	Rwy ldg 27L <b>8865</b> 27R <b>11890</b> TDZE <b>999</b> <b>985</b> Apt Elev <b>1026</b> <b>1026</b>
--	------------------------	--

# ILS or LOC RWY 27L

## HARTSFIELD-JACKSON ATLANTA INTL (ATL)

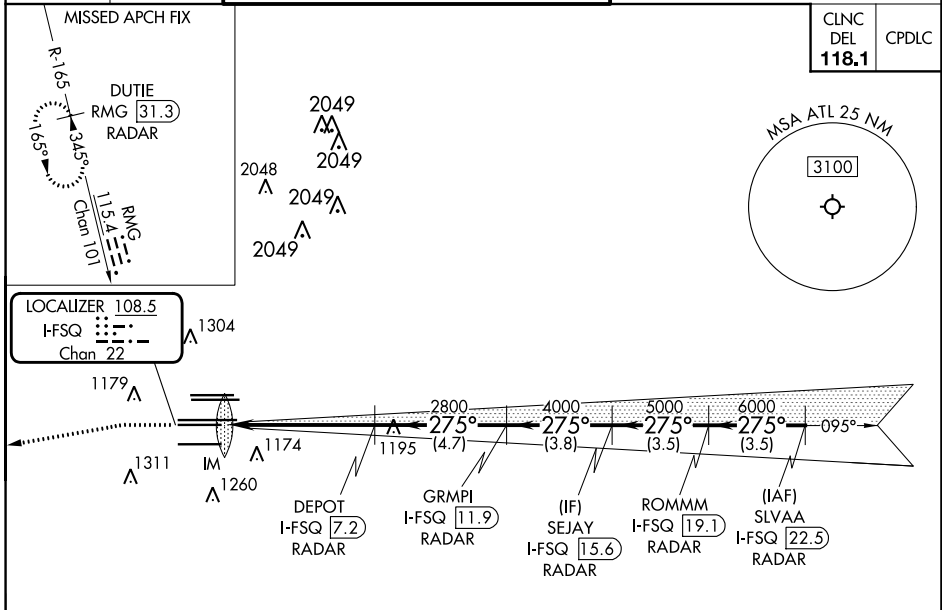
DME or RADAR required.  
RADAR required for procedure entry.

Simultaneous approach authorized.  
Inop table does not apply to Sidestep Rwy 27R.

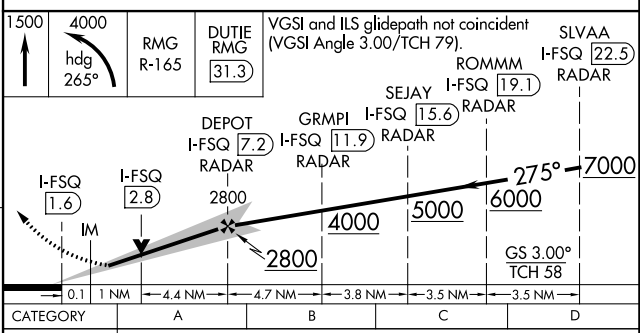
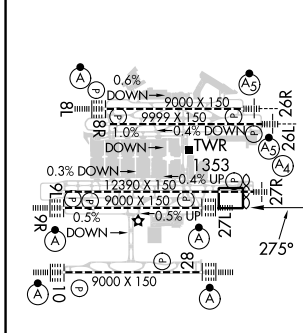


MISSED APPROACH: Climb to 1500 then climbing left turn to 4000 on heading 265° and RMDG VORTAC R-165 to DUTIE/RMG 31.3 DME/RADAR and hold.

D-ATIS ARR <b>119.65</b>	ATLANTA APP CON DEP <b>127.9</b> <b>379.9</b>	ATLANTA TOWER 8L-26R <b>119.1</b> 8R-26L <b>125.325</b> 9L-27R <b>123.85</b> 9R-27L <b>119.3</b> 10-28 RWYS <b>119.5</b> <b>254.4</b>	ALL RWYS <b>121.9</b>	GND CON <b>121.75</b>	ALL RWYS <b>121.65</b> <b>254.4</b>
-----------------------------	--	--	--------------------------	--------------------------	--



ELEV 1026	TDZE 27L 999	TDZE 27R 985
-----------	--------------	--------------



HIRL all Rwy	TDZ/CL Rwy 8L, 9R, 10, 26R, 27L and 28	FAF to MAP 5.5 NM		
Knots	60 90 120 150 180			
Min:Sec	5:30 3:40 2:45 2:12 1:50			
CATEGORY	A	B	C	D
S-ILS 27L	1199/18 200 (200-½)			
S-LOC 27L	1420/24	421 (400-½)	1420/40	421 (400-¾)
SIDESTEP 27R	1420-1½	435 (400-1½)	1420-2¼	435 (400-2¼)

ATLANTA, GEORGIA  
Amdt 19 22APR21

33°38'N-84°26'W

# HARTSFIELD-JACKSON ATLANTA INTL (ATL)

## ILS or LOC RWY 27L

SE-4, 16 MAY 2024 to 13 JUN 2024

SE-4, 16 MAY 2024 to 13 JUN 2024