

LOC/DME I-HFW 109.3 Chan 30	APP CRS 095°	Rwy Idg TDZE Apt Elev	8L 8800 1015 1026	8R 9999 1024 1026
---	------------------------	-----------------------------	---	---

ILS or LOC RWY 8L

HARTSFIELD-JACKSON ATLANTA INTL (ATL)

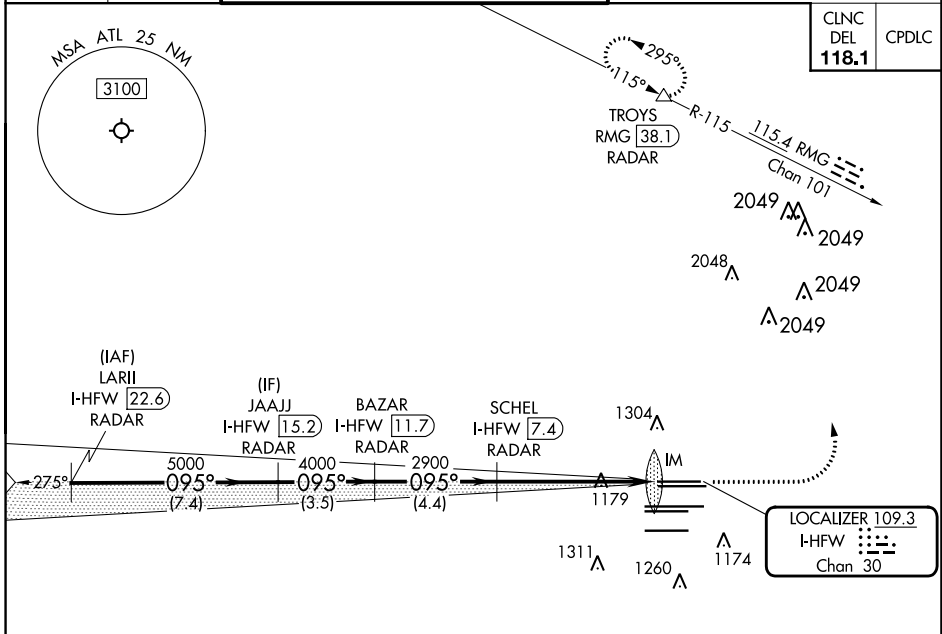
RADAR required for procedure entry. DME or RADAR required.
 Simultaneous approach authorized.
 Inop table does not apply to sidestep 8R.



MISSED APPROACH: Climb to 1500 then climbing left turn to 3500 on heading 360° and RMG VORTAC R-115 to TROYS/RMG 38.1 DME/RADAR and hold.

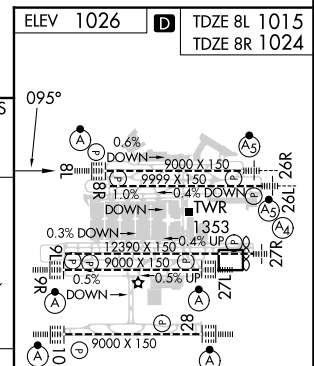
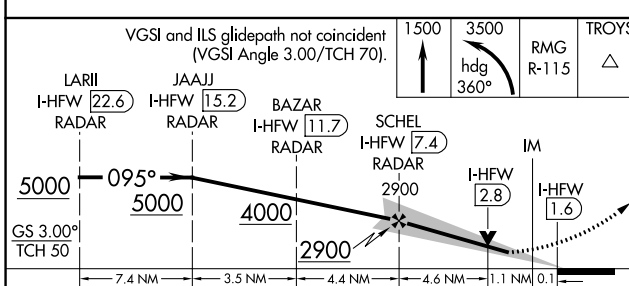
D-ATIS ARR 119.65	ATLANTA APP CON DEP 125.55 127.9 379.9	ATLANTA TOWER				ALL RWYS	GND CON	ALL RWYS
		8L-26R	8R-26L	9L-27R	9R-27L	10-28	(8L-26R, 8R-26L) (9L-27R, 9R-27L)	10-28
		119.1	125.325	123.85	119.3	119.5 254.4	121.9	121.75 121.65 254.4

CLNC DEL	CPDLC
118.1	



LOCALIZER 109.3 I-HFW Chan 30

ELEV 1026	TDZE 8L 1015	TDZE 8R 1024
------------------	---------------------	---------------------



CATEGORY	A	B	C	D
S-ILS 8L	1215/18		200 (200-½)	
S-LOC 8L	1460/24	445 (500-½)	1460/45	445 (500-¾)
SIDESTEP 8R	1460/55	436 (500-1)	1460-1½ 436 (500-1½)	1460-2 436 (500-2)

HRL all Rwys TDZ/CL Rwys 8L, 9R, 10, 26R, 27L and 28					
FAF to MAP 5.8 NM					
Knots	60	90	120	150	180
Min:Sec	5:48	3:52	2:54	2:19	1:56

SE-4, 16 MAY 2024 to 13 JUN 2024

SE-4, 16 MAY 2024 to 13 JUN 2024