

ATLANTA, GEORGIA

AL-26 (FAA)

24137

LOC/DME I-HZK <b>110.5</b> Chan <b>42</b>	APP CRS <b>095°</b>	Rwy Idg 9L <b>1170 9000</b> 9R <b>1019 1026</b> TDZE Apt Elev <b>1026 1026</b>
---	------------------------	--

# ILS or LOC RWY 9L

HARTSFIELD-JACKSON ATLANTA INTL (ATL)

RADAR required for procedure entry, DME.  
 Simultaneous approach authorized.  
 Rwy 9L helicopter visibility reduction below RVR 4000 NA.



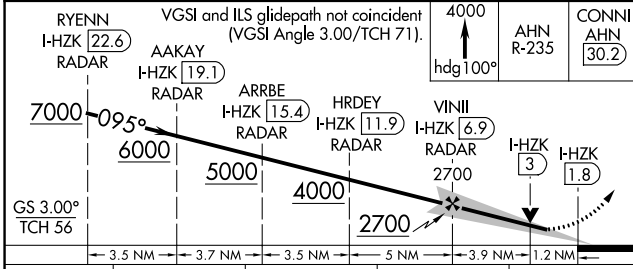
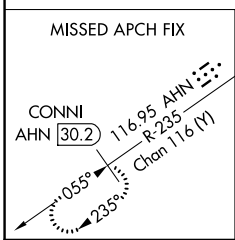
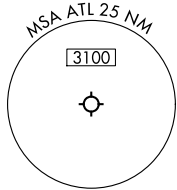
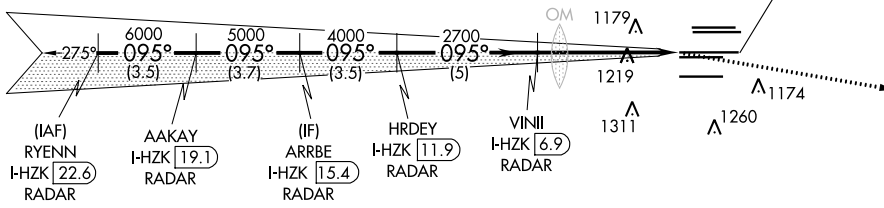
MISSED APPROACH: Climb to 4000 on heading 100° and AHN VOR/DME R-235 to CONNI/AHN 30.2 DME and hold.

D-ATIS ARR <b>119.65</b>	ATLANTA APP CON <b>127.9 379.9</b>	ATLANTA TOWER 8L-26R 8R-26L 9L-27R 9R-27L 10-28 RWYS				ALL RWYS (8L-26R,8R-26L) (9L-27R,9R-27L) 10-28	GND CON <b>121.9</b>	ALL RWYS <b>121.75 121.65 254.4</b>
-----------------------------	--	---	--	--	--	--	-------------------------	---

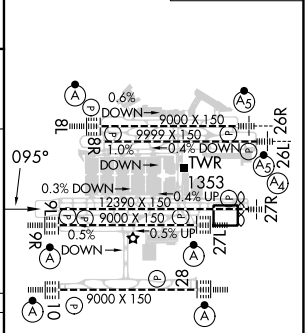
CINC DEL <b>118.1</b>	CPDLC
-----------------------------	-------

2049  $\Delta$

LOCALIZER **110.5**  
I-HZK  
Chan **42**



ELEV 1026	TDZE 9L 1019	TDZE 9R 1026
-----------	--------------	--------------



CATEGORY	A	B	C	D
S-ILS 9L	1359/50		340 (400-1)	
S-LOC 9L	1480/55	461 (500-1)	1480-1 $\frac{3}{8}$	461 (500-1 $\frac{3}{8}$ )
SIDESTEP 9R	1480/55	454 (500-1)	1480-1 $\frac{3}{8}$ 454 (500-1 $\frac{3}{8}$ )	1480-1 $\frac{1}{2}$ 454 (500-1 $\frac{1}{2}$ )

HIRL all Rwys TDZ/CL Rwys 8L, 9R, 10, 26R, 27L and 28					
FAF to MAP 5.1 NM					
Knots	60	90	120	150	180
Min:Sec	5:06	3:24	2:33	2:02	1:42

ATLANTA, GEORGIA  
Amdt 11 22APR21

33°38'N-84°26'W

# HARTSFIELD-JACKSON ATLANTA INTL (ATL) ILS or LOC RWY 9L

SE-4, 16 MAY 2024 to 13 JUN 2024

SE-4, 16 MAY 2024 to 13 JUN 2024