

ATLANTA, GEORGIA

AL-26 (FAA)

ILS PRM RWY 10 (CAT II & III) (CLOSE PARALLEL) HARTSFIELD-JACKSON ATLANTA INTL (ATL)

24137

LOC/DME I-OMO 111.55 Chan 52 (Y)	APP CRS 095°	Rwy Idg 9000 TDZE 1000 Apt Elev 1026
--	------------------------	---

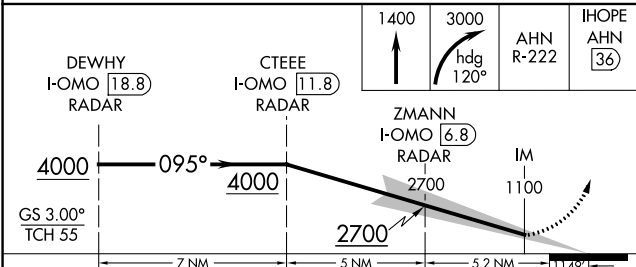
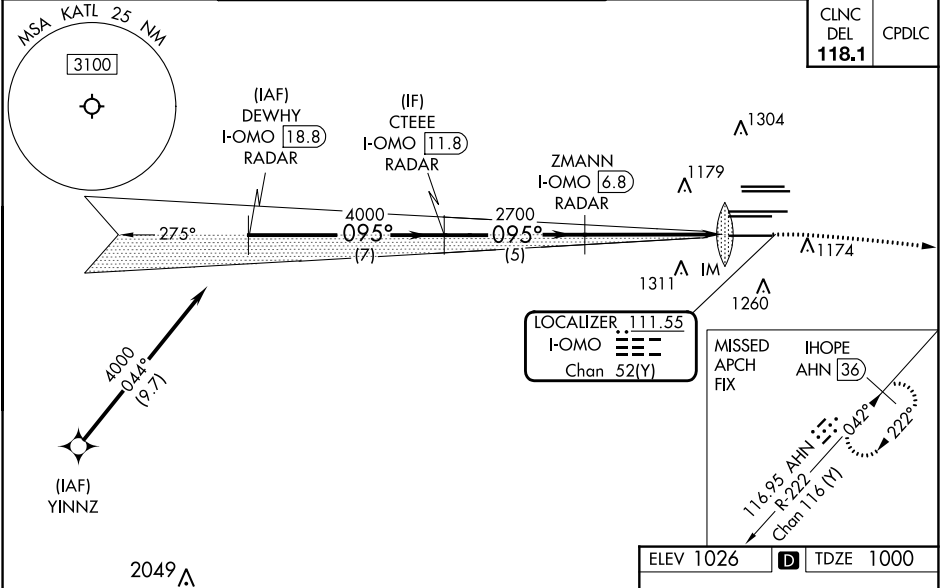
DME or RADAR required.
RNP APCH - GPS from YINNZ.

Simultaneous approach authorized. Procedure NA when glide slope not available (ILS procedures only). Dual VHF Comm required. See additional requirements on AAUP.

ALSF-2

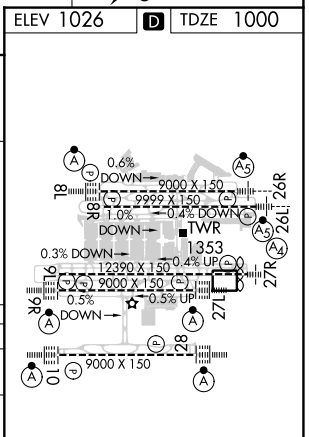
MISSED APPROACH: Climb to 1400 then climbing right turn to 3000 on heading 120° and AHN R-222 to IHOPE/AHN 36 DME and hold.

D-ATIS ARR 119.65 DEP 125.55	ATLANTA APP CON 127.9 379.9	ATLANTA TOWER 8L-26R 8R-26L 9L-27R 9R-27L 119.1 125.325 123.85 119.3 119.5 254.4 PRM 133.425	ALL 10-28 RWYS 119.5 254.4	GND CON (8L-26R,8R-26L) (9L-27R,9R-27L) 10-28 121.9 121.75 121.65 254.4	ALL RWYS 254.4
--	--	---	---	--	-----------------------------



CATEGORY	A	B	C	D
S-ILS 10	CAT II RA 110/12 100 DA 1100			
S-ILS 10	CAT III RVR 07			

CATEGORY II & III ILS - SPECIAL AIRCREW & AIRCRAFT CERTIFICATION REQUIRED



HIRL all Rwys
TDZ/CL Rwys 8L, 9R, 10, 26R, 27L and 28

SE-4, 16 MAY 2024 to 13 JUN 2024

SE-4, 16 MAY 2024 to 13 JUN 2024

ATLANTA, GEORGIA
Amdt 5 30DEC21

33°38'N-84°26'W HARTSFIELD-JACKSON ATLANTA INTL (ATL)
ILS PRM RWY 10 (CAT II & III) (CLOSE PARALLEL)