

ATLANTA, GEORGIA

AL-26 (FAA)

ILS PRM RWY 9R (CAT II & III)

24137

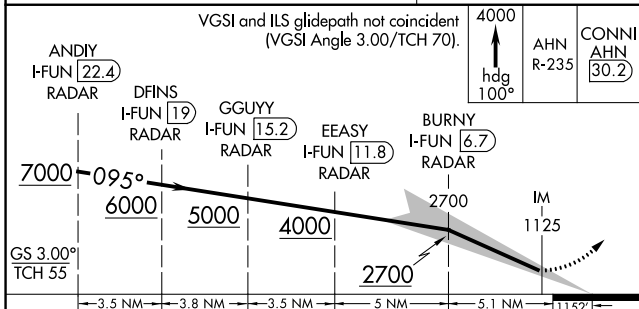
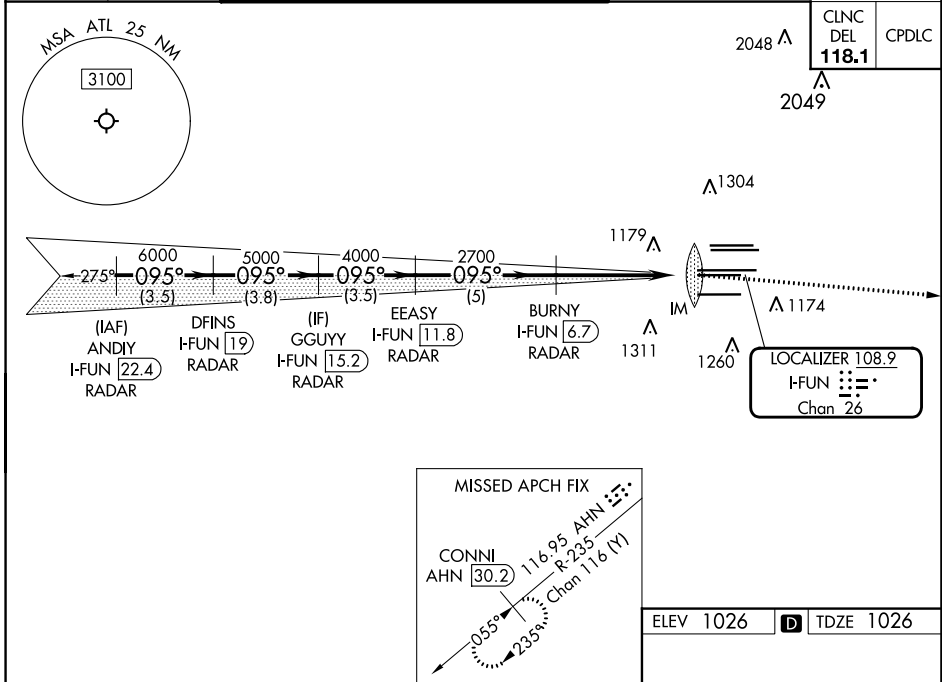
(CLOSE PARALLEL)

HARTSFIELD-JACKSON ATLANTA INTL (ATL)

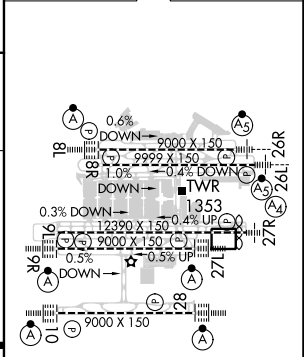
LOC/DME I-FUN 108.9 Chan 26	APP CRS 095°	Rwy Idg 9000 TDZE 1026 Apt Elev 1026
---	------------------------	---

RADAR required for procedure entry, DME.		ALS-F-2 	MISSED APPROACH: Climb to 4000 on heading 100° and AHN VOR/DME R-235 to CONNI/AHN 30.2 DME and hold.
<p>Simultaneous approach authorized. Use of FD or AP required during simultaneous operations. Dual VHF comm required. See additional requirements on AAUP.</p>			

D-ATIS ARR 119.65 DEP 125.55	ATLANTA APP CON 127.9 379.9	ATLANTA TOWER 8L-26R 8R-26L 9L-27R 9R-27L 10-28 RWYS 119.1 125.325 123.85 119.3 119.5 254.4 PRM 132.55				ALL RWYS 254.4	GND CON 121.9	ALL RWYS 121.75 121.65 254.4
--	--	---	--	--	--	-----------------------------	-------------------------	---



ELEV 1026	D TDZE 1026
-----------	--------------------



CATEGORY	A	B	C	D
S-ILS 9R	CAT II RA 118/12 100 DA 1126			
S-ILS 9R	CAT III RVR 03			

CATEGORY II & III ILS SPECIAL AIRCREW & AIRCRAFT CERTIFICATION REQUIRED

HIRL all Rwwys
TDZ/CL Rwwys 8L, 9R, 10, 26R, 27L and 28

ATLANTA, GEORGIA
Amdt 3 22APR21

33°38'N-84°26'W

HARTSFIELD-JACKSON ATLANTA INTL (ATL)

ILS PRM RWY 9R (CAT II & III) (CLOSE PARALLEL)

SE-4, 16 MAY 2024 to 13 JUN 2024

SE-4, 16 MAY 2024 to 13 JUN 2024