

OZZI ONE ARRIVAL (RNAV) Transition Routes

SE-4, 16 MAY 2024 to 13 JUN 2024

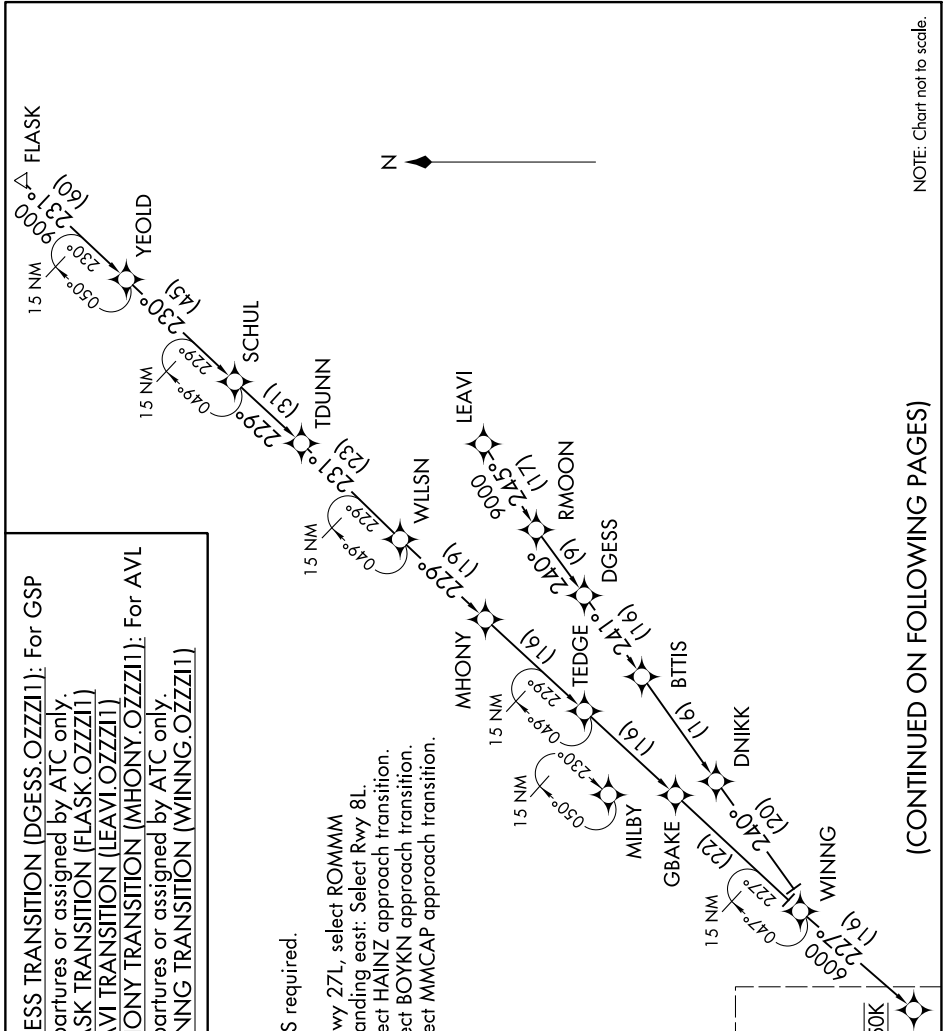
DGESS TRANSITION (DGESS.OZZI1): For GSP departures or assigned by ATC only.
 FLASK TRANSITION (FLASK.OZZI1)
 LEAVI TRANSITION (LEAVI.OZZI1)
 MHONY TRANSITION (MHONY.OZZI1): For AVL departures or assigned by ATC only.
 WINNING TRANSITION (WINNING.OZZI1)

D-ATIS ARR
 119.65
 ATLANTA APP CON
 128.525 379.9

- NOTE: RADAR required.
- NOTE: RNAV 1.
- NOTE: DME/DME/IRU or GPS required.
- NOTE: Turbojet aircraft only.
- NOTE: Landing west: Select Rwy 27L, select ROMMM approach transition; Landing east: Select Rwy 8L.
- NOTE: Landing Rwy 26R: Select HAINZ approach transition.
- NOTE: Landing Rwy 26L: Select BOYKN approach transition.
- NOTE: Landing Rwy 27R: Select MMCAP approach transition.

See following page for Arrival Routes.

OZZI
 Landing East: Expect 14000
 Landing West: Expect 12000 and 250K



NOTE: Chart not to scale.

(CONTINUED ON FOLLOWING PAGES)

SE-4, 16 MAY 2024 to 13 JUN 2024

OZZI ONE ARRIVAL (RNAV) Transition Routes