

| | | |
|-------------|----------|-------------|
| APP CRS | Rwy Idg | 9000 |
| 095° | TDZE | 1000 |
| | Apt Elev | 1026 |

RNAV (RNP) Z RWY 10

HARTSFIELD-JACKSON ATLANTA INTL (ATL)

▽ For uncompensated Baro-VNAV systems, procedure NA below -8°C (18°F) or above 54°C (130°F). GPS required. Simultaneous approach authorized; arrival from ROBNS NA. For inop ALS, increase RNP 0.11 DA all Cats visibility to RVR 4500.

ALSf-2

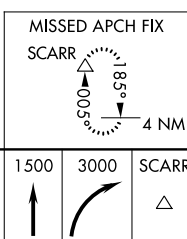
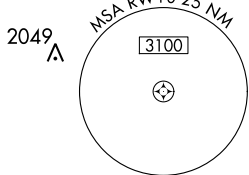
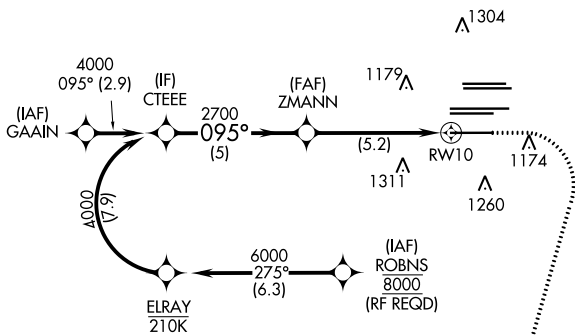


MISSED APPROACH: Climb to 1500 then climbing right turn to 3000 direct SCARR and hold.

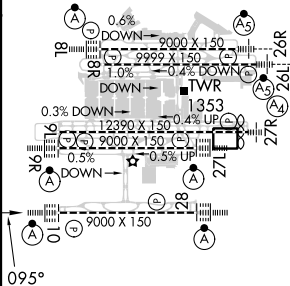
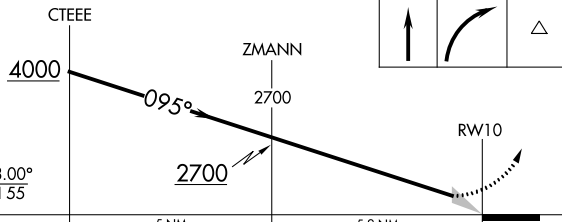
| | | | | | | | | |
|-----------------------------|--|---------------|----------------|---------------|--------------|--------------|---------------------------------|---------------|
| D-ATIS ARR 119.65 | ATLANTA APP CON 127.9 379.9 | ATLANTA TOWER | | | | ALL RWYS | GND CON | ALL RWYS |
| DEP 125.55 | | 8L-26R | 8R-26L | 9L-27R | 9R-27L | 10-28 | (8L-26R,8R-26L) (9L-27R,9R-27L) | 10-28 |
| | | 119.1 | 125.325 | 123.85 | 119.3 | 119.5 | 121.9 | 121.75 |
| | | | | | | | 121.65 | 254.4 |

2049 Δ
2049 Δ

| | |
|--------------|-------|
| CLNC DEL | CPDLC |
| 118.1 | |



ELEV 1026 **D** TDZE 1000



| | | | | | | |
|--------------------|------|--|--------|--|-------|--|
| GP 3.00° TCH 55 | CTEE | | ZMANN | | RWY10 | |
| | 4000 | | 2700 | | 2700 | |
| | 5 NM | | 5.2 NM | | | |

| | | | | |
|-------------|---|---------|---------------|---|
| CATEGORY | A | B | C | D |
| RNP 0.11 DA | | 1290/24 | 290 (300-1/2) | |
| RNP 0.30 DA | | 1456/50 | 456 (500-1) | |

AUTHORIZATION REQUIRED

HIRL all Rwy's
TDZ/CL Rwy's 8L, 9R,
10, 26R, 27L and 28

SE-4, 16 MAY 2024 to 13 JUN 2024

SE-4, 16 MAY 2024 to 13 JUN 2024