

RNAV (RNP) Z RWY 8L HARTSFIELD-JACKSON ATLANTA INTL (ATL)

| | | |
|-------------|----------|-------------|
| APP CRS | Rwy Idg | 8800 |
| 095° | TDZE | 1015 |
| | Apt Elev | 1026 |

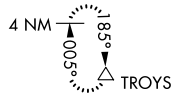
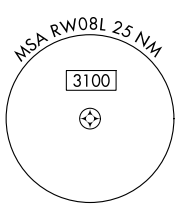
RNP AR APCH - GPS.

▼ For uncompensated Baro-VNAV systems, procedure NA below -5°C or above 54°C. For inop ALS, increase RNP 0.15 all Cats RVR to 5500. Simultaneous approach authorized. Arrival from BOLND NA during simultaneous triple approaches.

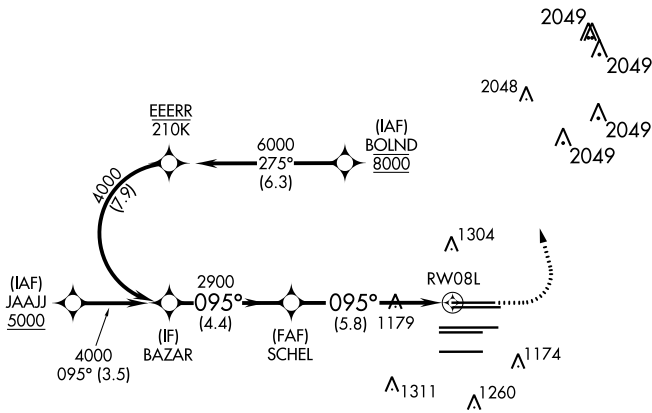
ALS-2

MISSED APPROACH: Climb to 1500 then dimbing left turn to 3500 direct TROYS and hold.

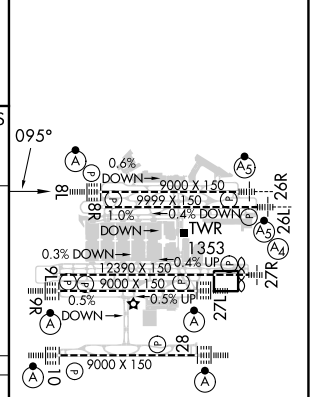
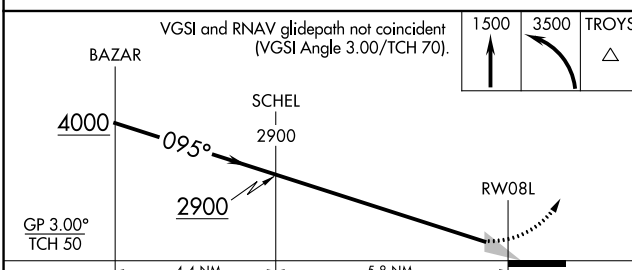
| | | | | | | | | |
|-------------------|--------------------|---------------|----------------|---------------|--------------|--------------|---------------------------------|----------------------------|
| D-ATIS | ATLANTA APP CON | ATLANTA TOWER | | | | ALL RWYS | GND CON | ALL RWYS |
| ARR 119.65 | | 8L-26R | 8R-26L | 9L-27R | 9R-27L | 10-28 | (8L-26R,8R-26L) (9L-27R,9R-27L) | 10-28 |
| DEP 125.55 | 127.9 379.9 | 119.1 | 125.325 | 123.85 | 119.3 | 119.5 | 121.9 | 121.75 121.65 254.4 |



| | |
|--------------|-------|
| CLNC DEL | CPDLC |
| 118.1 | |



| | |
|-----------|-----------|
| ELEV 1026 | TDZE 1015 |
|-----------|-----------|



| | | | | |
|-----------------|--------|---------|-------------|---|
| GP 3.00° TCH 50 | 4.4 NM | 5.8 NM | | |
| CATEGORY | A | B | C | D |
| RNP 0.15 DA | | 1380/35 | 365 (400-%) | |
| RNP 0.30 DA | | 1458/45 | 443 (500-%) | |

AUTHORIZATION REQUIRED

HIRL all Rwys
TDZ/CL Rwys 8L, 9R, 10, 26R, 27L and 28

SE-4, 16 MAY 2024 to 13 JUN 2024

SE-4, 16 MAY 2024 to 13 JUN 2024