

WAAS CH 65842 W05A	APP CRS 047°	Rwy Idg TDZE Apt Elev	3800 411 422
--	------------------------	-----------------------------	---

RNAV (GPS) RWY 5

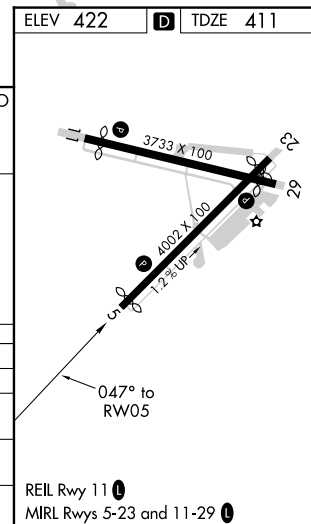
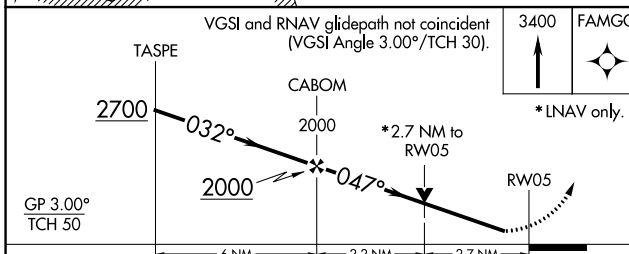
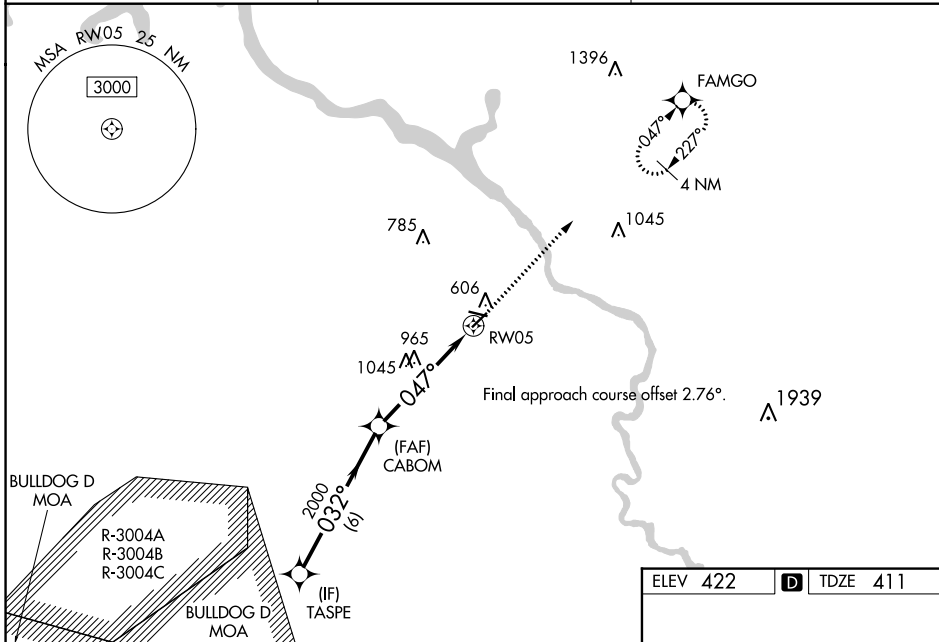
DANIEL FLD (DNL)

RNP APCH.

⚠ Baro-VNAV and VDP NA when using Augusta Rgnl at Bush Fld altimeter setting. Rwy 5 helicopter visibility reduction below $\frac{3}{4}$ SM NA. For uncompensated Baro-VNAV systems, LNAV/VNAV NA below -15°C or above 54°C . When local altimeter not received use Augusta Rgnl at Bush Fld altimeter setting: Increase LPV DA to 716 feet, LNAV/VNAV DA to 1496 feet and all MDA 60 feet; Increase LPV all Cats visibility $\frac{1}{2}$ SM, LNAV Cat A and Circling Cat C visibility $\frac{1}{4}$ SM.

MISSED APPROACH: Climb to 3400 direct FAMGO and hold, continue climb-in-hold to 3400.

ASOS 135.275	AUGUSTA APP CON * 126.8 270.3	UNICOM 123.05 (CTAF)
------------------------	---	--------------------------------



CATEGORY	A	B	C	D
LPV DA		661- $\frac{3}{4}$	250 (300- $\frac{3}{4}$)	
LNAV/VNAV DA		1441-4	1030 (1100-4)	
LNAV MDA	1280-1 869 (900-1)	1280-1 $\frac{1}{4}$ 869 (900-1 $\frac{1}{4}$)	1280-2 $\frac{1}{2}$	869 (900-2 $\frac{1}{2}$)
C CIRCLING	1280-1 $\frac{1}{4}$	858 (900-1 $\frac{1}{4}$)	1360-2 $\frac{3}{4}$ 938 (1000-2 $\frac{3}{4}$)	1360-3 938 (1000-3)

REIL Rwy 11 **Ⓛ**
MIRL Rwy 5-23 and 11-29 **Ⓛ**

SE-4, 16 MAY 2024 to 13 JUN 2024

SE-4, 16 MAY 2024 to 13 JUN 2024