

APP CRS <b>108°</b>	Rwy Idg TDZE Apt Elev	<b>3407</b> <b>422</b> <b>422</b>
------------------------	-----------------------------	---

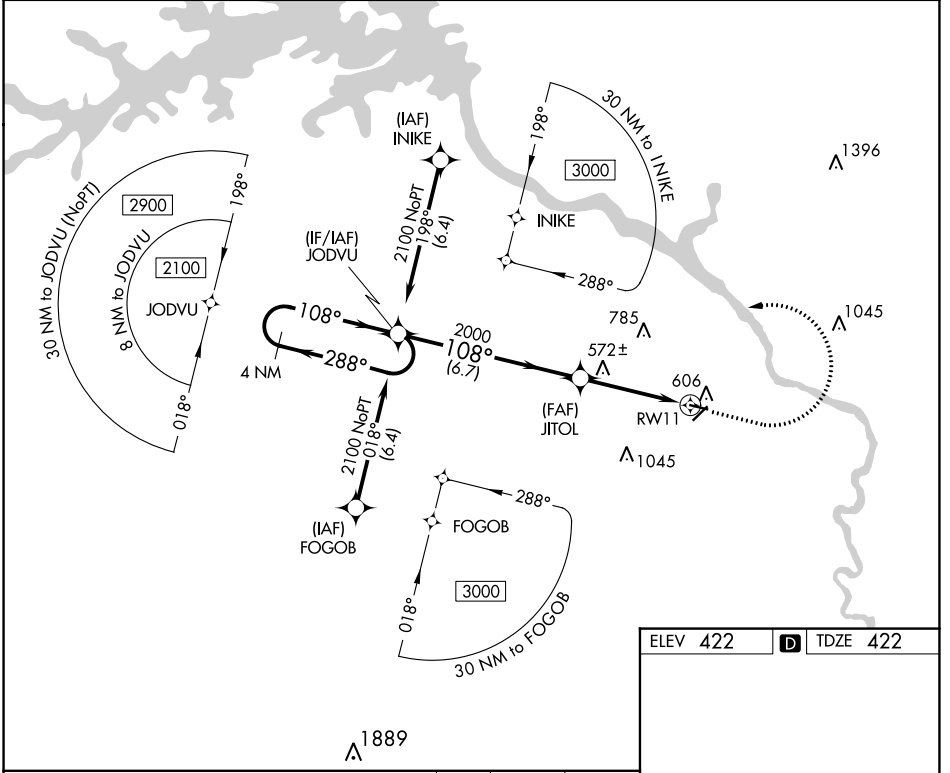
# RNAV (GPS) Y RWY 11

DANIEL FLD (DNL)

**▽** DME/DME RNP-0.3 NA. Procedure NA at night. When local altimeter setting not received, use Augusta Rgnl at Bush Fld altimeter setting and increase all MDA 60 feet and increase LNAV Cat C and D visibility ¼ SM. Rwy 11 helicopter visibility reduction below 1 SM NA.

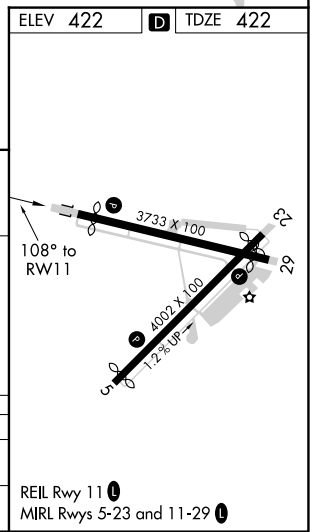
**▲** MISSED APPROACH: Climb to 1400 then climbing left turn to 2100 direct JODVU and hold.

ASOS <b>135.275</b>	AUGUSTA APP CON ★ <b>126.8 270.3</b>	UNICOM <b>123.05 (CTAF) ①</b>
------------------------	---	----------------------------------



SE-4, 16 MAY 2024 to 13 JUN 2024

SE-4, 16 MAY 2024 to 13 JUN 2024



4 NM Holding Pattern		Visual Segment - Obstacles.		
JODVU		1400	2100 JODVU	
2100 ← 288°		↑	↶	
108° →			✧	
108°				
JITOL				
2000				
RWY 11				
6.7 NM		4.1 NM		
CATEGORY	A	B	C	D
LNAV MDA	840-1	418 (500-1)	840-1½	418 (500-1½)
<b>C</b> CIRCLING	920-1	498 (500-1)	1400-3	978 (1000-3)