

BANGOR, MAINE

AL-39 (FAA)

23334

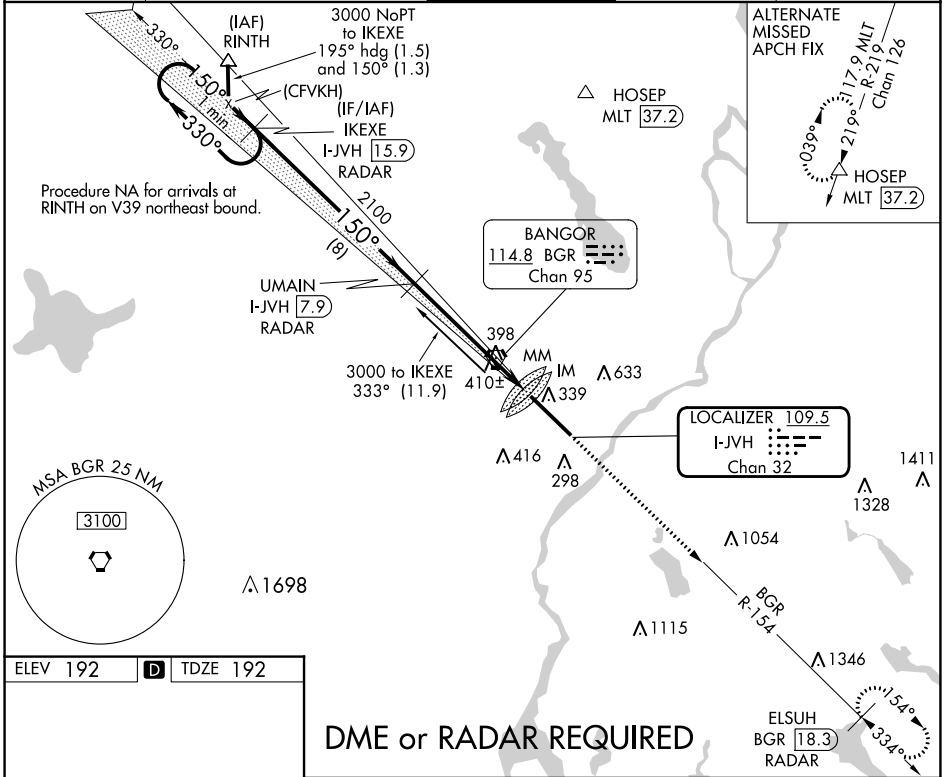
LOC/DME I-JVH <b>109.5</b> Chan <b>32</b>	APP CRS <b>150°</b>	Rwy Idg <b>11440</b> TDZE <b>192</b> Apt Elev <b>192</b>
---	------------------------	--

# ILS Y RWY 15 (CAT II & III)

BANGOR INTL (BGR)

 ASR	DME or RADAR required.	ALSF-2 	MISSED APPROACH: Climb to 3000 on heading 150° and BGR VORTAC R-154 to ELSUH/BGR 18.3 DME/RADAR and hold.	
---------	------------------------	------------	---	--

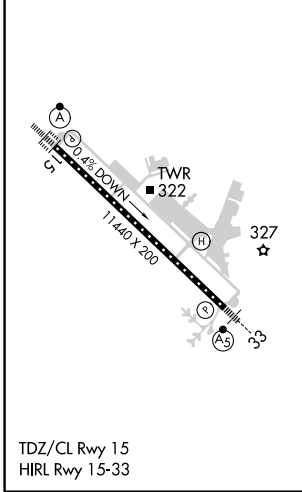
ATIS <b>127.75</b>	BANGOR APP CON <b>118.925 239.3</b>	BANGOR TOWER <b>120.7 233.7</b>	GND CON <b>121.9 348.6</b>	CLNC DEL <b>135.9 348.6</b>
-----------------------	--	------------------------------------	-------------------------------	--------------------------------



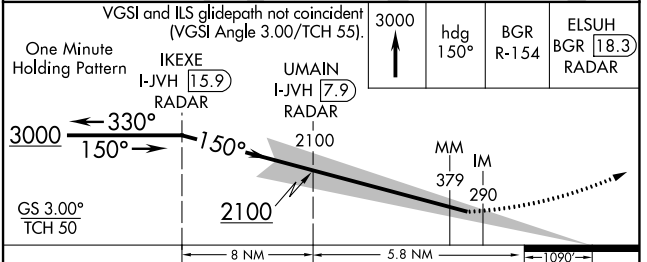
NE-1, 16 MAY 2024 to 13 JUN 2024

NE-1, 16 MAY 2024 to 13 JUN 2024

ELEV 192	<b>D</b>	TDZE 192
----------	----------	----------



## DME or RADAR REQUIRED



CATEGORY	A	B	C	D
S-ILS 15	CAT II RA 113/12 100 DA 292			
S-ILS 15	CAT III RVR 06			

## CATEGORY II & III ILS - SPECIAL AIRCREW & AIRCRAFT CERTIFICATION REQUIRED

BANGOR, MAINE  
Amdt 7 27APR17

44°48'N-68°50'W

BANGOR INTL (BGR)  
ILS Y RWY 15 (CAT II & III)