

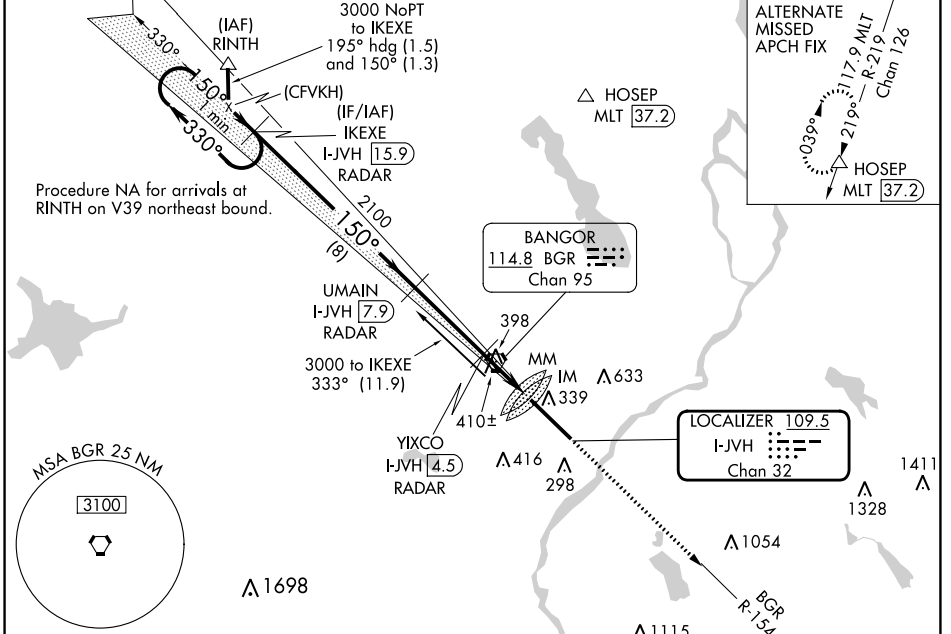
LOC/DME I-JVH <b>109.5</b> Chan <b>32</b>	APP CRS <b>150°</b>	Rwy Idg <b>11440</b> TDZE <b>192</b> Apt Elev <b>192</b>
---	------------------------	--

# ILS Y or LOC Y RWY 15

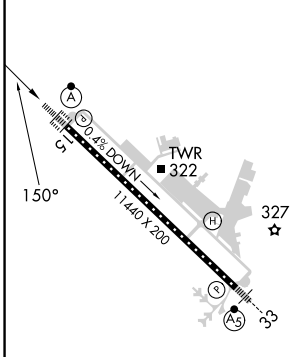
BANGOR INTL (BGR)

	Circling NA NE of Rwy 15-33. DME or RADAR required. For inoperative ALS, increase S-ILS 15 Cat E visibility to RVR 4000, and S-LOC 15 Cat C/D/E visibility to 1½ SM.	ALSF-2 	MISSED APPROACH: Climb to 3000 on heading 150° and BGR VORTAC R-154 to ELSUH/BGR 18.3 DME/RADAR and hold.

ATIS <b>127.75</b>	BANGOR APP CON <b>118.925 239.3</b>	BANGOR TOWER <b>120.7 233.7</b>	GND CON <b>121.9 348.6</b>	CLNC DEL <b>135.9 348.6</b>
-----------------------	--	------------------------------------	-------------------------------	--------------------------------



ELEV 192	<b>D</b>	TDZE 192
----------	----------	----------



## DME or RADAR REQUIRED

One Minute Holding Pattern	IKEXE I-JVH [15.9] RADAR	UMAIN I-JVH [7.9] RADAR	YIXCO I-JVH [4.5] RADAR	MM	IM	I-JVH [3.3]	I-JVH [2.1]	ELSUH BGR [18.3] RADAR
3000	330°	150°	150°	2100	2100	*1000		*LOC only.
GS 3.00°	TCH 50	VGS and ILS glidepath not coincident (VGS Angle 3.00/TCH 55).						
8 NM		3.4 NM		1.1		0.9 0.3 0.1		

FAF to MAP 5.8 NM					
Knots	60	90	120	150	180
Min:Sec	5:48	3:52	2:54	2:19	1:56
CATEGORY	A	B	C	D	E
S-ILS 15	392/18 200 (200-½)				
S-LOC 15	660/24	468 (500-½)	660/50	468 (500-1)	
<input checked="" type="checkbox"/> CIRCLING	660-1	720-1	740-1½	820-2	880-2½
	468 (500-1)	528 (600-1)	548 (600-1½)	628 (700-2)	688 (700-2½)

NE-1, 16 MAY 2024 to 13 JUN 2024

NE-1, 16 MAY 2024 to 13 JUN 2024