

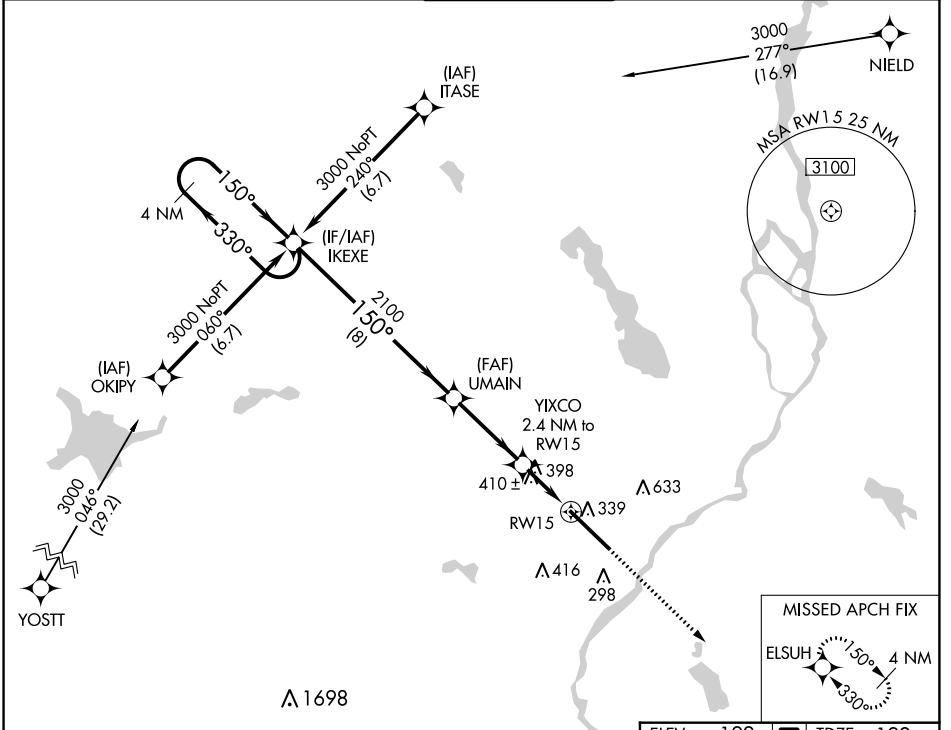
WAAS CH 82307 W15A	APP CRS 150°	Rwy Idg 11440 TDZE 192 Apt Elev 192
---------------------------------	------------------------	--

RNAV (GPS) RWY 15

BANGOR INTL (BGR)

ASR	For uncompensated Baro-VNAV systems, LNAV/VNAV NA below -19°C (-2°F) or above 54°C (130°F). DME/DME RNP-0.3 NA. For inoperative ALS, increase LPV Cat E visibility to RVR 4000, LNAV/VNAV all Cats visibility to RVR 6000, and LNAV Cats C/D/E visibility to 1 3/8 SM. Circling NA NE of Rwy 15-33.	ALSF-2 	MISSED APPROACH: Climb to 3000 direct ELSUH and hold.
-----	---	------------	--

ATIS 127.75	BANGOR APP CON 118.925 239.3	BANGOR TOWER 120.7 233.7	GND CON 121.9 348.6	CLNC DEL 135.9 348.6
-----------------------	--	------------------------------------	-------------------------------	--------------------------------



NE-1, 16 MAY 2024 to 13 JUN 2024

NE-1, 16 MAY 2024 to 13 JUN 2024

4 NM Holding Pattern 3000 ← 330° / 150° → GP 3.00° TCH 50	VGSI and RNAV glidepath not coincident (VGSI Angle 3.00/TCH 55).	3000 ↑ ELSUH										
IKEXE UMAIN YIXCO 2.4 NM to RW15 * 1.3 NM to RW15	2100 1000* 8 NM 3.4 NM 1.1 1.3	* LNAV only.										
CATEGORY LPV DA LNAV/VNAV DA LNAV MDA CIRCILING	<table border="1"> <tr> <th>A</th> <th>B</th> <th>C</th> <th>D</th> <th>E</th> </tr> <tr> <td>660-1 468 (500-1)</td> <td>468 (500-1)</td> <td>740-1 1/2 548 (600-1 1/2)</td> <td>820-2 628 (700-2)</td> <td>880-2 1/2 688 (700-2 1/2)</td> </tr> </table>	A	B	C	D	E	660-1 468 (500-1)	468 (500-1)	740-1 1/2 548 (600-1 1/2)	820-2 628 (700-2)	880-2 1/2 688 (700-2 1/2)	ELEV 192 TDZE 192
A	B	C	D	E								
660-1 468 (500-1)	468 (500-1)	740-1 1/2 548 (600-1 1/2)	820-2 628 (700-2)	880-2 1/2 688 (700-2 1/2)								

