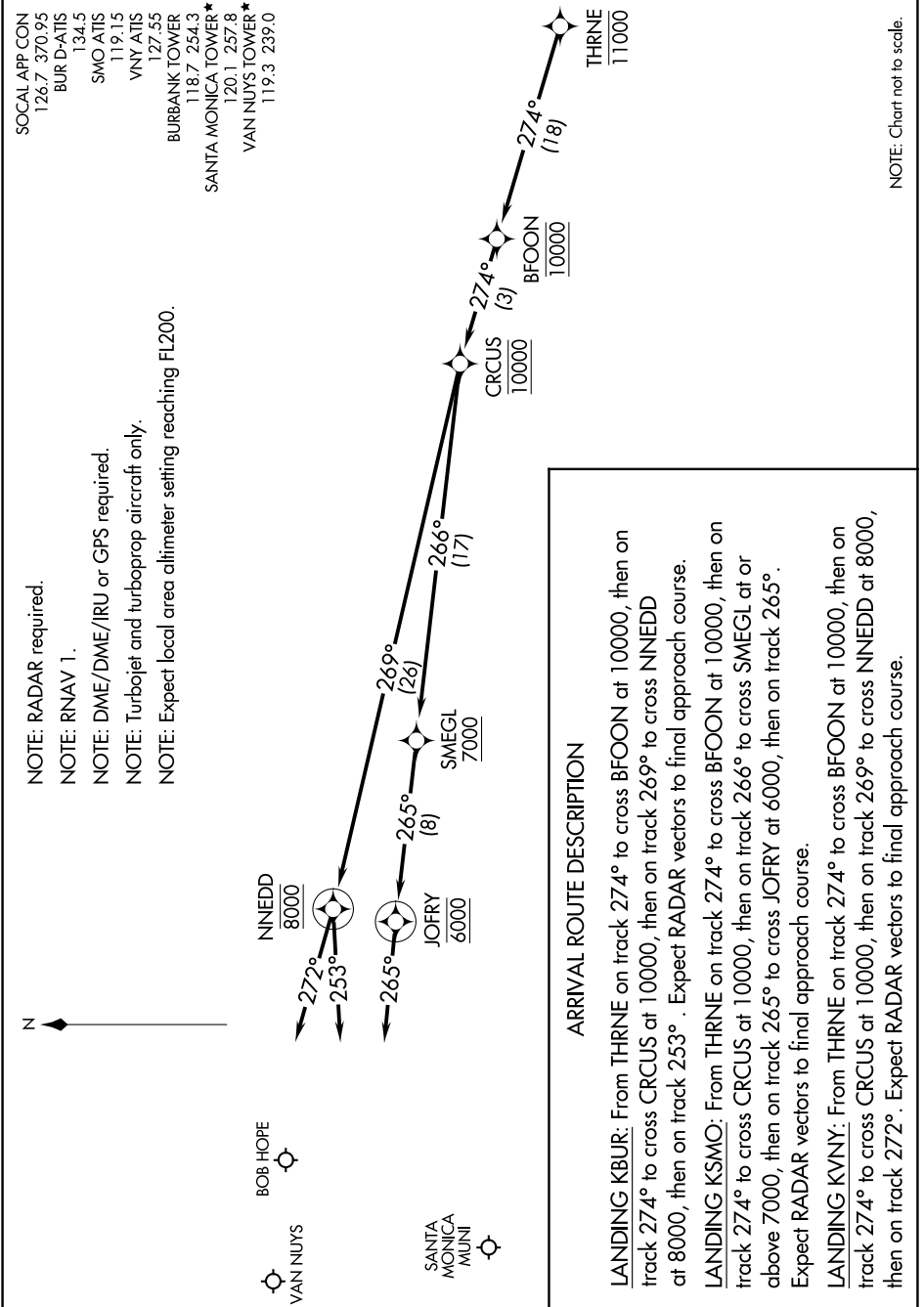


THRNE THREE ARRIVAL (RNAV) Arrival Routes

AL-67 (FAA)

BURBANK, CALIFORNIA

SW-3, 16 MAY 2024 to 13 JUN 2024



- NOTE: RADAR required.
- NOTE: RNAV 1.
- NOTE: DME/DME/IRU or GPS required.
- NOTE: Turbojet and turboprop aircraft only.
- NOTE: Expect local area altimeter setting reaching FL200.

ARRIVAL ROUTE DESCRIPTION

LANDING KBUR: From THRNE on track 274° to cross BFOON at 10000, then on track 274° to cross CRCUS at 10000, then on track 269° to cross NNEDD at 8000, then on track 253°. Expect RADAR vectors to final approach course.

LANDING KSMO: From THRNE on track 274° to cross BFOON at 10000, then on track 274° to cross CRCUS at 10000, then on track 266° to cross SMEGL at or above 7000, then on track 265° to cross JOFRY at 6000, then on track 265°. Expect RADAR vectors to final approach course.

LANDING KVNY: From THRNE on track 274° to cross BFOON at 10000, then on track 274° to cross CRCUS at 10000, then on track 269° to cross NNEDD at 8000, then on track 272°. Expect RADAR vectors to final approach course.

NOTE: Chart not to scale.