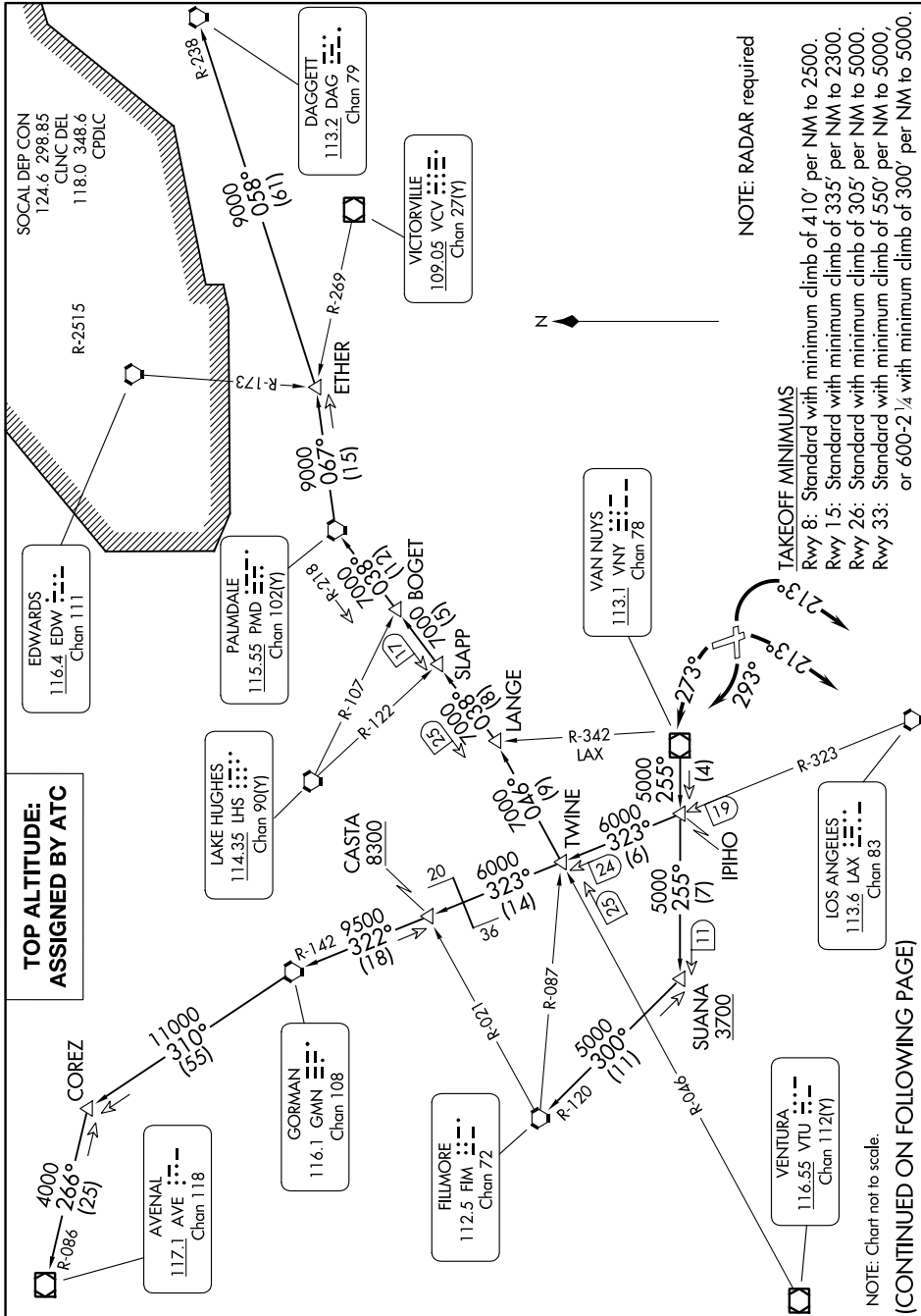


VAN NUYS THREE DEPARTURE

AL-67 (FAA)

BOB HOPE (BUR)
BURBANK, CALIFORNIA

SW-3, 16 MAY 2024 to 13 JUN 2024



NOTE: RADAR required

TAKEOFF MINIMUMS

Rwy 8: Standard with minimum climb of 410' per NM to 2500.
 Rwy 15: Standard with minimum climb of 335' per NM to 2300.
 Rwy 26: Standard with minimum climb of 305' per NM to 5000.
 Rwy 33: Standard with minimum climb of 550' per NM to 5000,
 or 600-2 1/4 with minimum climb of 300' per NM to 5000.

TOP ALTITUDE:
ASSIGNED BY ATC

NOTE: Chart not to scale.

(CONTINUED ON FOLLOWING PAGE)

SW-3, 16 MAY 2024 to 13 JUN 2024

VAN NUYS THREE DEPARTURE

(VNY3.VNY) 26MAY16

BURBANK, CALIFORNIA
BOB HOPE (BUR)