

SW-3, 16 MAY 2024 to 13 JUN 2024

SOCAL DEP CON  
124.6 298.85  
CINC DEL  
118.0 348.6  
CPDIC

### TAKEOFF MINIMUMS

- Rwy 8: Standard with minimum climb of 420' per NM to 2500.
- Rwy 15: Standard with minimum climb of 340' per NM to 2100.
- Rwy 26: Standard with minimum climb of 380' per NM to 4800.
- Rwy 33: Standard with minimum climb of 460' per NM to 4900.

NOTE: DME/DME/IRU or GPS required.

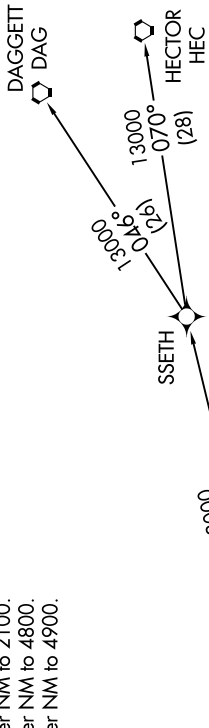
NOTE: RNAV 1.

NOTE: RADAR required.

NOTE: This departure procedure authorized for turboprop aircraft only.



**TOP ALTITUDE:**  
13000



NOTE: Chart not to scale.

### DEPARTURE ROUTE DESCRIPTION

TAKEOFF RUNWAYS 8, 15: Climbing right turn heading 210° or as assigned by ATC, expect vectors to cross CCHUM at or above 6800, then on track 003° to cross KIMMO at or above 7000, then on depicted route to VVERA, thence . . . . .

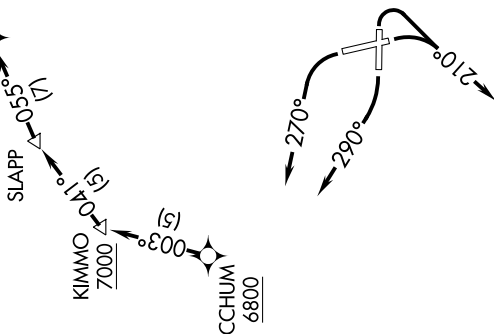
TAKEOFF RUNWAY 26: Climbing right turn heading 290° or as assigned by ATC, expect vectors to cross CCHUM at or above 6800, then on track 003° to cross KIMMO at or above 7000, then on depicted route to VVERA, thence . . . . .

TAKEOFF RUNWAY 33: Climbing left turn heading 270° or as assigned by ATC, expect vectors to cross CCHUM at or above 6800, then on track 003° to cross KIMMO at or above 7000, then on depicted route to VVERA, thence . . . . .

. . . . on (transition). Maintain 13000. Expect filed altitude 10 minutes after departure.

DAGGETT TRANSITION (VVERA2.DAG)

HECTOR TRANSITION (VVERA2.HEC)



SW-3, 16 MAY 2024 to 13 JUN 2024