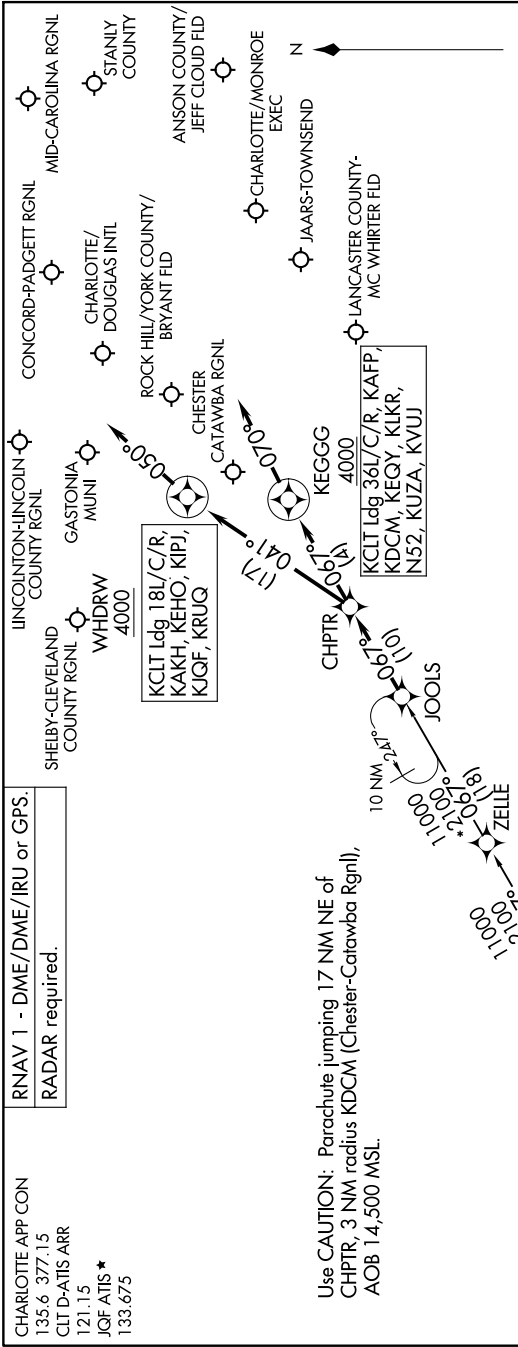


JOOLS ONE ARRIVAL (RNAV)

CHARLOTTE, NORTH CAROLINA

SE-2, 16 MAY 2024 to 13 JUN 2024



ARRIVAL ROUTE DESCRIPTION

THRSR TRANSITION (THRSR..JOOLS1)
WANSA TRANSITION (WANSA.JOOLS1)

KCLT: From JOOLS on track 067° to CHPTR. **LANDING RUNWAYS 18L/C/R:** From CHPTR on track 041° to cross WHDRW at or above 4000, then on track 050°. Expect RADAR vectors to final approach course. **LANDING RUNWAYS 36L/C/R:** From CHPTR on track 067° to cross KEGGG at or above 4000, then on track 070°. Expect RADAR vectors to final approach course. **LANDING KAKH/KRUQ/KEHO/KIQF/KIPJ:** From JOOLS on track 067° to CHPTR, then on track 041° to cross WHDRW at or above 4000, then on track 050°. Expect RADAR vectors to final approach course. **LANDING KDCM/KEGY/KUZA/KAFP/N52/KVUJ/KLKR:** From JOOLS on track 067° to CHPTR, then on track 067° to cross KEGGG at or above 4000, then on track 070°. Expect RADAR vectors to final approach course.

SE-2, 16 MAY 2024 to 13 JUN 2024

JOOLS ONE ARRIVAL (RNAV)

CHARLOTTE, NORTH CAROLINA

NOTE: Chart not to scale.