

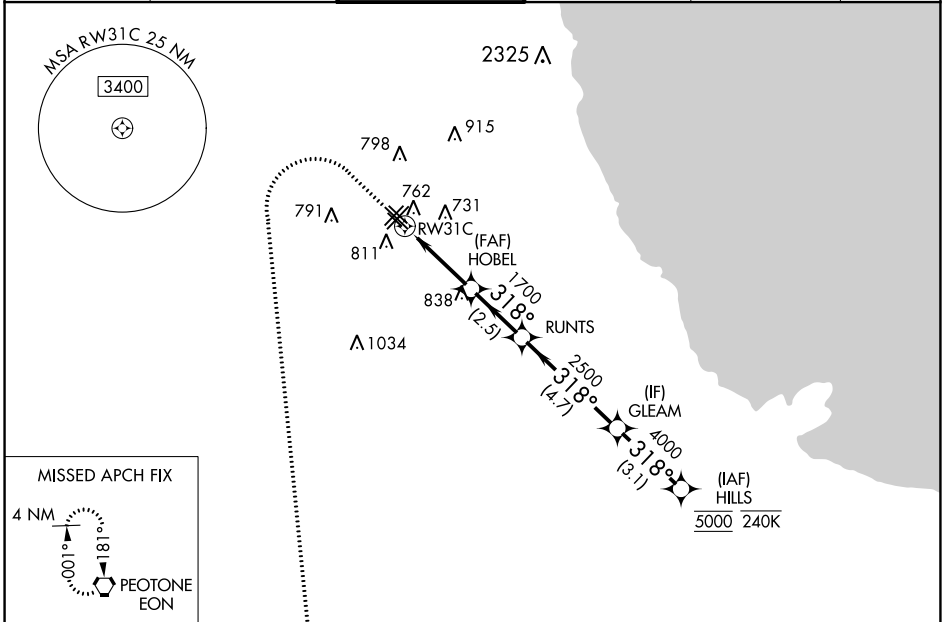
WAAS CH 50512 W31A	APP CRS 318°	Rwy ldg TDZE 613 Apt Elev 620
----------------------------------------	------------------------	---------------------------------------------------

RNAV (GPS) Z RWY 31C

CHICAGO MIDWAY INTL (MDW)

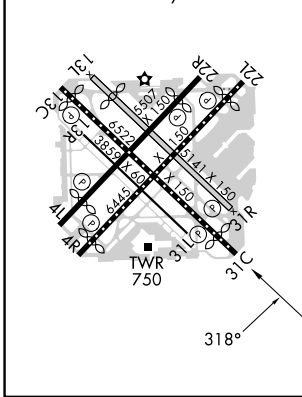
RNP APCH - GPS.		MISSED APPROACH: Climb to 1100 then climbing left turn to 2600 direct EON VORTAC and hold.
RADAR required.		
<p>▼ Circling Rwy 31R NA at night. Rwy 31C helicopter visibility reduction below RVR 4000 NA. ▲ For uncompensated Baro-VNAV systems, LNAV/VNAV NA below -19°C or above 54°C.</p>		

D-ATIS 132.75	CHICAGO APP CON 128.2 353.875	MIDWAY TOWER 135.2 269.125	GND CON 118.075	CLNC DEL 124.625	CPDLC
-------------------------	-----------------------------------------	--------------------------------------	---------------------------	----------------------------	-------

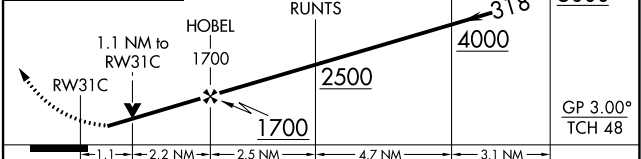


ELEV 620	D	TDZE 613
-----------------	----------	-----------------

HIRL Rws 4R-22L and 13C-31C
MIRL Rws 4L-22R, 13L-31R, and 13R-31L
REIL Rws 4R, 22L, and 31C
RLS Rws 13C and 31C



1100	2600	EON	VGSI and RNAV glidepath not coincident (VGSI Angle 3.00/TCH 63).
------	------	-----	------------------------------------------------------------------



CATEGORY	A	B	C	D
LPV DA	863/40 250 (300-¾)			
LNAV/VNAV DA	953/50 340 (400-1)			
LNAV MDA	1020/55 407 (400-1)		1020/60 407 (400-1¼)	
C CIRCLING	1120-1 500 (500-1)		1340-2 720 (800-2) 1340-2¼ 720 (800-2¼)	

EC-3, 16 MAY 2024 to 13 JUN 2024

EC-3, 16 MAY 2024 to 13 JUN 2024