

LOC/DME I-LUK	APP CRS	Rwy Idg	6101
110.9	205°	TDZE	475
Chan 46		Apt Elev	483

ILS or LOC RWY 21L

CINCINNATI MUNI/LUNKEN FLD (LUK)

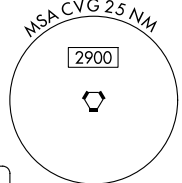
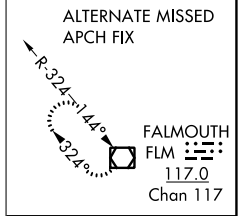
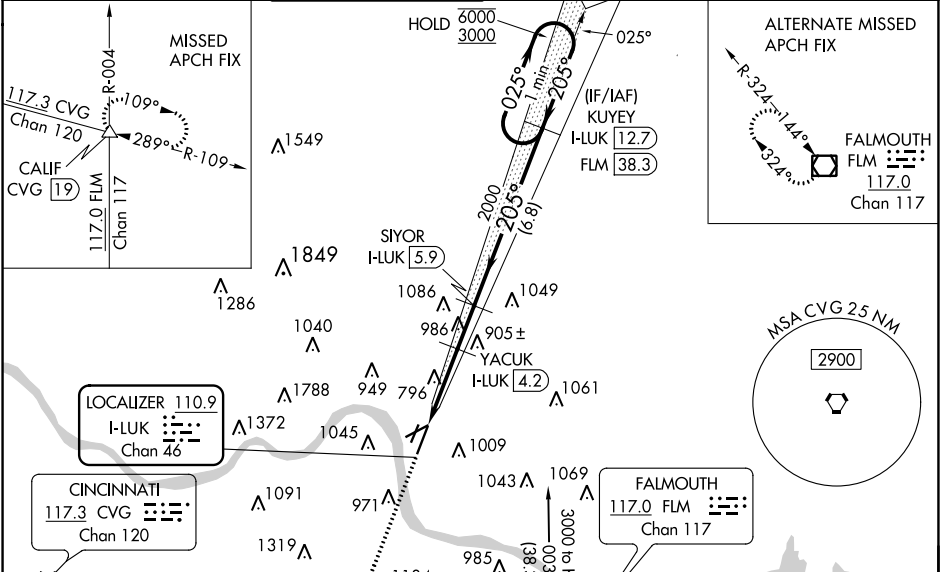
DME required.

Circle NA for Cat D northwest of Rws 7 and 21R. Rwy 21L helicopter visibility reduction below 3/4 SM NA. VDP NA when using Cincinnati/Northern Kentucky Intl altimeter setting. When local altimeter setting not received, use Cincinnati/Northern Kentucky 21L altimeter setting and increase all DA 86 feet and all MDA 100 feet; increase S-LOC 21L Cat A/B visibility to RVR 5500 and Cat C/D to 2 SM. For inop ALS when using Cincinnati/Northern Kentucky Intl altimeter setting and increase S-ILS 21L all Cats visibility to RVR 6000 and S-LOC 21L Cat A to RVR 5500 and Cat C/D to 2 1/2 SM. For inop ALS, increase S-LOC 21L Cat A/B visibility to RVR 5500, and Cat C/D to 2 SM. Circling Rwy 3L, 7, 21R NA at night.

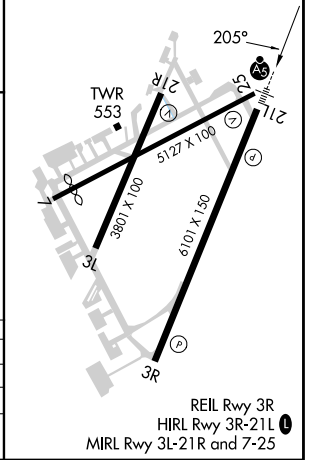
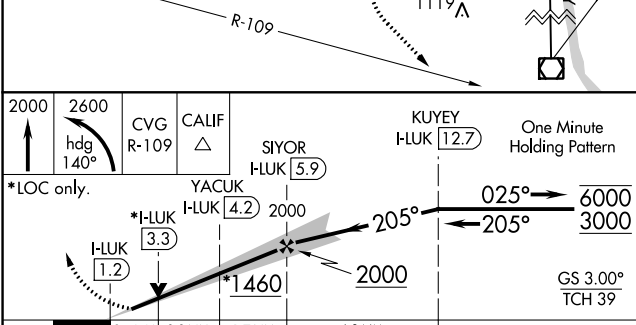


MISSED APPROACH:
Climb to 2000 then climbing left turn to 2600 on heading 140° and CVG VORTAC R-109 to CALIF/CVG 19 DME and hold.

ATIS	CINCINNATI APP CON	LUNKEN TOWER *	GND CON	CLNC DEL	CLNC DEL	UNICOM
123.6	121.0 254.25	118.7 (CTAF) 0 257.8	121.9	121.9	124.9 (when twr closed)	122.95



ELEV	483	TDZE	475
------	------------	------	------------



CATEGORY	A	B	C	D
S-ILS 21L		798/40	323 (400-3/4)	
S-LOC 21L	1200/40	725 (800-3/4)	1200-1 5/8	725 (800-1 1/2)
CIRCLING	1260-1 777 (800-1)	1360-1 1/4 877 (900-1 1/4)	1360-2 1/2 877 (900-2 1/2)	1400-3 917 (1000-3)

EC-2, 16 MAY 2024 to 13 JUN 2024

EC-2, 16 MAY 2024 to 13 JUN 2024