

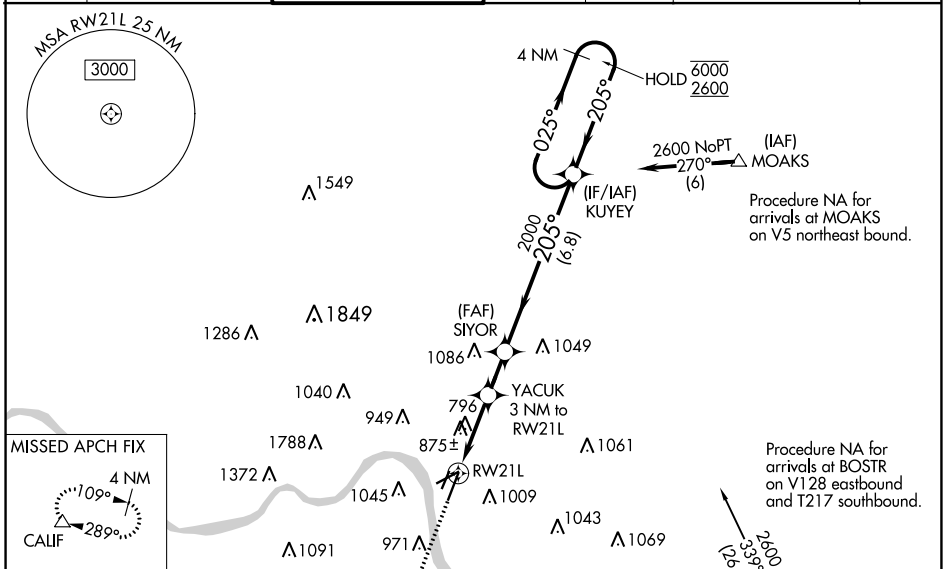
WAAS CH 42511 W21A	APP CRS 205°	Rwy Idg TDZE Apt Elev	6101 475 483
--	------------------------	-----------------------------	---

RNAV (GPS) RWY 21L

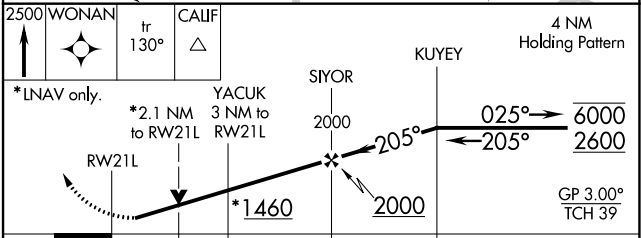
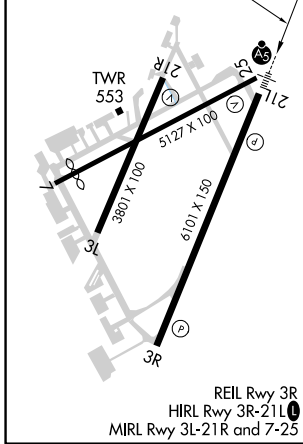
CINCINNATI MUNI/LUNKEN FLD (LUK)

RNP APCH. ▼ Circling NA for Cat D north of Rwy 7 and northwest of Rwy 21R. Circling Rwy 3L, 7, 21R NA at night. Rwy 21L helicopter visibility reduction below 3/4 SM NA. Inop table does not apply to LNAV/VNAV. For uncompensated Baro-VNAV systems, LNAV/VNAV NA below -15°C or above 54°C. For inop ALS, increase LPV all Cats visibility to RVR 4500, LNAV Cats A/B visibility to RVR 5500 and LNAV Cats C/D visibility to 2 SM.	MALSR 	MISSED APPROACH: Climb to 2500 direct WONAN and on track 130° to CALIF and hold, continue climb-in-hold to 2600.
---	-----------	---

ATIS 123.6	CINCINNATI APP CON 121.0 254.25	LUNKEN TOWER ★ 118.7 (CTAF) 257.8	GND CON 121.9	CLNC DEL 121.9	CLNC DEL 124.9 (when twr closed)	UNICOM 122.95
----------------------	---	---	-------------------------	--------------------------	---	-------------------------



ELEV 483	D	TDZE 475
----------	----------	----------



CATEGORY	A	B	C	D
LPV DA		756/40	281 (300-3/4)	
LNAV/VNAV DA		1217-2 1/4	742 (800-2 1/4)	
LNAV MDA	1200/40	725 (800-3/4)	1200-1 5/8	725 (800-1 5/8)
CIRCLING	1300-1 1/4 817 (900-1 1/4)	1360-1 1/4 877 (900-1 1/4)	1360-2 1/2 877 (900-2 1/2)	1360-2 3/4 877 (900-2 3/4)

EC-2, 16 MAY 2024 to 13 JUN 2024

EC-2, 16 MAY 2024 to 13 JUN 2024