

LOC/DME I-PVY 111.55	APP CRS 238°	Rwy Idg TDZE 780	9000
Chan 52(Y)		Apt Elev 799	

ILS RWY 24R (SA CAT I)

CLEVELAND-HOPKINS INTL (CLE)

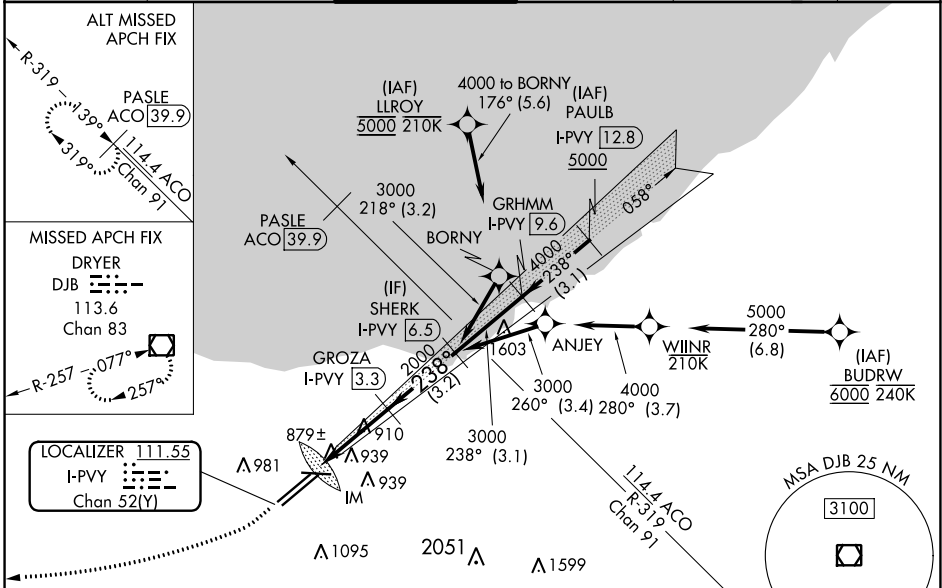
DME required. Aircraft not DME/DME/IRU or GPS equipped - RADAR required for procedure entry. RNAV 1. From LLROY and BUDRW: RNAV 1-DME/DME/IRU or GPS required for procedure entry.

Requires specific OPSPEC, MSPEC, or LOA approval and use of HUD to DH. Simultaneous approach authorized. Simultaneous operations require use of vertical guidance; maintain last assigned altitude until established on glideslope.

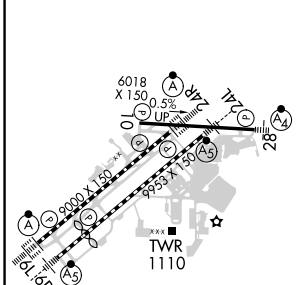
ALSF-2

MISSED APPROACH: Climb to 1700 then climbing right turn to 3000 direct DJB VOR/DME and hold.

D-ATIS ARR 127.85 DEP 132.375	CLEVELAND APP CON 126.55 346.325	CLEVELAND TOWER 124.5 273.45	GND CON 121.7 273.45	CLNC DEL 125.05 273.45	CPDLC
---	--	--	--------------------------------	----------------------------------	-------



ELEV 799	D	TDZE 780
----------	---	----------



CATEGORY	A	B	C	D
S-ILS 24R	RA 150/14 150 DA 930			

REIL Rwy 10
TDZ/CL Rwy 6L, 6R, 24L and 24R
HIRL Rwy 6L-24R, 6R-24L and 10-28

SA CATEGORY I ILS - SPECIAL AIRCREW & AIRCRAFT CERTIFICATION REQUIRED

EC-2, 16 MAY 2024 to 13 JUN 2024

EC-2, 16 MAY 2024 to 13 JUN 2024