

LOC/DME I-LIZ 111.55 Chan 52 (Y)	APP CRS 058°	Rwy Idg 9000 TDZE 773 Apt Elev 799
--	------------------------	---

ILS RWY 6L (CAT II & III)

CLEVELAND-HOPKINS INTL (CLE)

From GROHL, HICKR, and KWENE: RNAV 1-DME/DME/IRU or GPS required for procedure entry. Aircraft not DME/DME/IRU or GPS equipped - RADAR required for procedure entry. RNAV 1.

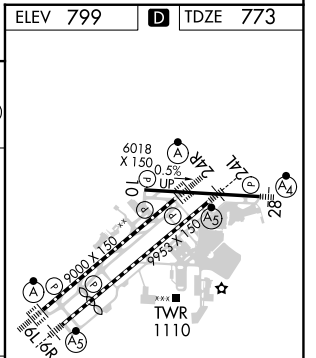
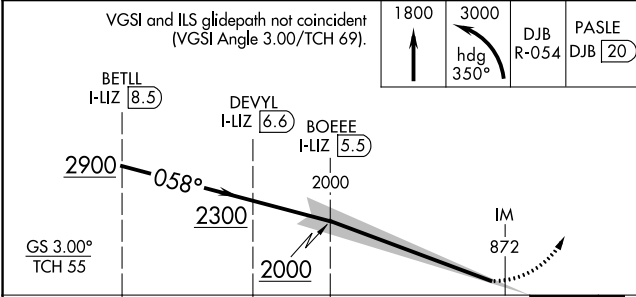
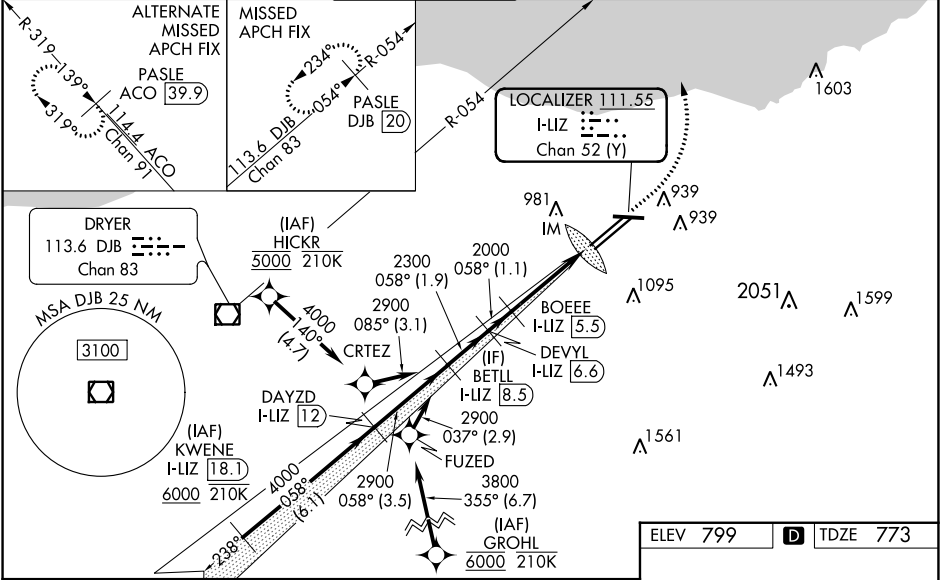
DME required.

Simultaneous approach authorized.
Simultaneous operations require use of vertical guidance;
maintain last assigned altitude until established on glideslope.

ALSF-2

MISSED APPROACH: Climb to 1800 then climbing left turn to 3000 on heading 350° and DJB VOR/DME R-054 to PASLE/DJB 20 DME and hold.

D-ATIS ARR 127.85 DEP 132.375	CLEVELAND APP CON 126.55 346.325	CLEVELAND TOWER 124.5 273.45	GND CON 121.7 273.45	CLNC DEL 125.05 273.45	CPDLC
---	--	--	--------------------------------	----------------------------------	-------



CATEGORY	A	B	C	D
S-ILS 6L	CAT II RA 111/12 100 DA 873			
S-ILS 6L	CAT III RVR 06			

CATEGORY II & III ILS - SPECIAL AIRCREW & AIRCRAFT CERTIFICATION REQUIRED

REIL Rwy 10
TDZ/CL Rwy 6L, 6R, 24L, and 24R
HIRL Rws 6L-24R, 6R-24L and 10-28

EC-2, 16 MAY 2024 to 13 JUN 2024

EC-2, 16 MAY 2024 to 13 JUN 2024