

CLEVELAND, OHIO

AL-84 (FAA)

22139

| | |
|------------------------|------------------------|
| APP CRS 058° | Rwy Idg 9000 |
| | TDZE 773 |
| | Apt Elev 799 |

RNAV (RNP) Z RWY 6L

CLEVELAND-HOPKINS INTL (CLE)

RNP AR APCH.

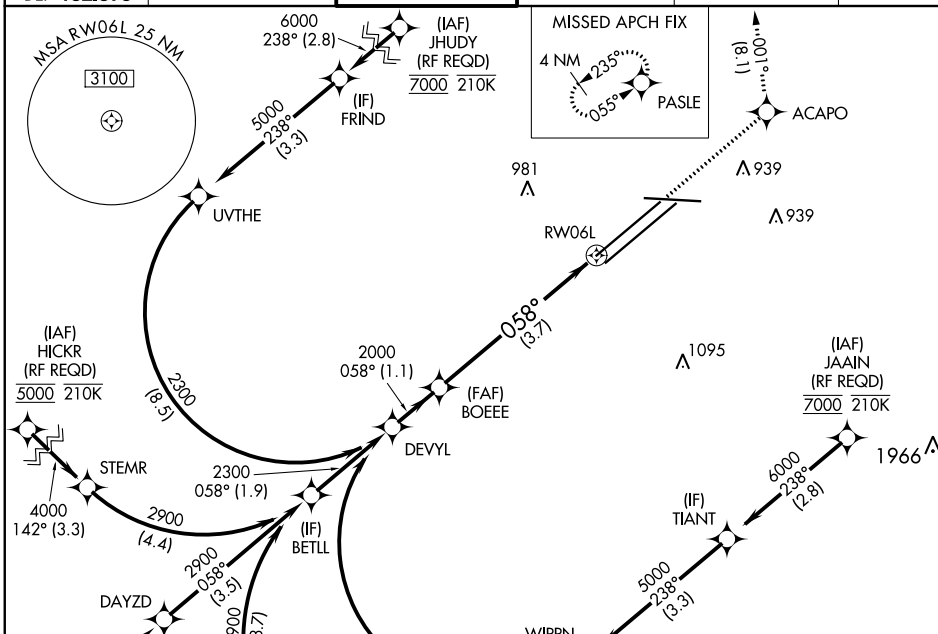
For uncompensated Baro-VNAV systems, procedure NA below -18°C (0°F) or above 54°C (130°F). For inop ALS, increase RNP 0.17 all Cats visibility to RVR 5500 and RNP 0.30 all Cats visibility to RVR 6000.

ALSF-2



MISSED APPROACH: Climb to 3000 direct ACAPO and on track 001° to PASLE and hold.

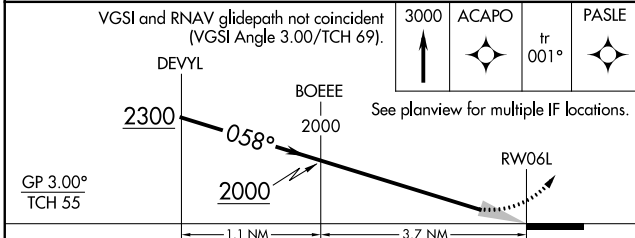
| | | | | | |
|---|--|--|--------------------------------|----------------------------------|-------|
| D-ATIS ARR 127.85 DEP 132.375 | CLEVELAND APP CON 126.55 346.325 | CLEVELAND TOWER 124.5 273.45 | GND CON 121.7 273.45 | CLNC DEL 125.05 273.45 | CPDLC |
|---|--|--|--------------------------------|----------------------------------|-------|



EC-2, 16 MAY 2024 to 13 JUN 2024

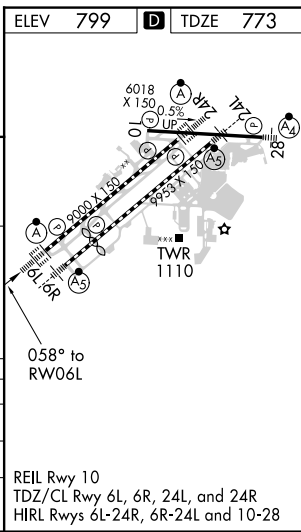
EC-2, 16 MAY 2024 to 13 JUN 2024

| | |
|----------|-------------------|
| ELEV 799 | D TDZE 773 |
|----------|-------------------|



| CATEGORY | A | B | C | D |
|-------------|---|---------|---------------|---|
| RNP 0.17 DA | | 1123/30 | 350 (400-5%) | |
| RNP 0.30 DA | | 1176/40 | 403 (400-3/4) | |

AUTHORIZATION REQUIRED



CLEVELAND, OHIO
Orig 24MAY18

41°25'N-81°51'W

CLEVELAND-HOPKINS INTL (CLE) RNAV (RNP) Z RWY 6L

REIL Rwy 10
TDZ/CL Rwy 6L, 6R, 24L, and 24R
HIRL Rwy 6L-24R, 6R-24L and 10-28