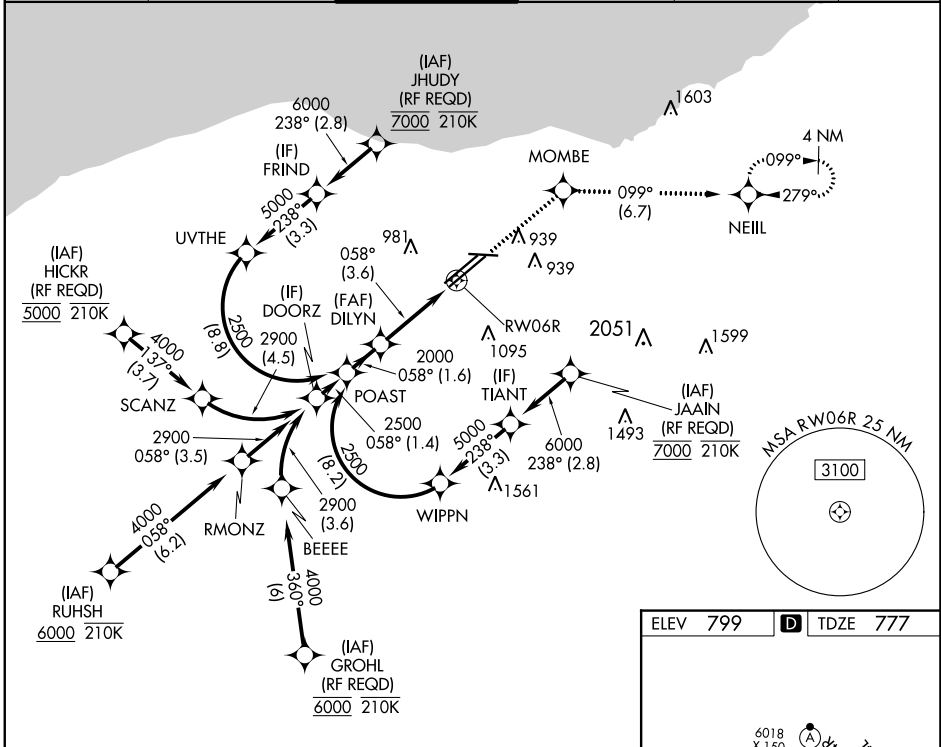


APP CRS	Rwy Idg	8029
058°	TDZE	777
	Apt Elev	799

RNAV (RNP) Z RWY 6R

CLEVELAND-HOPKINS INTL (CLE)

RNP AR APCH. ▼ For unconsented Baro-VNAV systems, procedure NA below -18°C (0°F) or above 46°C (114°F). For inop ALS, increase RNP 0.15 all Cots visibility to RVR 5500.		MALSR 	MISSED APPROACH: Climb to 3000 direct MOMBE and on track 099° to NEILL and hold. *Missed approach requires minimum climb of 270 feet per NM to 1400.		
D-ATIS ARR 127.85 DEP 132.375	CLEVELAND APP CON 126.55 346.325	CLEVELAND TOWER 124.5 273.45	GND CON 121.7 273.45	CLNC DEL 125.05 273.45	CPDLC

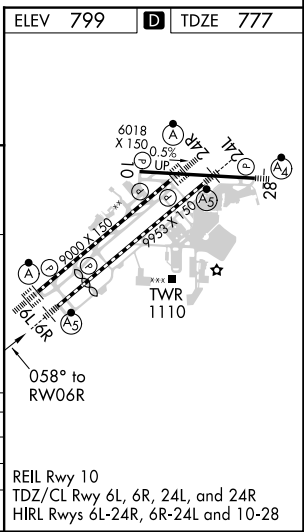


EC-2, 16 MAY 2024 to 13 JUN 2024

EC-2, 16 MAY 2024 to 13 JUN 2024

See planview for multiple IF locations.

POAST	DILYN	3000	MOMBE	tr 099°	NEILL
GP 3.10° TCH 58 2500 — 058° — 2000 1.6 NM 3.6 NM					
CATEGORY	A	B	C	D	
RNP 0.15 DA*	1127/30		350 (400- ² / ₃)		
RNP 0.30 DA	1229/45		452 (500- ² / ₃)		
AUTHORIZATION REQUIRED					



REIL Rwy 10
 TDZ/CL Rwy 6L, 6R, 24L, and 24R
 HIRL Rwy 6L-24R, 6R-24L and 10-28