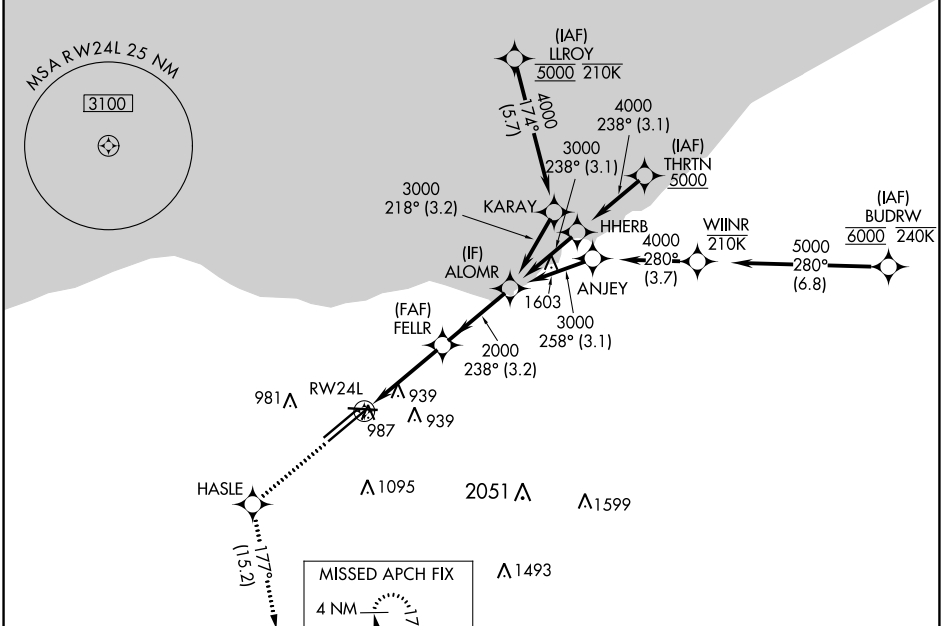


WAAS CH 77506 W24B	APP CRS 238°	Rwy Idg TDZE 786 Apt Elev 799	9953
--	------------------------	---	-------------

RNAV (GPS) Y RWY 24L

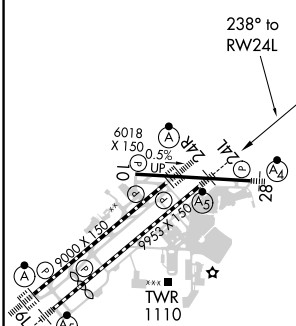
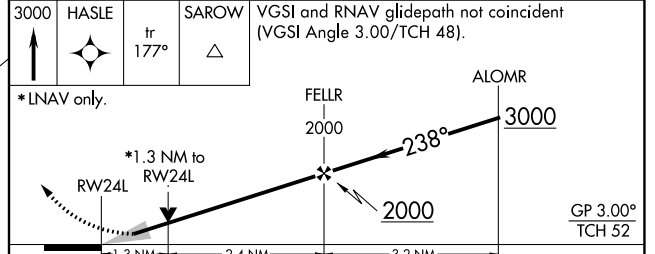
CLEVELAND-HOPKINS INTL (CLE)

RNP APCH. ▼ Circling Rwy 10 NA at night. For uncompensated Baro-VNAV systems, LNAV/VNAV NA below -1°C or above 54°C.		MALSR ☉	MISSED APPROACH: Climb to 3000 direct HASLE and on track 177° to SAROW and hold.		
D-ATIS ARR 127.85 DEP 132.375	CLEVELAND APP CON 126.55 346.325	CLEVELAND TOWER 124.5 273.45	GND CON 121.7 273.45	CLNC DEL 125.05 273.45	CPDLC



ELEV 799	D	TDZE 786
----------	----------	----------

3000	HASLE	SAROW	VGSI and RNAV glidepath not coincident (VGSI Angle 3.00/TCH 48).
↑	☉	△	



CATEGORY	A	B	C	D
LPV DA	986/18 200 (200-½)			
LNAV/VNAV DA	1180/35 394 (400-⅝)			
LNAV MDA	1240/24	454 (500-½)	1240/45	454 (500-⅞)
C CIRCLING	1420-1	621 (700-1)	1420-1¾ 621 (700-1¾)	1420-2 621 (700-2)

REIL Rwy 10
TDZ/CL Rwy 6L, 6R, 24L and 24R
HIRL Rwy 6L-24R, 6R-24L and 10-28

EC-2, 16 MAY 2024 to 13 JUN 2024

EC-2, 16 MAY 2024 to 13 JUN 2024