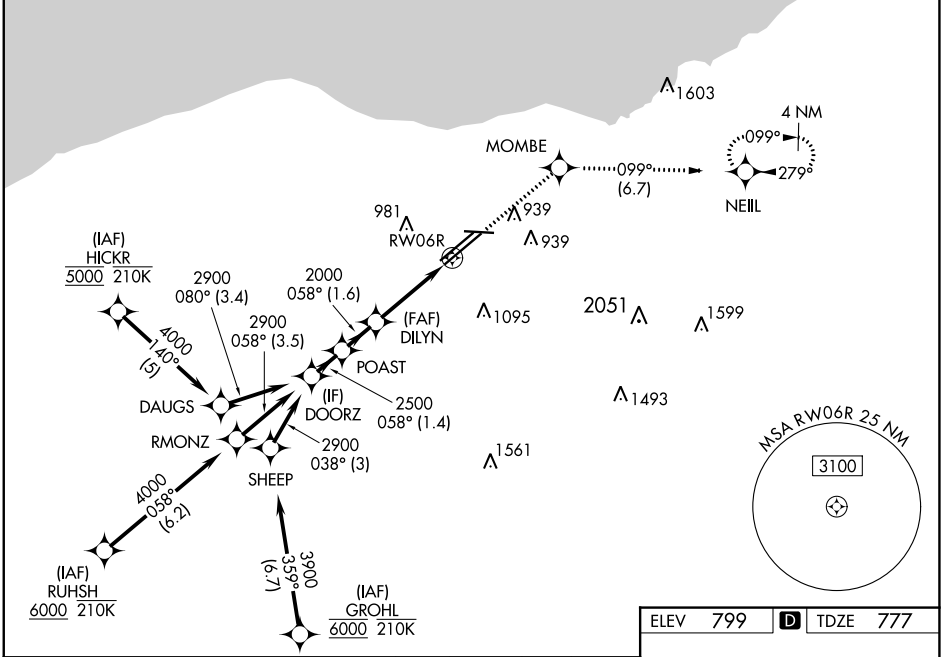


WAAS CH 81806 W06B	APP CRS 058°	Rwy Idg TDZE 777 Apt Elev 799	8029
--	------------------------	---	-------------

RNAV (GPS) Y RWY 6R

CLEVELAND-HOPKINS INTL (CLE)

RNP APCH.		MALSR		MISSED APPROACH: Climb to 3000 direct MOMBE and on track 099° to NEILL and hold.	
<p>▼ For uncompensated Baro-VNAV systems, LNAV/VNAV NA below -18°C (0°F) or above 46°C (114°F). Circling Rwy 10 NA at night. For inop ALS, increase LNAV Cats C/D visibility to 1½ SM.</p>					
D-ATIS ARR 127.85 DEP 132.375	CLEVELAND APP CON 126.55 346.325	CLEVELAND TOWER 124.5 273.45	GND CON 121.7 273.45	CLNC DEL 125.05 273.45	CPDLC



EC-2, 16 MAY 2024 to 13 JUN 2024

EC-2, 16 MAY 2024 to 13 JUN 2024

<p>VGSI and RNAV glidepath not coincident (VGSI Angle 3.00/TCH 73).</p>		3000	MOMBE	tr 099°	NEILL
<p>DOORZ</p>		POAST	DILYN	*LNAV only.	
<p>2900 058°</p>		2500	2000	*1.4 NM to RWY 6R	
<p>GP 3.10°</p>		2000	RWY 6R		
<p>TCH 58</p>		<p>1.4 NM 1.6 NM 2.2 NM 1.4 NM</p>			
CATEGORY	A	B	C	D	
LPV DA	977/18		200 (200-½)		
LNAV/VNAV DA	1227/45		450 (500-¾)		
LNAV MDA	1260/24	483 (500-½)	1260/50	483 (500-1)	
CIRCLING	1420-1	621 (700-1)	1420-1¾ 621 (700-1¾)	1420-2 621 (700-2)	

