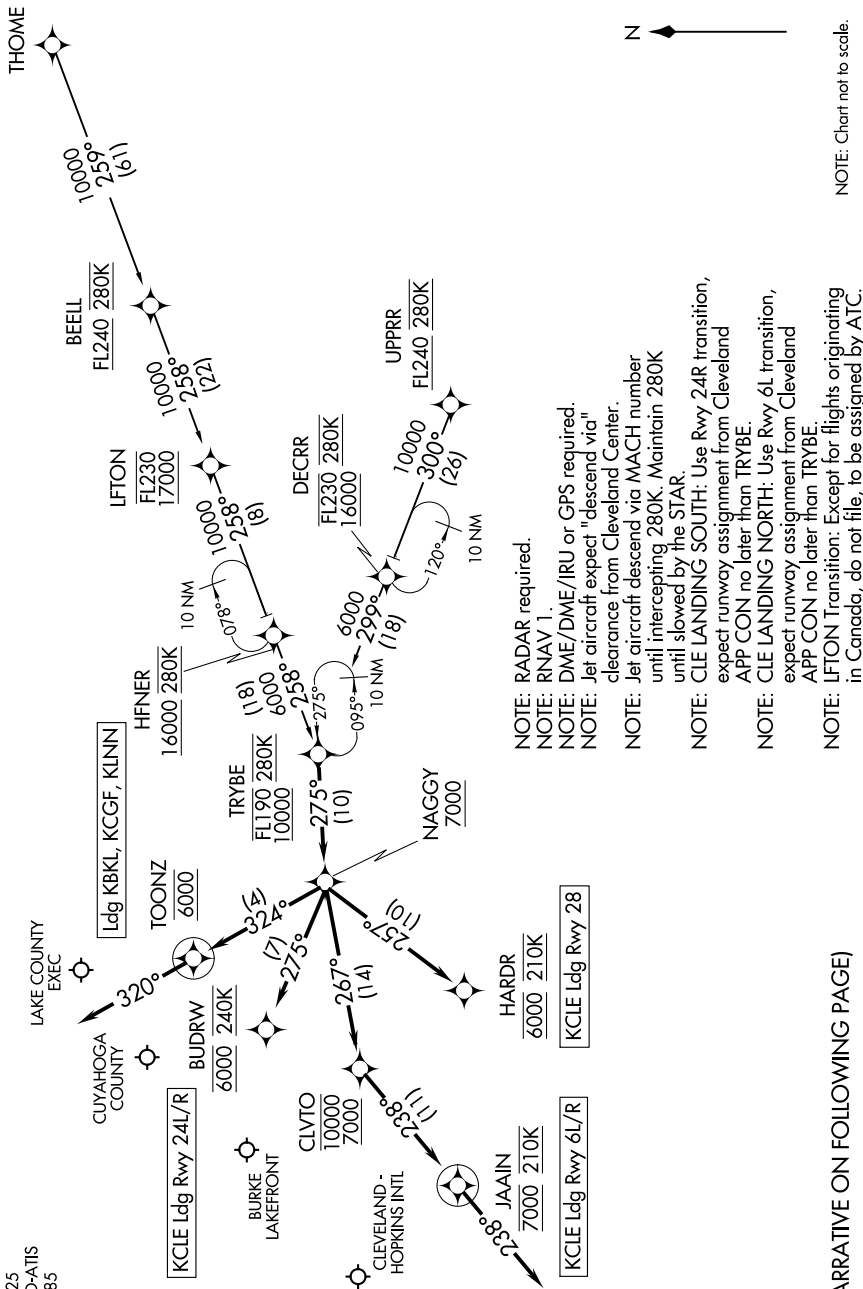


TRYBE FOUR ARRIVAL (RNAV)

CLEVELAND, OHIO

EC-2, 16 MAY 2024 to 13 JUN 2024

CLEVELAND APP CON
 126.55 346.325
 BKJ ATIS
 125.25
 CLE D-ATIS
 127.85



- NOTE: RADAR required.
- NOTE: RNAV 1.
- NOTE: DME/DME/IRU or GPS required.
- NOTE: Jet aircraft expect "descend via" clearance from Cleveland Center.
- NOTE: Jet aircraft descend via MACH number until intercepting 280K. Maintain 280K until slowed by the STAR.
- NOTE: CLE LANDING SOUTH: Use Rwy 24R transition, expect runway assignment from Cleveland APP CON no later than TRYBE.
- NOTE: CLE LANDING NORTH: Use Rwy 6L transition, expect runway assignment from Cleveland APP CON no later than TRYBE.
- NOTE: LFTON Transition: Except for flights originating in Canada, do not file, to be assigned by ATC.

(NARRATIVE ON FOLLOWING PAGE)

NOTE: Chart not to scale.

TRYBE FOUR ARRIVAL (RNAV)

(TRYBE.TRYBE4) 26MAR20

CLEVELAND, OHIO

EC-2, 16 MAY 2024 to 13 JUN 2024