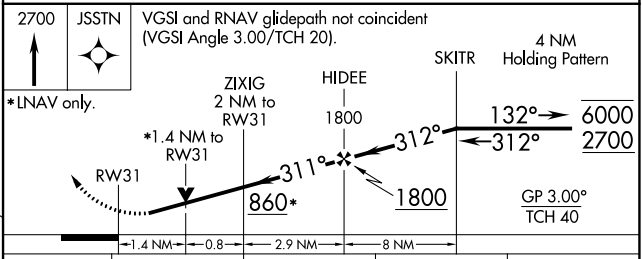
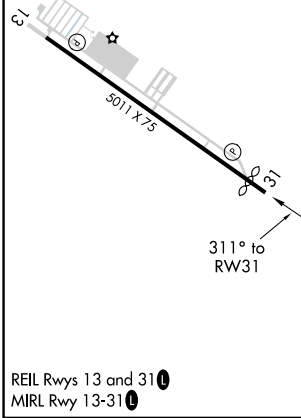
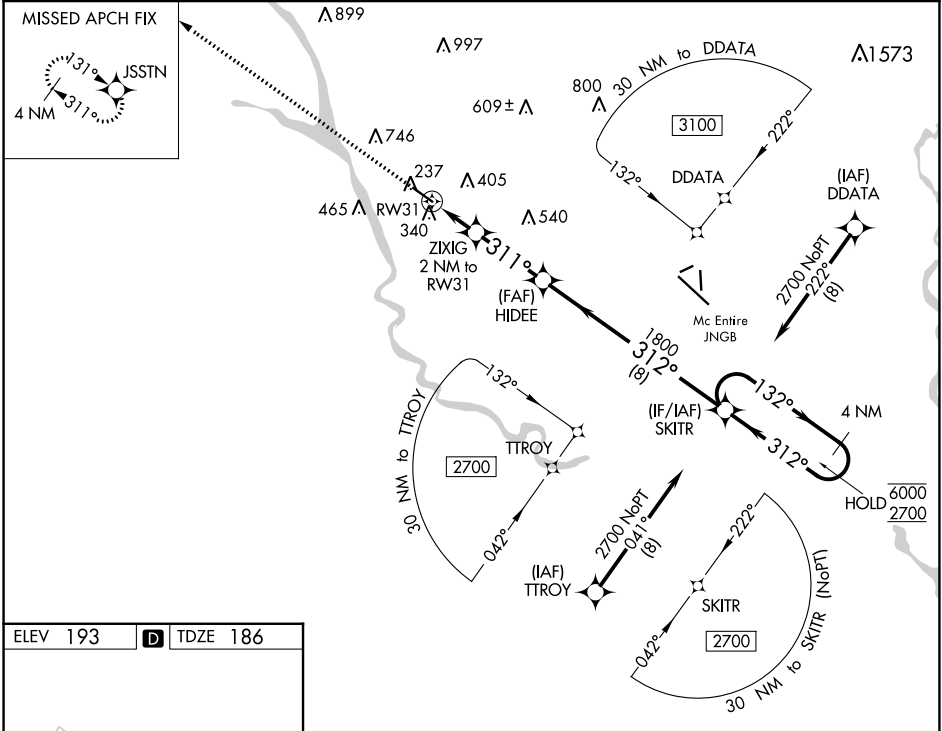


WAAS CH <b>42742</b> <b>W31A</b>	APP CRS <b>311°</b>	Rwy Idg TDZE <b>186</b> Apt Elev <b>193</b>	<b>4599</b>
--	------------------------	---	-------------

# RNAV (GPS) RWY 31

JIM HAMILTON L B OWENS (CUB)

RNP APCH.		MISSED APPROACH: Climb to 2700 direct JSSTN and hold.	
▼ Rwy 31 helicopter visibility reduction below ¾ SM NA. For uncompensated Baro-VNAV systems, LNAV/VNAV NA below -6°C or above 54°C.			
ASOS <b>118.675</b>	COLUMBIA APP CON <b>133.4 285.6</b>	CLNC DEL <b>124.4</b>	UNICOM <b>123.075 (CTAF) 0</b>



CATEGORY	A	B	C	D
LPV DA		436-¾	250 (300-¾)	
LNAV/VNAV DA		551-1	365 (400-1)	
LNAV MDA	640-1	454 (500-1)	640-1¾	454 (500-1¾)

SE-2, 16 MAY 2024 to 13 JUN 2024

SE-2, 16 MAY 2024 to 13 JUN 2024