

METRO THREE DEPARTURE

AL-118 (FAA)

DETROIT, MICHIGAN

EC-1, 16 MAY 2024 to 13 JUN 2024

ATIS 124.875
 GND CON
 121.85
 DETROIT CITY TOWER
 121.3 257.8
 DETROIT DEP CON
 134.3 284.0

TAKEOFF MINIMUMS

Rwys 7, 15, 33: Standard.

Rwy 25: Standard with a minimum climb of 210' per NM to 1000, or alternatively, with standard takeoff minimums and a normal 200' per NM climb gradient; takeoff must occur no later than 1300' prior to departure end of runway.

- NOTE: RADAR required.
 NOTE: DME required.
 NOTE: For use by non-RNAV equipped aircraft only.

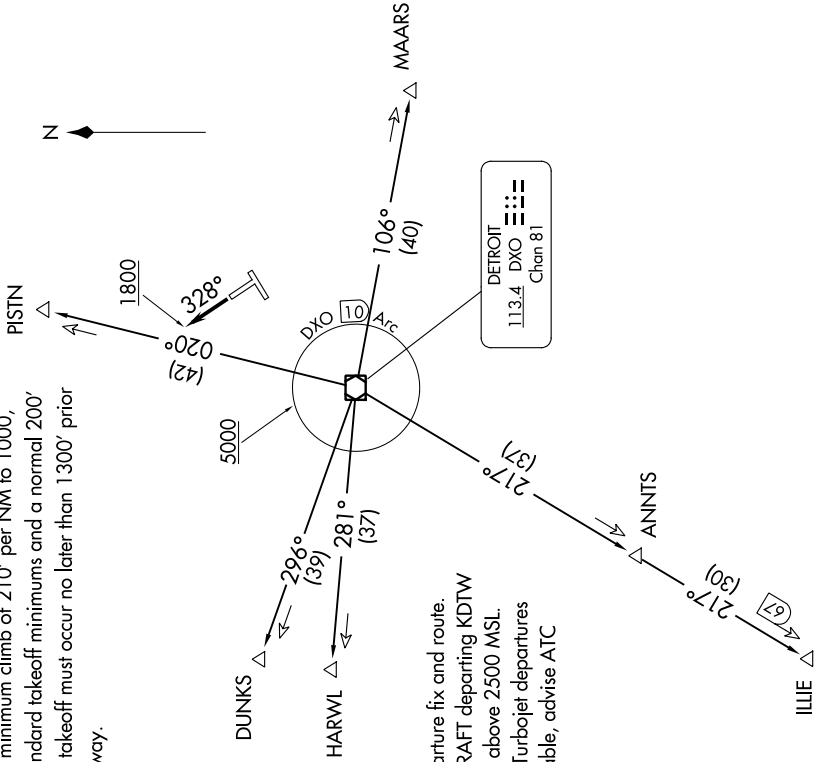
SPECIAL INSTRUCTIONS:

When using this departure, file the appropriate depicted departure fix and route. Aircraft over HARWL must file FL220 and below. PROP AIRCRAFT departing KDTW Rwy 21L/R and 22L/R westbound, cross DXO 3.5 DME at or above 2500 MSL. Aircraft landing Cleveland (CLE) must file MAARS transition. Turbojet departures at/above 10000, maintain 280K until advised by ATC. If unable, advise ATC prior to departure.

(NARRATIVE ON FOLLOWING PAGE)

NOTE: Chart not to scale.

TOP ALTITUDE:
3000



METRO THREE DEPARTURE

EC-1, 16 MAY 2024 to 13 JUN 2024