

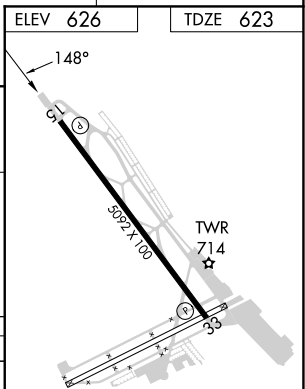
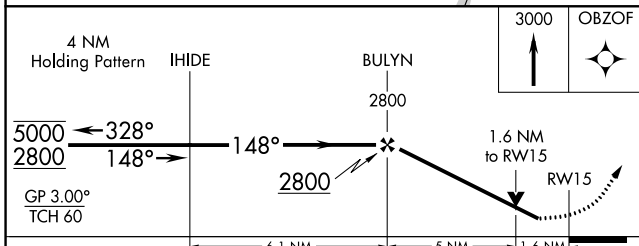
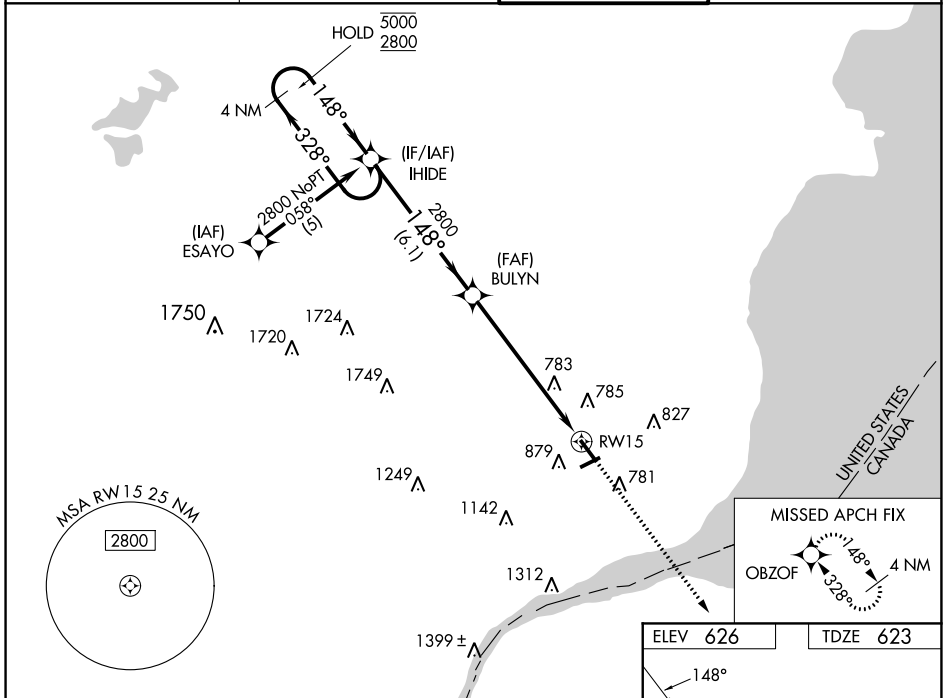
WAAS CH 63211 W15A	APP CRS 148°	Rwy Idg TDZE Apt Elev	5092 623 626
--	------------------------	-----------------------------	---

RNAV (GPS) RWY 15

COLEMAN A YOUNG MUNI (DET)

RNP APCH - GPS.	<p>⚠ Circling to Rwy 7, 25 NA at night. Rwy 15 helicopter visibility reduction below $\frac{3}{4}$ SM NA. For uncompensated Baro-VNAV systems, LNAV/VNAV NA below -16°C or above 54°C.</p>	MISSED APPROACH: Climb to 3000 direct OBZOF and hold.
-----------------	--	---

ATIS 124.875	DETROIT APP CON 134.3 284.0	DETROIT CITY TOWER 121.3 257.8	GND CON 121.85
------------------------	---------------------------------------	--	--------------------------



CATEGORY	A	B	C	D
LPV DA		926- $\frac{7}{8}$	303 (300- $\frac{7}{8}$)	
LNAV/VNAV DA		1078-1 $\frac{3}{8}$	455 (500-1 $\frac{1}{8}$)	
LNAV MDA	1180-1	557 (600-1)	1180-1 $\frac{5}{8}$	557 (600-1 $\frac{1}{8}$)
C CIRCLING	1180-1	554 (600-1)	1320-2 694 (700-2)	1500-2 $\frac{3}{4}$ 874 (900-2 $\frac{3}{4}$)

MIRL Rwy 7-25
HIRL Rwy 15-33
REIL Rwy 15 and 33

EC-1, 16 MAY 2024 to 13 JUN 2024

EC-1, 16 MAY 2024 to 13 JUN 2024