

LOC I-EIU <b>108.3</b>	APP CRS <b>355°</b>	Rwy Idg <b>8613</b>	TDZE <b>1147</b>
		Apt Elev <b>1167</b>	

# ILS or LOC RWY 35

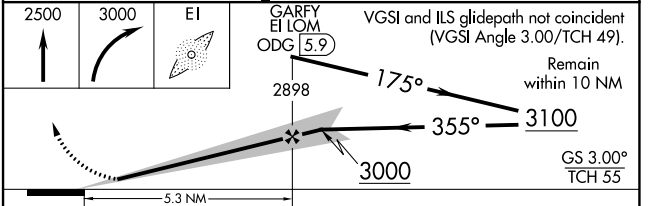
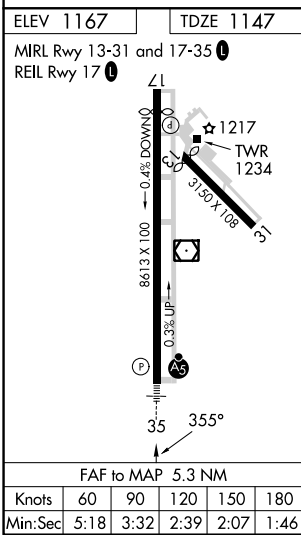
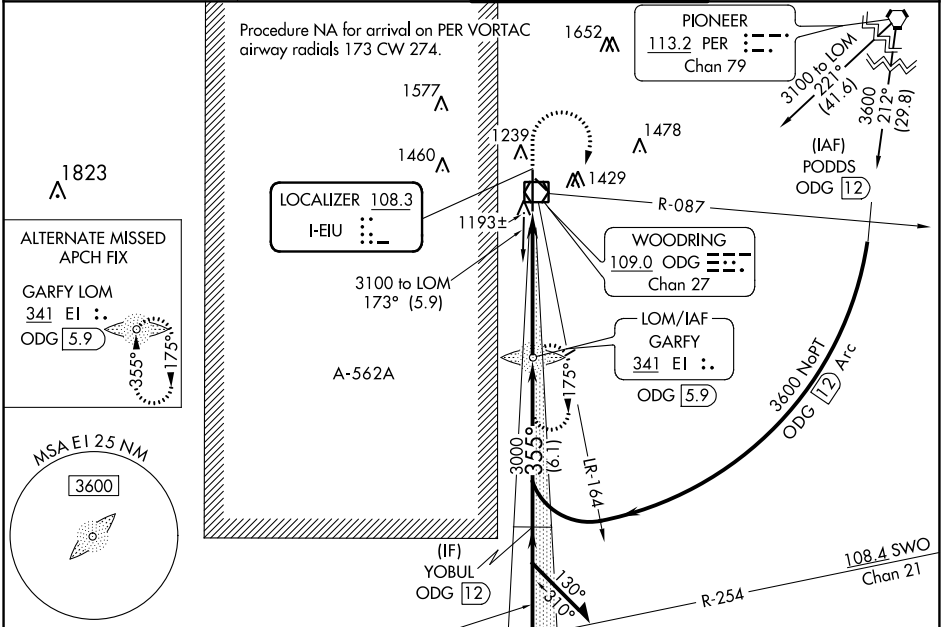
ENID WOODRING RGNL (WDG)

ADF required.

⚠ Circling Rwy 13 NA at night. DME from ODG VOR/DME. Simultaneous reception of I-EIU and ODG VOR/DME required. For inop ALS, increase S-ILS 35 Cat E visibility to ¾ SM, increase S-LOC 35 Cat E visibility to 1¼ SM. Procedure turn NA for Cat E.

MALSR MISSED APPROACH: Climb to 2500 then climbing right turn to 3000 direct GARFY LOM and hold.

AWOS-3PT <b>123.725</b>	VANCE APP CON ★ <b>121.3 346.325</b>	WOODRING TOWER ★ <b>118.9 (CTAF) 0 257.95</b>	GND CON <b>121.925</b>
----------------------------	---	--	---------------------------



CATEGORY	A	B	C	D	E
S-ILS 35	1347-½ 200 (200-½)				
S-LOC 35	1580-½	433 (500-½)	1580-¾ 433 (500-¾)		
<input checked="" type="checkbox"/> CIRCLING	1760-1	593 (600-1)	1820-1¾	1880-2¼	2000-3
			653 (700-1¾)	713 (800-2¼)	833 (900-3)

SC-1, 16 MAY 2024 to 13 JUN 2024

SC-1, 16 MAY 2024 to 13 JUN 2024