

WAAS CH 50213 W17A	APP CRS 175°	Rwy Idg 8002 TDZE 1165 Apt Elev 1167
--	------------------------	---

RNAV (GPS) RWY 17

ENID WOODRING RGNL (WDG)

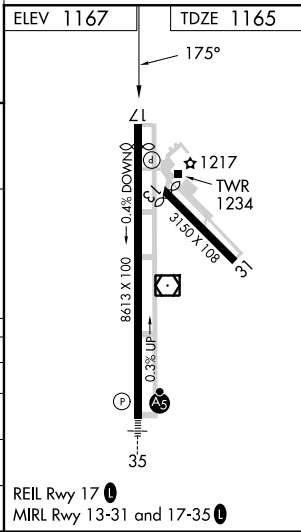
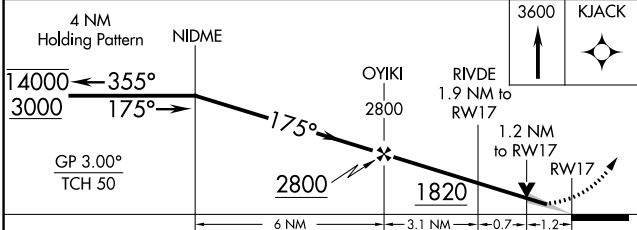
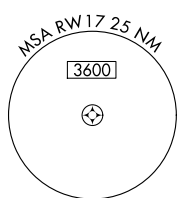
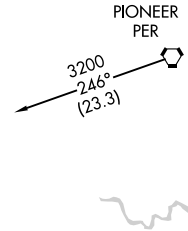
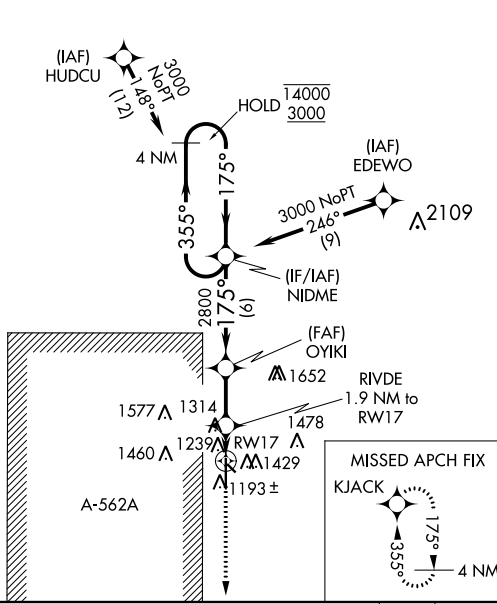
RNP APCH-GPS.

⚠ Circling Rwy 13 NA at night. For uncompensated Baro-VNAV systems, LNAV/VNAV NA below -17°C or above 54°C.

MISSED APPROACH: Climb to 3600 direct KJACK and hold.

AWOS-3PT 123.725	VANCE APP CON ★ 121.3 346.325	WOODRING TOWER ★ 118.9 (CTAF) 0 257.95	GND CON 121.925
----------------------------	---	--	---------------------------

Procedure NA for arrival on PER VORTAC
airway radials 173 CW 335.



	A		B		C		D		E	
LPV DA			1415-3/4		250 (300-3/4)					
LNAV/VNAV DA			1415-3/4		250 (300-3/4)					
LNAV MDA	1580-1 415 (500-1)				1580-1 1/8 415 (500-1 1/8)					
C CIRCLING	1760-1 593 (600-1)		1820-1 3/4 653 (700-1 3/4)		1880-2 1/4 713 (800-2 1/4)		2000-3 833 (900-3)			

REIL Rwy 17 0
MRL Rwy 13-31 and 17-35 0

SC-1, 16 MAY 2024 to 13 JUN 2024

SC-1, 16 MAY 2024 to 13 JUN 2024