


WAAS CH <b>97413</b> <b>W35A</b>	APP CRS <b>355°</b>	Rwy Idg <b>8613</b> TDZE <b>1147</b> Apt Elev <b>1167</b>
----------------------------------------	------------------------	-----------------------------------------------------------------

# RNAV (GPS) RWY 35

ENID WOODRING RGNL (WDG)

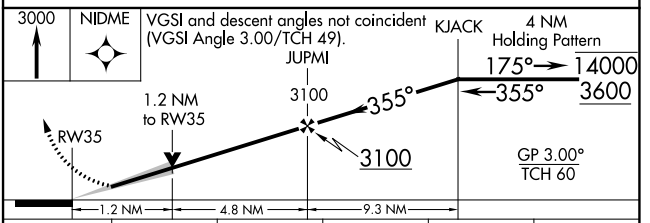
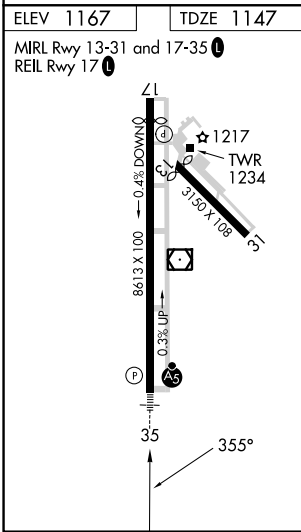
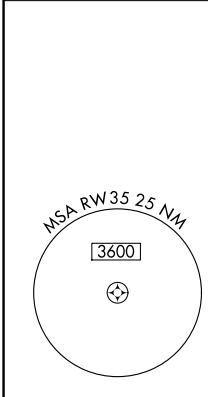
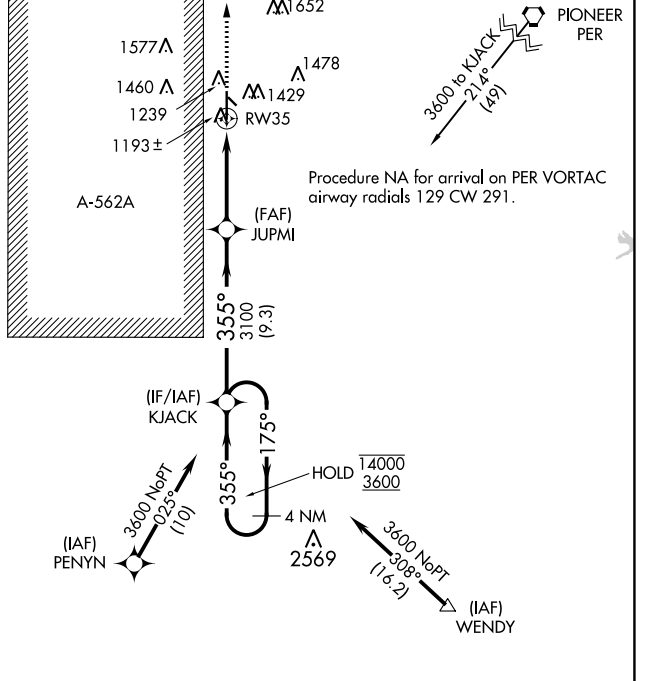
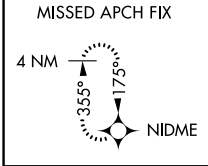
RNP APCH-GPS.

**⚠** Circling Rwy 13 NA at night. For uncompensated Baro-VNAV systems, LNAV/VNAV NA below -17°C or above 54°C. For inop ALS, increase LPV Cat E visibility to ¾ SM, increase LNAV/VNAV all Cats visibility to ¾ SM, increase LNAV Cat E visibility to 1¼ SM.

MALSR 

**MISSED APPROACH:** Climb to 3000 direct NIDME and hold.

AWOS-3PT <b>123.725</b>	VANCE APP CON ★ <b>121.3 346.325</b>	WOODRING TOWER ★ <b>118.9 (CTAF) 0 257.95</b>	GND CON <b>121.925</b>
----------------------------	-----------------------------------------	--------------------------------------------------	---------------------------



CATEGORY	A	B	C	D	E
LPV DA	1347-½		200 (200-½)		
LNAV/VNAV DA	1397-½		250 (300-½)		
LNAV MDA	1580-½ 433 (500-½)		1580-¾ 433 (500-¾)		
<b>C</b> CIRCLING	1760-1 593 (600-1)		1820-1¾ 653 (700-1¾)	1880-2¼ 713 (800-2¼)	2000-3 833 (900-3)

SC-1, 16 MAY 2024 to 13 JUN 2024

SC-1, 16 MAY 2024 to 13 JUN 2024