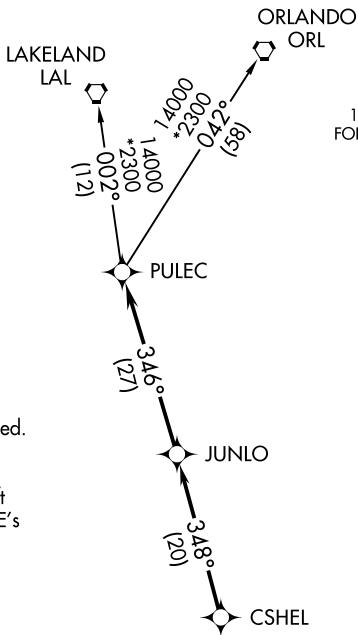


# CSHEL SIX DEPARTURE (RNAV)

**TOP ALTITUDE:  
2000**

ATIS 123.725  
 CLNC DEL 121.7  
 GND CON 121.7  
 PAGE TOWER \*  
 119.0 (CTAF) 306.95  
 FORT MYERS DEP CON \*  
 126.8 306.2



- NOTE: RADAR required.
- NOTE: DME/DME/IRU or GPS required.
- NOTE: RNAV 1.
- NOTE: For turbojet aircraft only.
- NOTE: For non-GPS equipped aircraft LAL, LBV, RSW, and SRQ DME's must be operational.

TAKEOFF MINIMUMS  
 Rwys 5, 13, 23, 31: Standard.



NOTE: Chart not to scale.



## DEPARTURE ROUTE DESCRIPTION

TAKEOFF ALL RWYS: Climb on assigned heading for RADAR vectors to CSHEL, then on depicted route to PULEC, thence. . . .

. . . . on (transition). Maintain 2000, or as assigned by ATC, expect filed altitude/flight level 10 minutes after departure.

LAKELAND TRANSITION (CSHEL6.LAL)  
ORLANDO TRANSITION (CSHEL6.ORL)