

WAAS CH 69424 W23A	APP CRS 231°	Rwy Idg TDZE Apt Elev	5548 16 17
--	------------------------	-----------------------------	---------------------------------------

RNAV (GPS) RWY 23

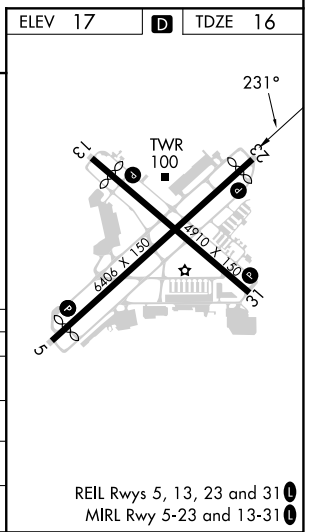
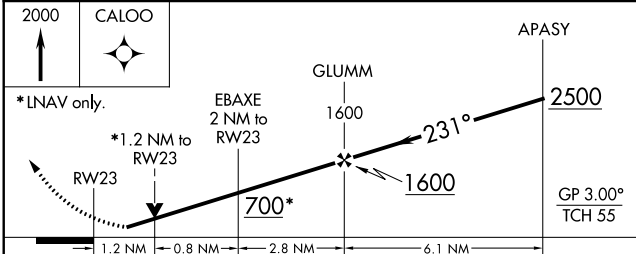
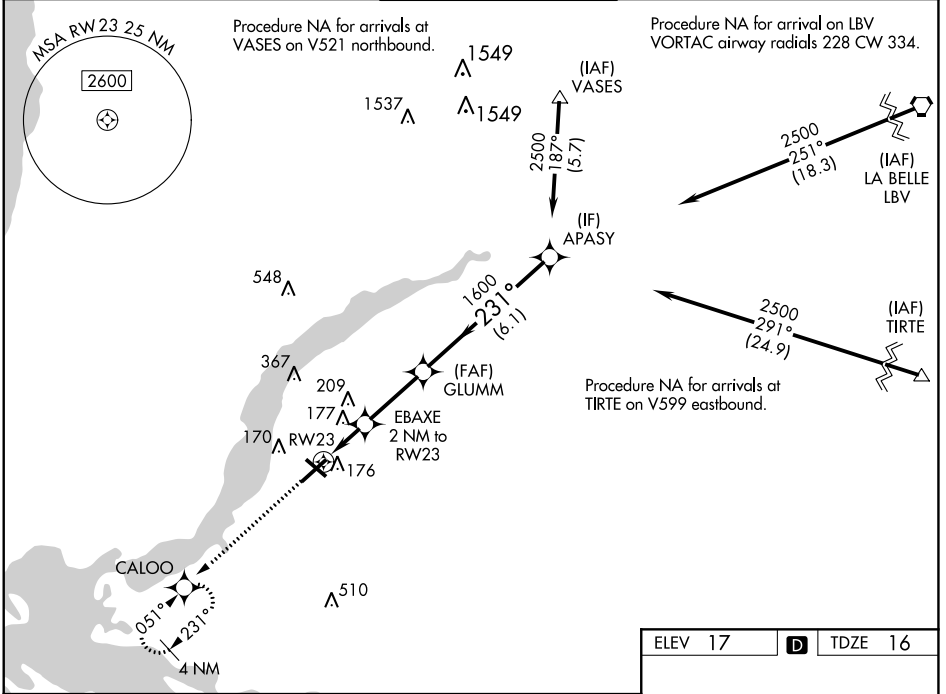
PAGE FLD (FMY)

RNP APCH.

When Circling to Rwy 31 at night, operational VGSI required, remain on or above VGSI glidepath until threshold. Rwy 23 helicopter visibility reduction below 3/4 SM NA. For uncompensated Baro-VNAV systems, LNAV/VNAV NA below 4°C or above 54°C.

MISSED APPROACH: Climb to 2000 direct CALOO and hold.

ATIS 123.725	FORT MYERS APP CON ★ 125.15 306.2 (Rwys 5, 13) 126.8 306.2 (Rwys 23, 31)	PAGE TOWER ★ 119.0 (CTAF) 0 306.95	GND CON 121.7	CLNC DEL 121.7
------------------------	--	---	-------------------------	--------------------------



CATEGORY	A	B	C	D
LPV DA	274-3/4		258 (300-3/4)	
LNAV/VNAV DA	377-1		361 (400-1)	
LNAV MDA	440-1 424 (500-1)		440-1 1/4 424 (500-1 1/4)	
CIRCLING	540-1 523 (600-1)		600-1 1/2 583 (600-1 1/2) 680-2 663 (700-2)	

SE-3, 16 MAY 2024 to 13 JUN 2024

SE-3, 16 MAY 2024 to 13 JUN 2024