

HI-ILS Y or LOC Y RWY 36

FORT WORTH NAS JRB (CARSWELL FLD) (KNFW)

LOC I-FWH 109.3	APCH CRS 357°	Rwy ldg 11,999 TDZE 650 Arpt Elev 650
---------------------------	-------------------------	--

[USN]

TACAN required.
 ▼ * When ALS inop, increase vis to 3/4 mile.
 ** When ALS inop, increase vis to 1 1/2 miles.
 *** When ALS inop, increase vis to 1 3/8 miles.



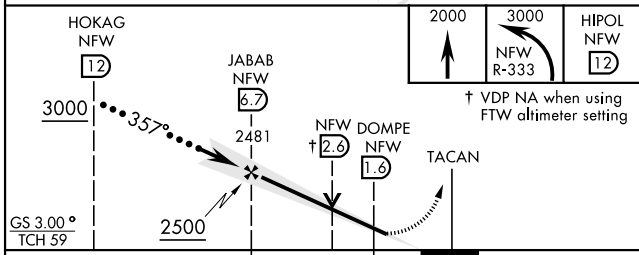
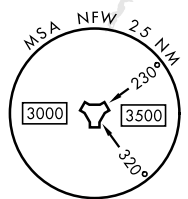
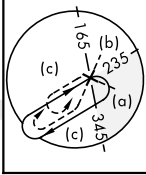
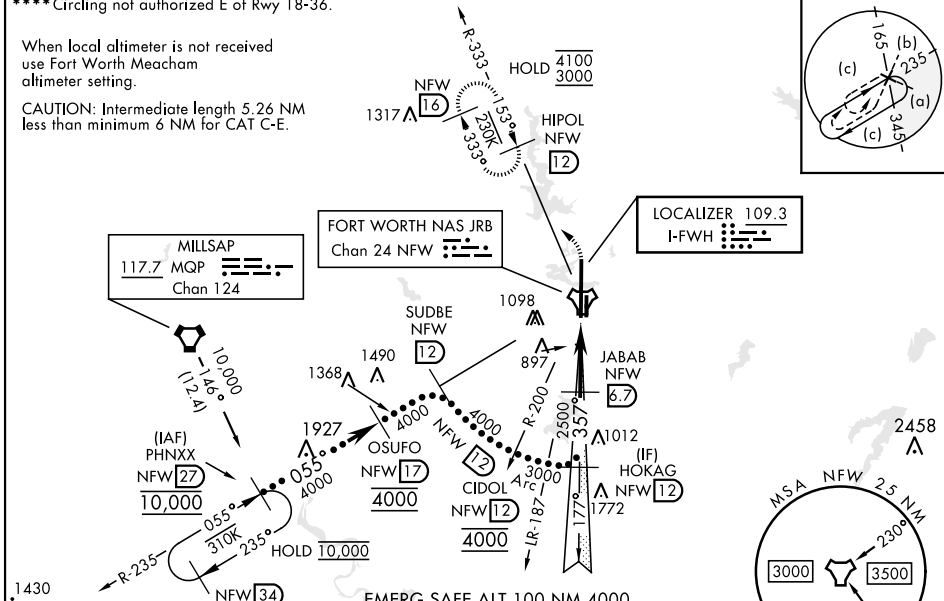
MISSED APPROACH: Climb to 2000, then climbing left turn to 3000 to intercept NFW TACAN R-333 to HIPOL and hold.

ATIS* 351.675	REGIONAL APP CON 125.8 257.95	NAVY FORT WORTH TOWER* 120.95 269.325	GND CON 121.675 279.575	CLNC DEL 126.4 254.325	ASR/PAR
-------------------------	---	---	-----------------------------------	----------------------------------	---------

****Circling not authorized E of Rwy 18-36.

When local altimeter is not received use Fort Worth Meacham altimeter setting.

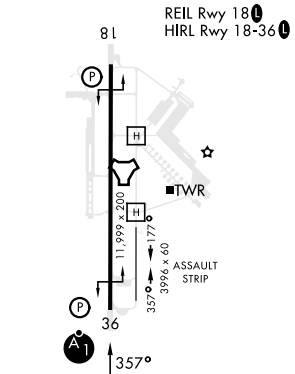
CAUTION: Intermediate length 5.26 NM less than minimum 6 NM for CAT C-E.



2000	3000	HIPOL NFW (12)
------	------	----------------

† VDP NA when using FTW altimeter setting

ELEV 650	TDZE 650
----------	----------



CATEGORY	C	D	E
S-ILS 36*	850-1/2	200	(200-1/2)
S-LOC 36**	1180-1	530	(600-1)
**** CIRCLING	1320-1 3/4 670 (700-1 3/4)	1340-2 1/4 690 (700-2 1/4)	1440-2 3/4 790 (800-2 3/4)
FORT WORTH MEACHAM ALTIMETER			
S-ILS 36*	870-1/2	220	(300-1/2)
S-LOC 36***	1200-1 1/8	550	(600-1 1/8)
**** CIRCLING	1340-2 690 (700-2)	1360-2 1/4 710 (800-2 1/4)	1460-2 3/4 810 (900-2 3/4)

FAF to MAP 5.2 NM					
Knots	120	140	160	180	200
Min:Sec	2:33	2:11	1:55	1:42	1:32

FORT WORTH, TEXAS 32° 46' N-97° 26' W FORT WORTH NAS JRB (CARSWELL FLD) (KNFW)

Orig 18MAY23

HI-ILS Y or LOC Y RWY 36

SC-2, 16 MAY 2024 TO 13 JUN 2024

SC-2, 16 MAY 2024 TO 13 JUN 2024