

REGIONAL DEP CON  
125.8 257.95  
ATIS \*  
351.675  
CLNC DEL  
126.4 254.325  
GND CON  
121.675 279.575  
NAVY FORT WORTH TOWER \*  
120.95 269.325

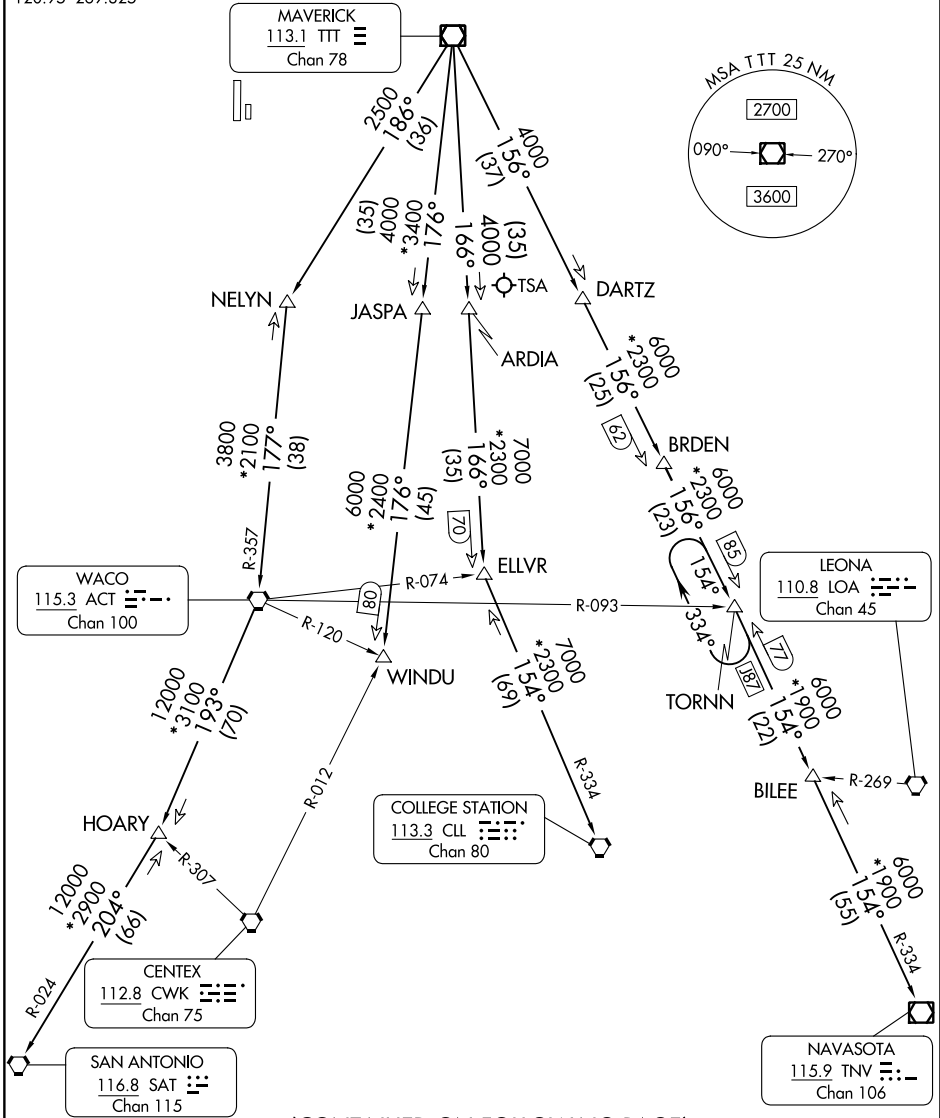
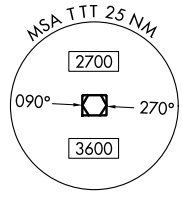
RADAR and DME required.

**TOP ALTITUDE:  
ASSIGNED BY ATC**

**TAKEOFF MINIMUMS**

Refer to appropriate military service directives.

**MAVERICK**  
113.1 TTT  
Chan 78



SC-2, 16 MAY 2024 to 13 JUN 2024

SC-2, 16 MAY 2024 to 13 JUN 2024

(CONTINUED ON FOLLOWING PAGE)

NOTE: Chart not to scale.