

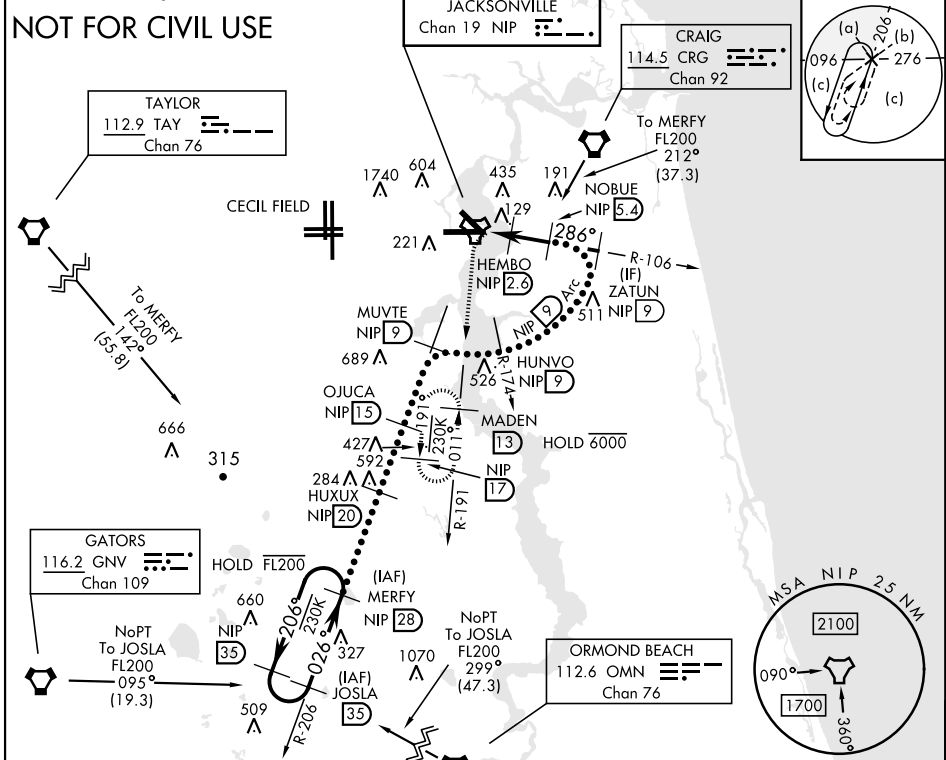
HI-TACAN Z RWY 28

TACAN Chan 19	NIP	APCH CRS 286°	Rwy ldg TDZE Arpt Elev 9003 13 23	[USN]	JACKSONVILLE NAS (TOWERS FLD)	(KNIP)
-------------------------	-----	-------------------------	---	-------	-------------------------------	--------

* When ALS inop, increase CAT CDE vis to 1½ miles.
 SALSF
 MISSED APPROACH: Climb to 2000 direct NIP TACAN and turn left outbound R-191 to MADEN and hold.

ATIS 124.35 290.425	APP CON 127.775 377.075	NAVY JACKSONVILLE TOWER 125.15 (CTAF) 340.2	GND CON 128.6 336.4	CLNC DEL 134.775 0353.675	ASR/ PAR
-------------------------------	-----------------------------------	---	-------------------------------	-------------------------------------	-------------

CAUTION: Inmed seg len 3.6 NM.



EMERG SAFE ALT 100 NM 2800			ELEV 23	TDZE 13
2000 NIP	MADEN NIP 13	MERYF R-206	Rwy 10 ldg 8006'	Rwy 14 ldg 3244'
TACAN	HEMBO NIP 2.3	NOBUE NIP 5.4	MERYF R-206	FL200
GRUEN NIP 1.1	ZATUN R-106	HUNVO R-174	MUVTE R-206	OJUCA NIP 15
0.5	1.5 NM	2.8 NM	8000	13,000
CATEGORY	C	D	E	
S-28 *		400-7/8	387 (400-7/8)	
CIRCLING	560-1½ 537 (600-1½)	780-2½ 757 (800-2½)	980-3 957 (1000-3)	
HIRL Rwy 10-28				

HI-TACAN Z RWY 28

SE-3, 16 MAY 2024 to 13 JUN 2024

SE-3, 16 MAY 2024 to 13 JUN 2024