

JACKSONVILLE, FLORIDA

# RNAV (RNP) Y RWY 10

APCH CRS	Rwy ldg	<b>8006</b>
<b>096°</b>	TDZE	<b>21</b>
	Arprt Elev	<b>23</b>

- (USN)

JACKSONVILLE NAS (TOWERS FLD) (KNIP)

RNP AR APCH - RF required.



MISSED APPROACH: Climb to 600 then climbing right turn to 2000 direct MADEN and hold.

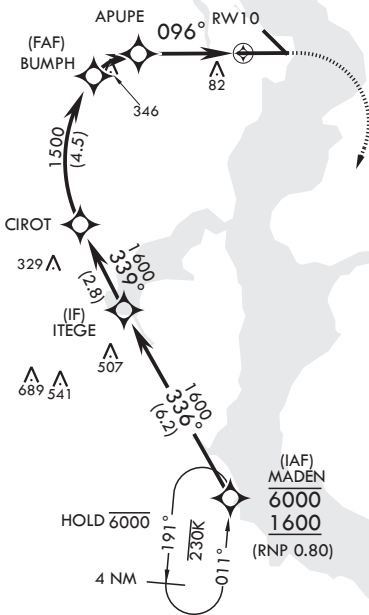
▼ \* When ALS inop increase vis to 1 mile.

ATIS	APP CON/DEP CON	TOWER	GND CON	CLNC DEL	ASR/PAR
<b>124.35 290.425</b>	<b>127.775 377.075</b>	<b>125.15 (CTAF) 340.2</b>	<b>128.6 336.4</b>	<b>134.775 353.675</b>	

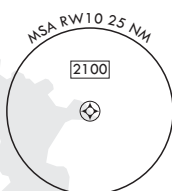
For uncompensated Baro-VNAV systems, procedure NA below -15°C (5°F) or above 54°C (130°F).



1074

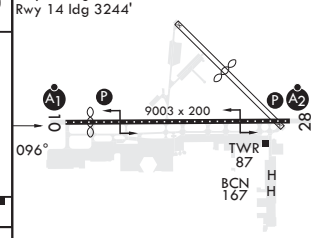


## AUTHORIZATION REQUIRED



<sup>306</sup> EMERG SAFE ALT 100 NM 2800

MADEN	ITEGE	CIROT	BUMPH	APUPE	RWY 10
6000 1600	336° 1600	339° 1600	1500	1027	096°
GP 3.00° TCH 51		1500		1.5 NM → 3 NM	
ELEV 23		MADEN		ELEV 23	
TDZE 21		Rwy 10 ldg 8006'		Rwy 14 ldg 3244'	
CATEGORY		A		B	
RNP 0.30 DA*		389-5/8		368	
				(400-5/8)	
HIRL Rwy 10-28					



JACKSONVILLE, FLORIDA  
Amdt 2 03NOV22

30°14'N - 81°41'W

JACKSONVILLE NAS (TOWERS FLD) (KNIP)

# RNAV (RNP) Y RWY 10

SE-3, 16 MAY 2024 to 13 JUN 2024

SE-3, 16 MAY 2024 to 13 JUN 2024