

JACKSONVILLE, FLORIDA

RNAV (GPS) Z RWY 28

WAAS CH 46924 W28A	APCH CRS 276°	Rwy ldg 9003 TDZE 13 Arpt Elev 23
---------------------------------	-------------------------	--

-(USN)

JACKSONVILLE NAS (TOWERS FLD) (KNIP)

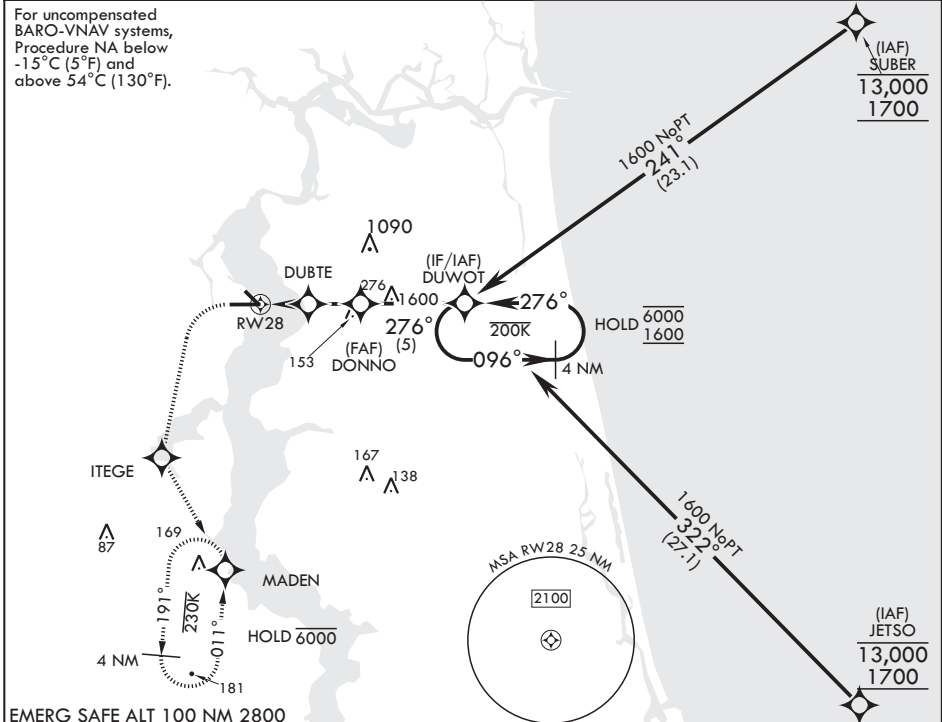
RNP APCH

▼ * When ALS inop, increase CAT BCD to 7/8 mile.
 ** When ALS inop, increase CAT AB vis to 1 mile, CAT CD vis to 1 1/8 miles.

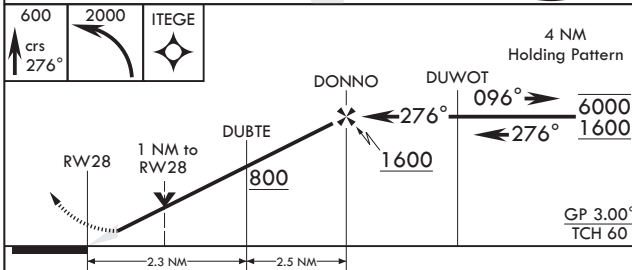
SALS
 MISSED APPROACH: Climb to 600 then climbing left turn to 2000 direct ITEGE, track 156° to MADEN and hold.

ATIS 124.35 290.425	APP CON/DEP CON 127.775 377.075	TOWER 125.15 (CTAF) 340.2	GND CON 128.6 336.4	CLNC DEL 134.775 353.675	ASR/PAR
-------------------------------	---	-------------------------------------	-------------------------------	------------------------------------	---------

For uncompensated
 BARO-VNAV systems,
 Procedure NA below
 -15°C (5°F) and
 above 54°C (130°F).

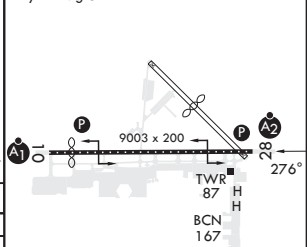


EMERG SAFE ALT 100 NM 2800



ELEV 23	TDZE 13
----------------	----------------

Rwy 10 ldg 8006'
 Rwy 14 ldg 3244'



CATEGORY	A		B		C		D
LPV DA	213-3/4		200		(200-3/4)		
LNAV/VNAV DA*	263-3/4 250 (300-3/4)	274-3/4 261 (300-3/4)	282-3/4 269 (300-3/4)	293-3/4 280 (300-3/4)			
LNAV MDA**	400-3/4	387 (400-3/4)	400-1/8	387 (400-1/8)			
Ⓢ CIRCLING	500-1	477 (500-1)	560-1 1/2 537 (600-1 1/2)	780-2 1/2 757 (800-2 1/2)	HIRL Rwy 10-28		

JACKSONVILLE, FLORIDA

30°14'N - 81°41'W

JACKSONVILLE NAS (TOWERS FLD) (KNIP)

Amdt 1 03NOV22

RNAV (GPS) Z RWY 28

SE-3, 16 MAY 2024 to 13 JUN 2024

SE-3, 16 MAY 2024 to 13 JUN 2024