

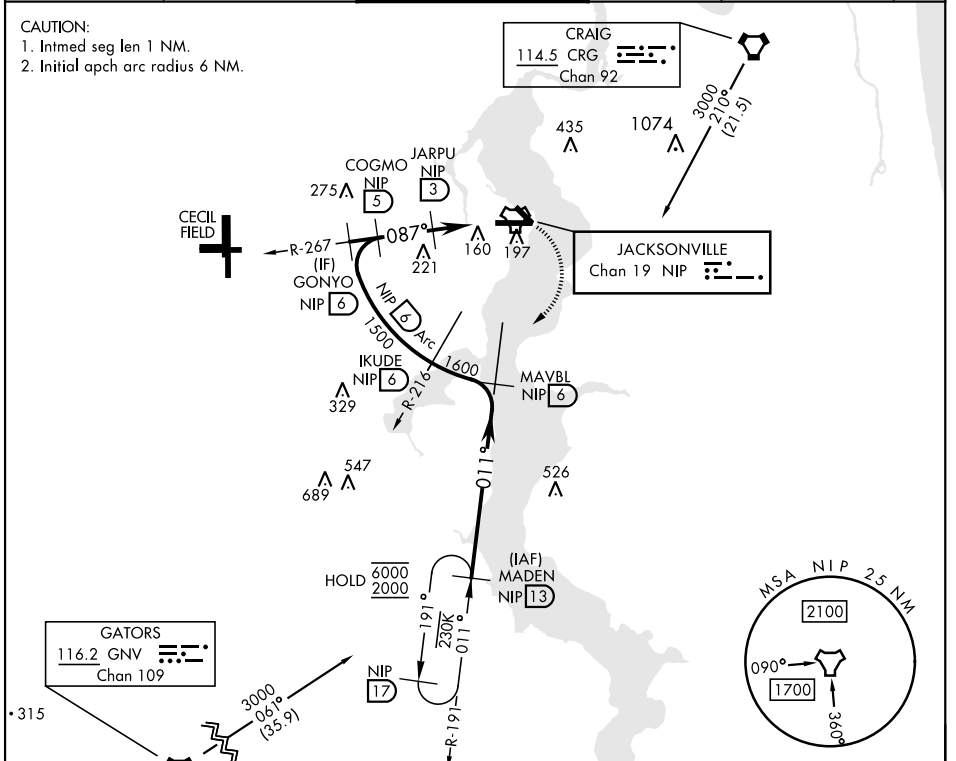
# TACAN Y RWY 10

TACAN NIP Chan <b>19</b>	APCH CRS <b>087°</b>	Rwy ldg TDZE <b>21</b> Arprt Elev <b>23</b>	[USN]	JACKSONVILLE NAS (TOWERS FLD) (KNIP)
--------------------------	----------------------	--	-------	--------------------------------------

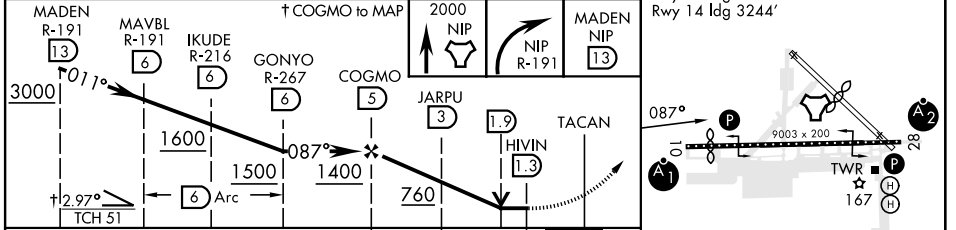
\* When ALS inop, increase CAT AB vis to 1 mile, CAT CD vis to 1½ miles.
 

 ALSF-1  
 MISSED APPROACH: Climb to 2000 direct NIP TACAN and turn right outbound R-191 to MADEN and hold.

ATIS <b>124.35 290.425</b>	APP CON <b>127.775 377.075</b>	NAVY JACKSONVILLE TOWER <b>125.15 (CTAF) 340.2</b>	GND CON <b>128.6 336.4</b>	CLNC DEL <b>134.775 353.675</b>	ASR/PAR
-------------------------------	-----------------------------------	---	-------------------------------	------------------------------------	---------



EMERG SAFE ALT 100 NM 2800	ELEV <b>23</b>	TDZE <b>21</b>
----------------------------	----------------	----------------



CATEGORY	A	B	C	D
S-10 *	420-½ 399 (400-½)		420-¾ 399 (400-¾)	
CIRCLING	500-1 477 (500-1)		560-1½ 537 (600-1½)	780-2½ 757 (800-2½)

HIRL Rwy 10-28

# TACAN Y RWY 10

SE-3, 16 MAY 2024 to 13 JUN 2024

SE-3, 16 MAY 2024 to 13 JUN 2024