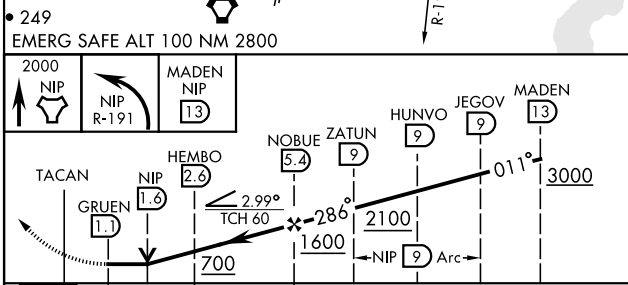
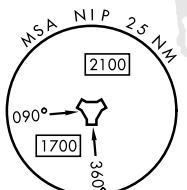
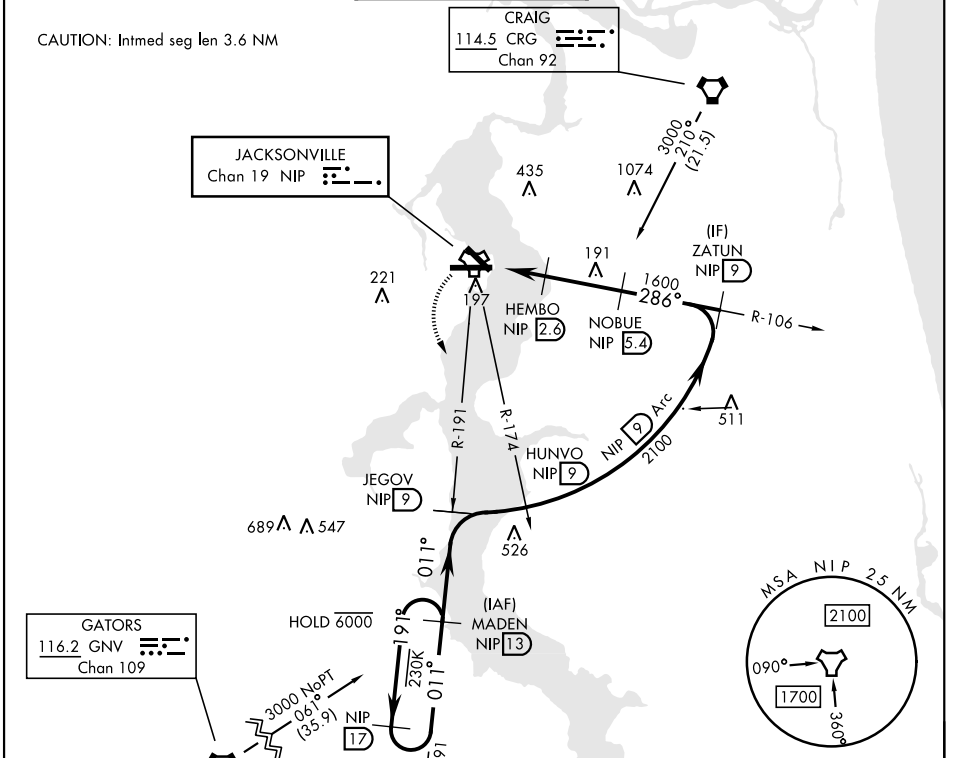


TACAN Y RWY 28

TACAN NIP Chan 19	APCH CRS 286°	Rwy ldg TDZE Arprt Elev 9003 13 23	[USN]	JACKSONVILLE NAS (TOWERS FLD)	(KNIP)
▼ *When ALS inop, increase CAT AB vis to 1 mile, CAT CD vis to 1½ miles.			SALSF 	MISSED APPROACH: Climb to 2000 direct NIP TACAN and turn left outbound R-191 to MADEN and hold.	
ATIS 124.35 290.425	APP CON 127.775 377.075	NAVY JACKSONVILLE TOWER 125.15 (CTAF) 340.2	GND CON 128.6 336.4	CLNC DEL 134.775 0353.675	ASR/PAR

CAUTION: Intmed seg len 3.6 NM



ELEV 23	TDZE 13
Rwy 10 ldg 8006'	
Rwy 14 ldg 3244'	

HIRL Rwy 10-28

CATEGORY	A	B	C	D
S-28*	400-¾ 387 (400-¾)		400-⅞ 387 (400-⅞)	
CIRCLING	500-1 477 (500-1)		560-1½ 537 (600-1½)	780-2½ 757 (800-2½)

TACAN Y RWY 28

SE-3, 16 MAY 2024 to 13 JUN 2024

SE-3, 16 MAY 2024 to 13 JUN 2024