

KAYOH EIGHT ARRIVAL

AL-236 (FAA)

LONG BEACH, CALIFORNIA

SW-3, 16 MAY 2024 to 13 JUN 2024

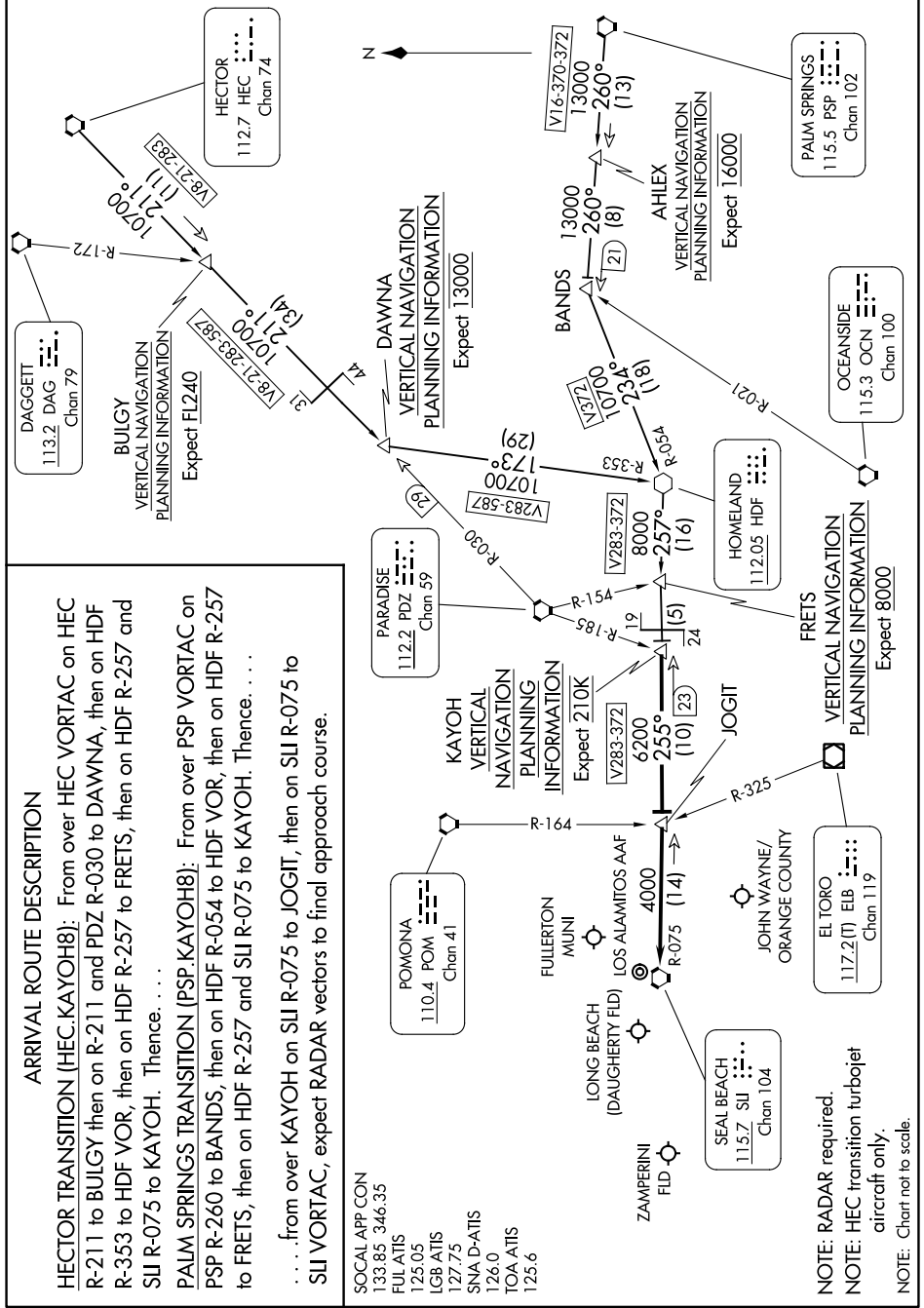
ARRIVAL ROUTE DESCRIPTION

HECTOR TRANSITION (HEC.KAYOH8): From over HEC VORTAC on HEC R-211 to BULGY then on R-211 and PDZ R-030 to DAWNA, then on HDF R-353 to HDF VOR, then on HDF R-257 to FRETS, then on HDF R-257 and SUJ R-075 to KAYOH. Thence. . . .

PALM SPRINGS TRANSITION (PSP.KAYOH8): From over PSP VORTAC on PSP R-260 to BANDS, then on HDF R-054 to HDF VOR, then on HDF R-257 to FRETS, then on HDF R-257 and SUJ R-075 to KAYOH. Thence. . . .

. . . . from over KAYOH on SUJ R-075 to JOGIT, then on SUJ R-075 to SUJ VORTAC, expect RADAR vectors to final approach course.

- SOCAL APP CON
133.85 346.35
- FUL ATIS
125.05
- LGB ATIS
127.75
- SNA D-ATIS
126.0
- TOA ATIS
125.6



NOTE: RADAR required.
NOTE: HEC transition turbojet aircraft only.
NOTE: Chart not to scale.

SW-3, 16 MAY 2024 to 13 JUN 2024

KAYOH EIGHT ARRIVAL

LONG BEACH, CALIFORNIA