

# KIMMO THREE ARRIVAL

AL-237 (FAA)

LOS ANGELES, CALIFORNIA

SOCAL APP CON  
 119.85 306.9  
 LAX D-ATIS ARR  
 133.8  
 SMO ATIS  
 119.15

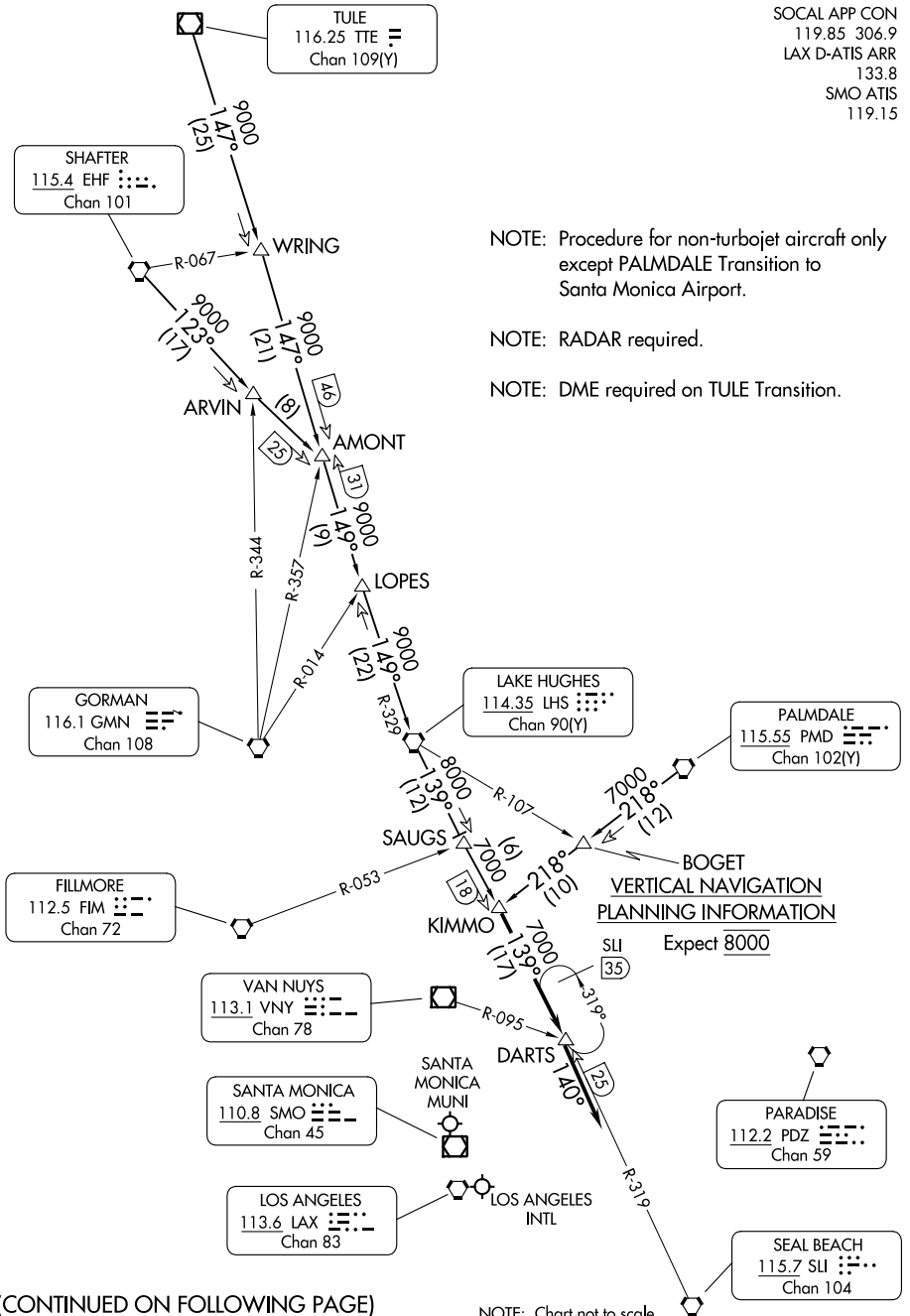
NOTE: Procedure for non-turbojet aircraft only  
 except PALMDALE Transition to  
 Santa Monica Airport.

NOTE: RADAR required.

NOTE: DME required on TULE Transition.

SW-3, 16 MAY 2024 to 13 JUN 2024

SW-3, 16 MAY 2024 to 13 JUN 2024



(CONTINUED ON FOLLOWING PAGE)

NOTE: Chart not to scale.

# KIMMO THREE ARRIVAL

LOS ANGELES, CALIFORNIA