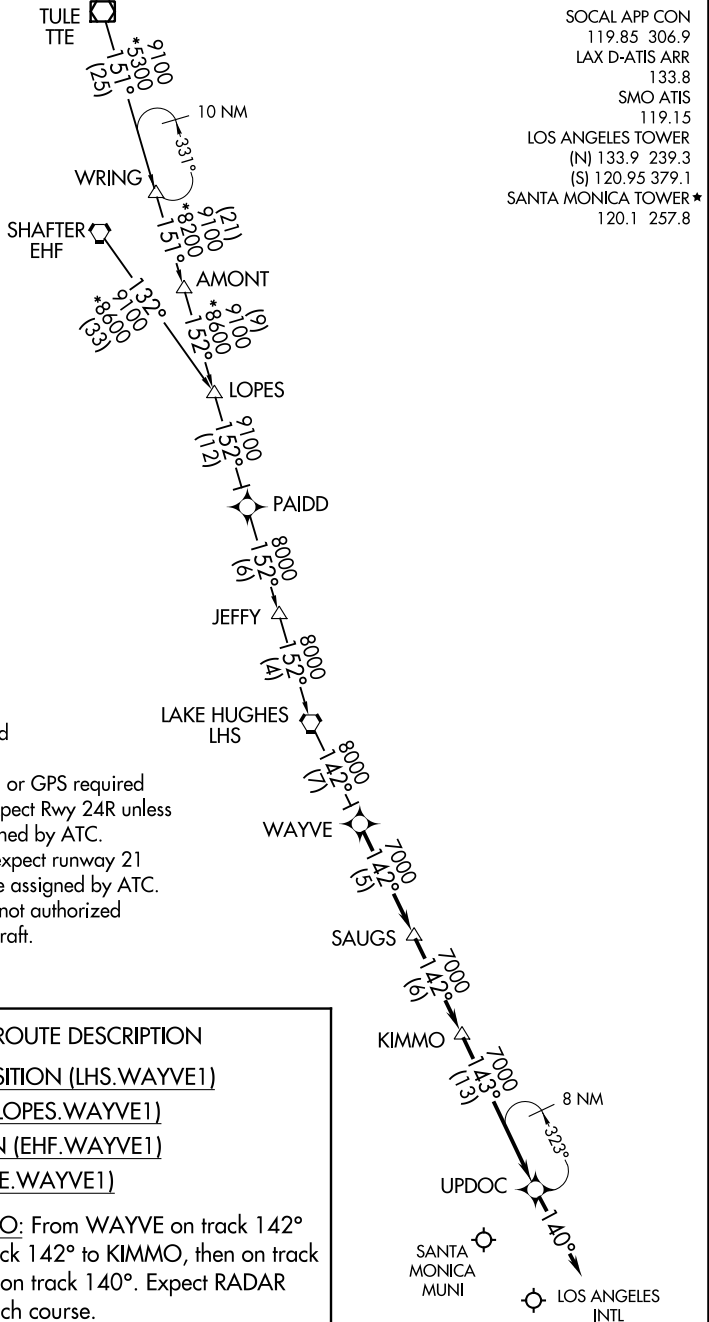


(WAYVE.WAYVE1) 21168

WAYVE ONE ARRIVAL (RNAV) AL-237 (FAA)

LOS ANGELES, CALIFORNIA



SOCAL APP CON
 119.85 306.9
 LAX D-ATIS ARR
 133.8
 SMO ATIS
 119.15
 LOS ANGELES TOWER
 (N) 133.9 239.3
 (S) 120.95 379.1
 SANTA MONICA TOWER*
 120.1 257.8

- NOTE: RADAR required
- NOTE: RNAV 1
- NOTE: DME/DME/IRU or GPS required
- NOTE: Landing LAX expect Rwy 24R unless otherwise assigned by ATC.
- NOTE: Landing SMO expect runway 21 unless otherwise assigned by ATC.
- NOTE: This procedure not authorized for turbojet aircraft.

NOTE: Chart not to scale.

ARRIVAL ROUTE DESCRIPTION

LAKE HUGHES TRANSITION (LHS.WAYVE1)

LOPES TRANSITION (LOPES.WAYVE1)

SHAFTER TRANSITION (EHF.WAYVE1)

TULE TRANSITION (TTE.WAYVE1)

LANDING KLAX/KSMO: From WAYVE on track 142° to SAUGS, then on track 142° to KIMMO, then on track 143° to UPDOC, then on track 140°. Expect RADAR vectors to final approach course.

WAYVE ONE ARRIVAL (RNAV)

(WAYVE.WAYVE1) 10NOV16

LOS ANGELES, CALIFORNIA

SW-3, 16 MAY 2024 to 13 JUN 2024

SW-3, 16 MAY 2024 to 13 JUN 2024