

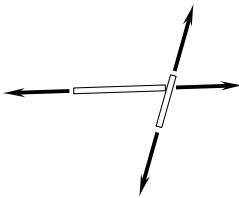
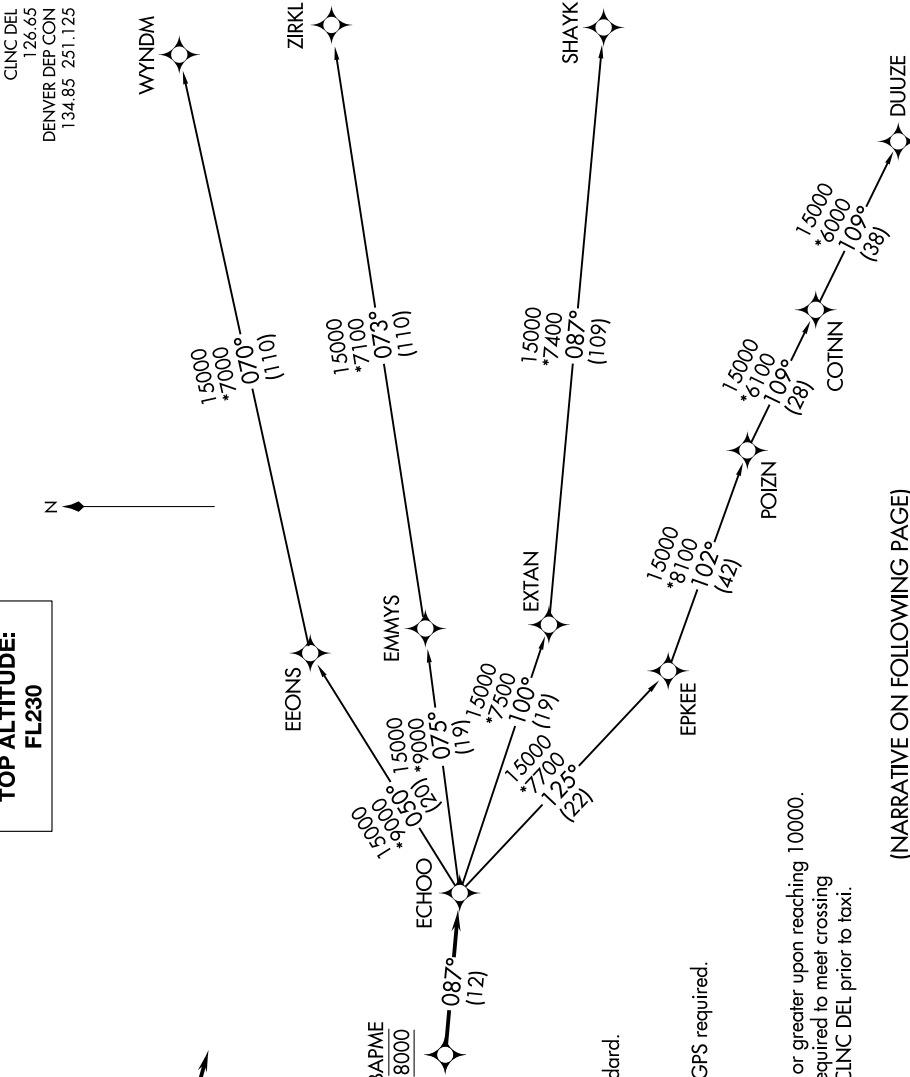
ECHOO ONE DEPARTURE (RNAV)

AL-325 (FAA)

GREELEY-WELD COUNTY (GXY)
GREELEY, COLORADO

SW-1, 16 MAY 2024 to 13 JUN 2024

TOP ALTITUDE:
FL230



TAKEOFF MINIMUMS

Rwys 10, 17, 28, 35: Standard.

NOTE: DME/DME/IRU or GPS required.

NOTE: RNAV 1.

NOTE: Turbojets only.

NOTE: RADAR required.

NOTE: Accelerate to 250K or greater upon reaching 10000.

If slower speed is required to meet crossing restrictions advise CLNC DEL prior to taxi.

NOTE: Chart not to scale.

(NARRATIVE ON FOLLOWING PAGE)

SW-1, 16 MAY 2024 to 13 JUN 2024

ECHOO ONE DEPARTURE (RNAV)