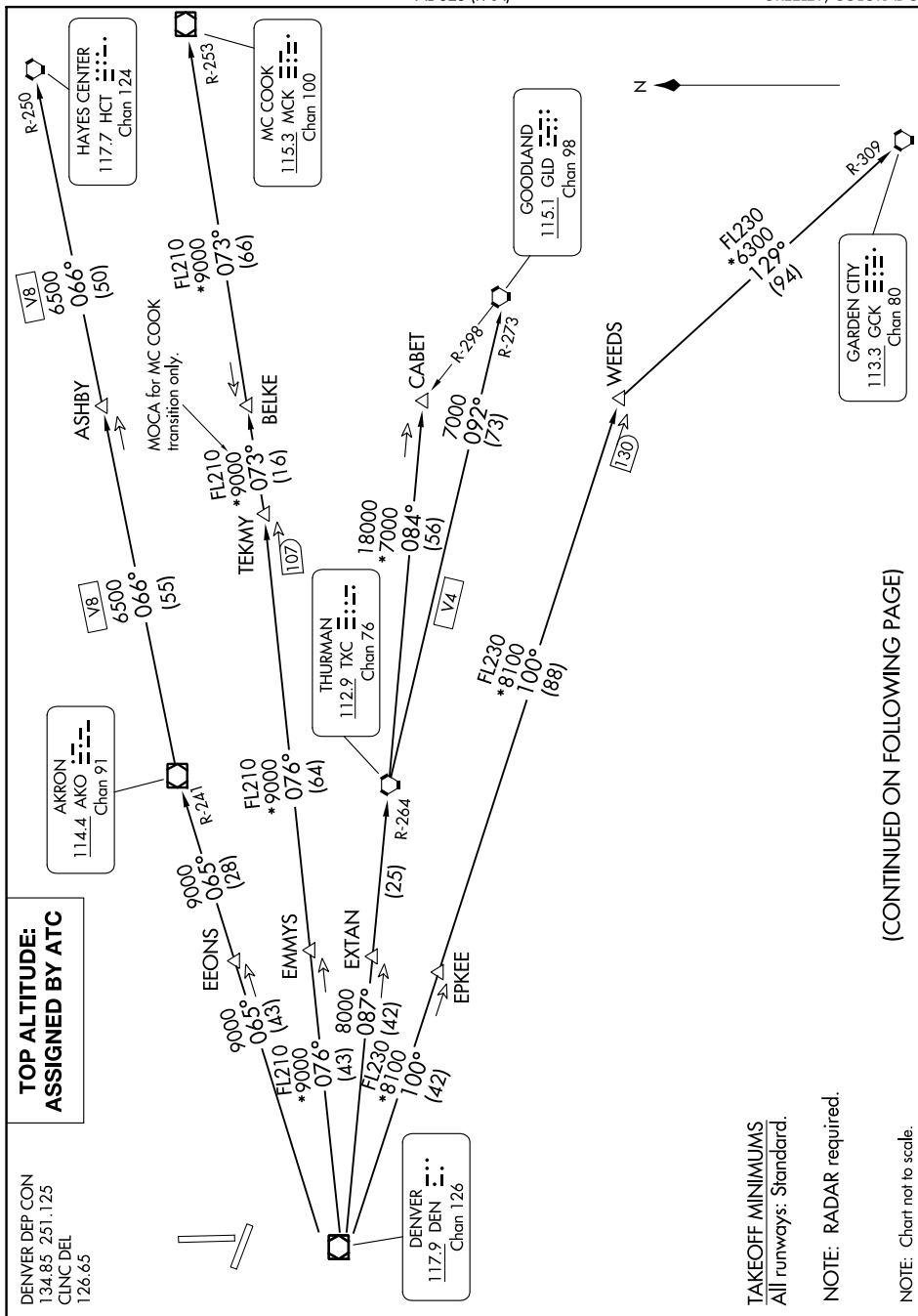


PLAINS ONE DEPARTURE

AL-325 (FAA)

GREELEY-WELD COUNTY (GXY)
GREELEY, COLORADO

SW-1, 16 MAY 2024 to 13 JUN 2024



(CONTINUED ON FOLLOWING PAGE)

SW-1, 16 MAY 2024 to 13 JUN 2024

PLAINS ONE DEPARTURE

GREELEY, COLORADO
GREELEY-WELD COUNTY (GXY)