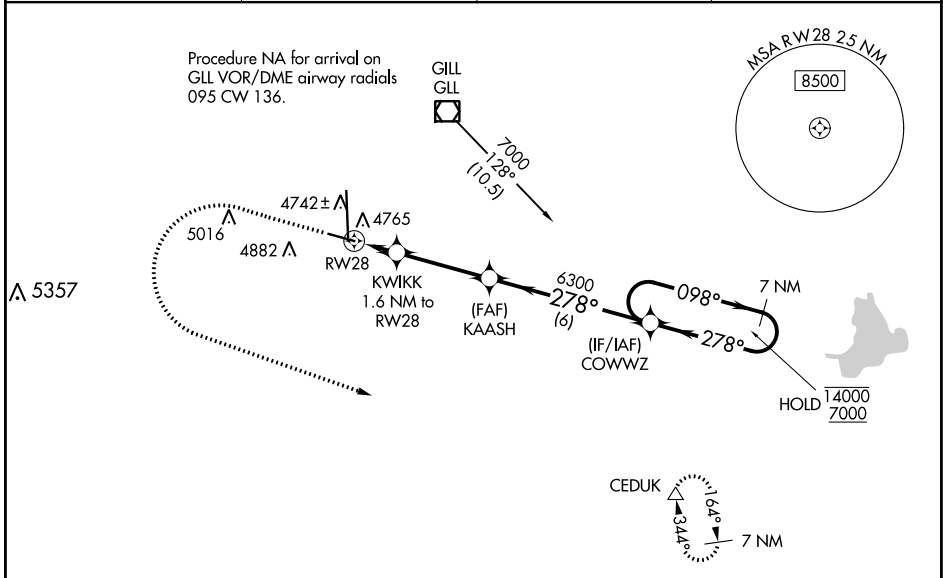


WAAS CH <b>86808</b> <b>W28A</b>	APP CRS <b>278°</b>	Rwy Idg TDZE Apt Elev	<b>5801</b> <b>4650</b> <b>4697</b>
----------------------------------------	------------------------	-----------------------------	-------------------------------------------

# RNAV (GPS) RWY 28

GREELEY-WELD COUNTY (GXY)

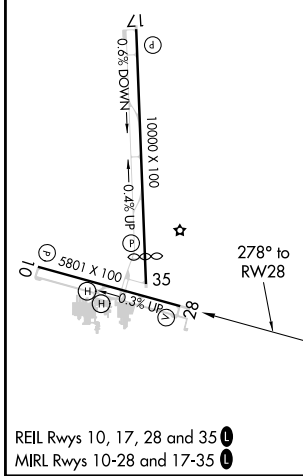
RNP APCH.		MISSED APPROACH: Climb to 6300 then climbing left turn to 7000 direct CEDUK and hold.	
AWOS-3PT <b>135.175</b>	DENVER APP CON <b>134.85 251.125</b>	CLNC DEL <b>126.65</b>	UNICOM <b>122.8</b> (CTAF) <b>0</b>



SW-1, 16 MAY 2024 to 13 JUN 2024

SW-1, 16 MAY 2024 to 13 JUN 2024

ELEV 4697	TDZE 4650
-----------	-----------



6300	7000	CEDUK	VGSI and RNAV glidepath not coincident (VGSI angle 3.00/TCH 27).	7 NM Holding Pattern
*LNAV only	*KWIKK 1.6 NM to RW28	KAASH	6300	COWWZ
RW28	5200	6300	278°	098° → 14000 ← 278° 7000
1.6 NM	3.5 NM	6 NM		GP 3.00° TCH 50
CATEGORY	A	B	C	D
LPV DA	4850- <sup>3</sup> / <sub>4</sub> 200 (200- <sup>3</sup> / <sub>4</sub> )			
LNAV/VNAV DA	4976-1 326 (300-1)			
LNAV MDA	5080-1	430 (400-1)	5080-1 <sup>1</sup> / <sub>4</sub>	430 (400-1 <sup>1</sup> / <sub>4</sub> )
<b>C</b> CIRCLING	5120-1 423 (500-1)	5200-1 503 (600-1)	5200-1 <sup>1</sup> / <sub>2</sub> 503 (600-1 <sup>1</sup> / <sub>2</sub> )	5380-2 <sup>1</sup> / <sub>4</sub> 683 (700-2 <sup>1</sup> / <sub>4</sub> )