

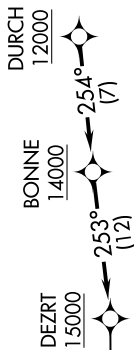
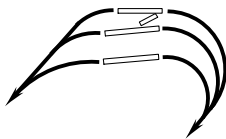
SW-4, 16 MAY 2024 to 13 JUN 2024

TOP ALTITUDE:
15000

RNAV 1 - DME/DME/IRU or GPS.
RADAR required.

- D-ATIS 124.75 125.625
- CINC DEL 127.3 379.975
- CPDIC
- GND CON 121.9 348.6 (Rwys 14-32, 17-35)
- 123.775 348.6 (Rwys 16L-34R, 16R-34L)
- SALT LAKE CITY TOWER 119.05 257.8 (Rwy 16L-34R)
- 118.3 257.8 (Rwy 14-32, 17-35)
- 132.65 336.4 (Rwy 16R-34L)
- SALT LAKE CITY DEP CON 126.25 333.825

NOTE: Turbojet aircraft only.



TAKEOFF MINIMUMS

Rwys 14, 32: NA-ATC.

Rwy 16L: Standard with minimum climb of 470' per NM to 9900.

Rwy 16R: Standard with minimum climb of 500' per NM to 9700.

Rwy 17: Standard with minimum climb of 425' per NM to 9400.

Rwy 34L: Standard with minimum climb of 250' per NM to 7500.

Rwy 34R: Standard with minimum climb of 235' per NM to 7500.

Rwy 35: Standard with minimum climb of 220' per NM to 7500.

NOTE: Chart not to scale.

DEPARTURE ROUTE DESCRIPTION

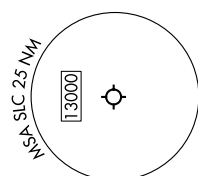
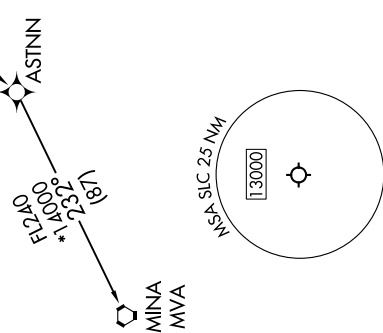
TAKEOFF RUNWAYS 16L/R, 17: Climbing right turn on a heading between 280° CW 340° from DER as assigned by ATC, thence

TAKEOFF RUNWAYS 34L/R, 35: Climbing left turn on a heading between 260° CW 320° from DER as assigned by ATC, thence

. . . . on RADAR vectors to cross DURCH at or above 12000, then on track 254° to cross BONNE at or above 14000, then on track 253° to cross DEZRT at or above 15000, then on (transition). Maintain 15000. Expect filed altitude 10 minutes after departure.

BATTLE MOUNTAIN TRANSITION (DEZRT2.BAM)

MINA TRANSITION (DEZRT2.MVA)



SW-4, 16 MAY 2024 to 13 JUN 2024